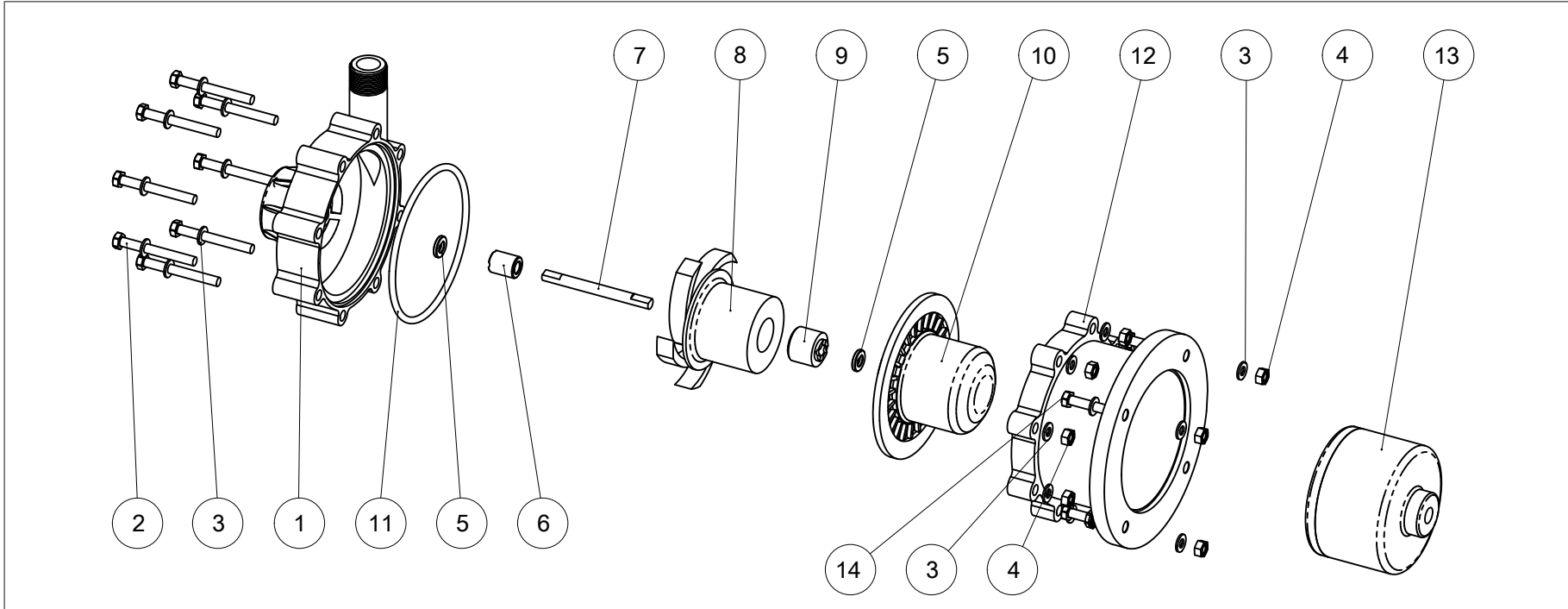


# EXPLODED VIEW

CODE: E 10283 Rev.:01



ITEM: Pump model: CM MAG-P4 PP

# PART LIST

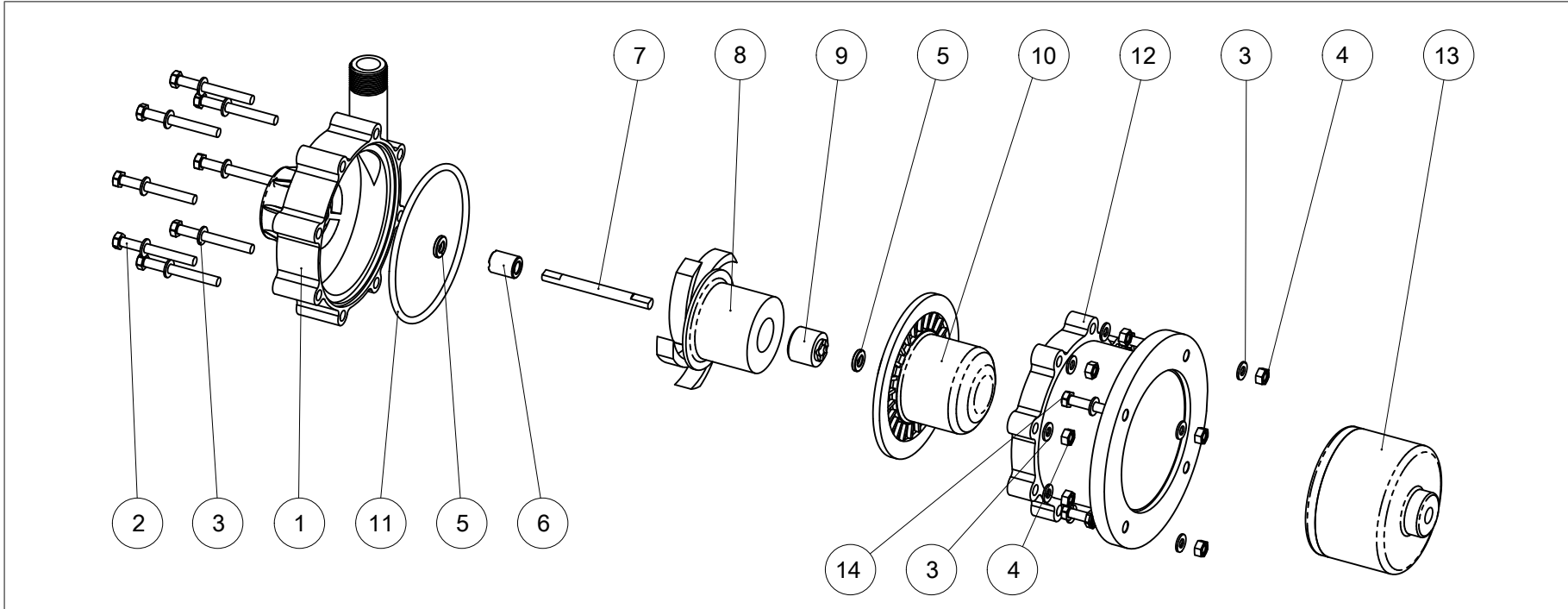
Motor: IEC Gr56 B3/B5  
 Port connection: Threaded  
 BSP-F UNI ISO 228/1 | NPT-F USAS B2-1/1968

ITEM N°	META CODE	Description	Material	Q.ty	ITEM N°	META CODE	Description	Material	Q.ty
1	56220CP004PG	Pump Casing BSP	PP	1	14	91610TE525A2	Screw UNI24017 M5x25	A2-70	4
	56220CP004PN	Pump Casing NPT							
2	91610TE550A2	Screw UNI24014 M5x50	A2-70	8					
3	91630N0510A2	Washer UNI6592 D.5x10	A2-70	24					
4	91620N05A2	Nut UNI5588 M5	A2-70	12					
5	92210ACM004	Ring	Al203	1					
6	90310C12115	Front Bushing	PTFEC	1					
7	90010CP004A	Shaft	Al203	1					
8	50160CM004P	Rotor (Impeller+Internal magnet)	PP / NdFeB	1					
9	90310C19117	Rear Bushing	PTFEC	1					
10	55610CP004P	Rear Casing	PP	1					
11	92910E8214	O-Ring 4325/BS236	EPDM	1					
12	56120CP0042P	Bracket	PP	1					
13	55810CP00402N	External Magnet	A105 / NdFeB	1					

- This drawing is for reference only

# EXPLODED VIEW

CODE: E 10284 Rev.:01



ITEM: Pump model: CM MAG-P4 PVDF

# PART LIST

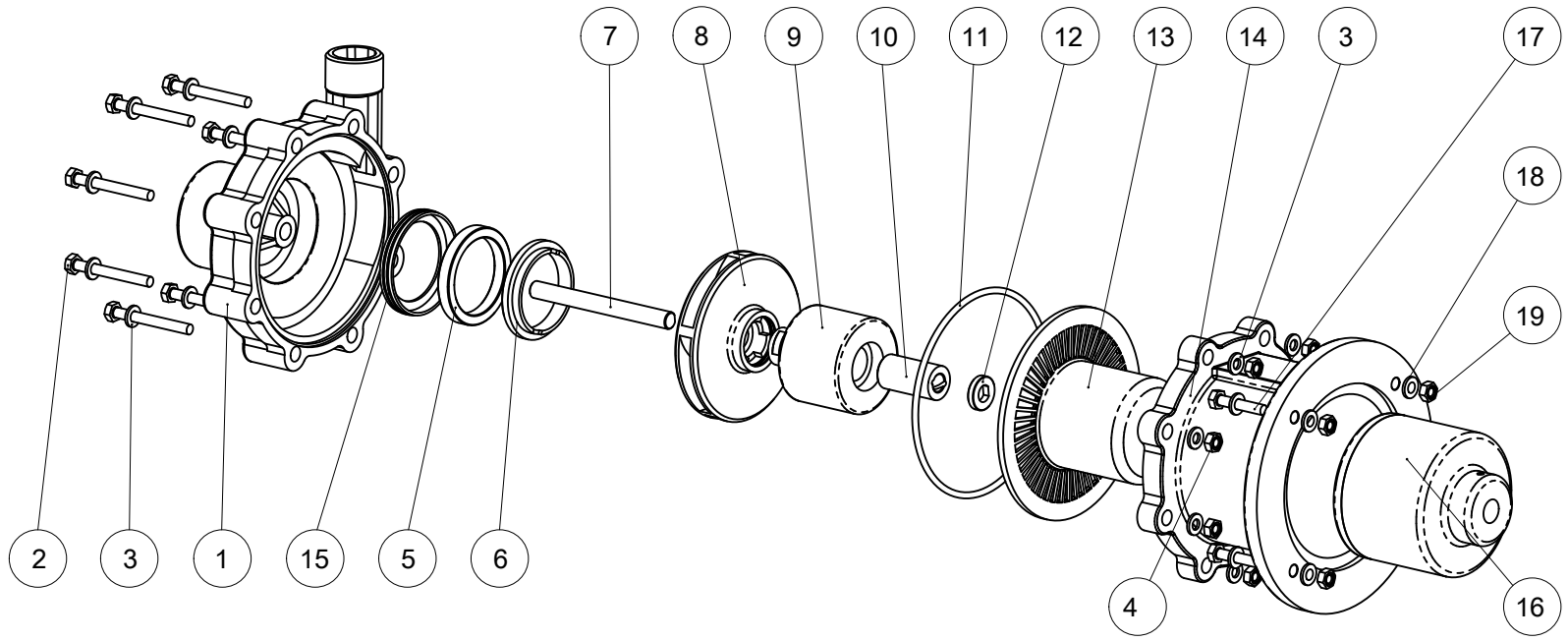
Motor: IEC Gr56 B3/B5  
 Port connection: Threaded  
 BSP-F UNI ISO 228/1 | NPT-F USAS B2-1/1968

ITEM N°	META CODE	Description	Material	Q.ty	ITEM N°	META CODE	Description	Material	Q.ty
1	56220CP004VG	Pump Casing BSP	PVDF	1	14	91610TE525A2	Screw UNI24017 M5x25	A2-70	4
	56220CP004VN	Pump Casing NPT							
2	91610TE550A2	Screw UNI24014 M5x50	A2-70	8					
3	91630N0510A2	Washer UNI6592 D.5x10	A2-70	24					
4	91620N05A2	Nut UNI5588 M5	A2-70	12					
5	92210ACM004	Ring	Al203	1					
6	90310C12115	Front Bushing	PTFEC	1					
7	90010CP004A	Shaft	Al203	1					
8	50160CM004V	Rotor (Impeller+Internal magnet)	PVDF / NdFeB	1					
9	90310C19117	Rear Bushing	PTFEC	1					
10	55610CP004V	Rear Casing	PVDF	1					
11	92910V8214	O-Ring 4325/BS236	VITON	1					
12	56120CP0042P	Bracket	PP	1					
13	55810CP00402N	External Magnet	A105 / NdFeB	1					

- This drawing is for reference only

# EXPLODED VIEW

CODE: E 10057 Rev.:01



ITEM: Pump model: CM MAG-P6 PP

# PART LIST

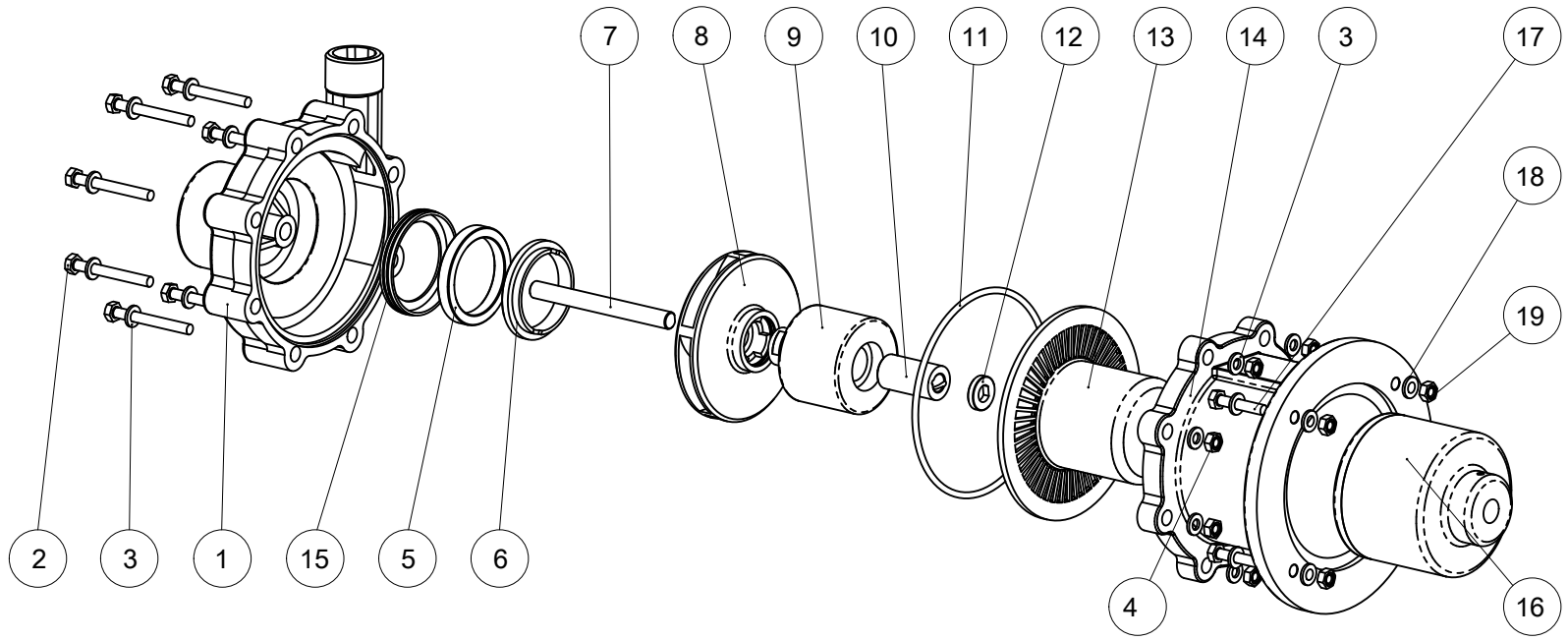
Motor: IEC Gr63 B3/B5  
 Port connection: Threaded  
 BSP-F UNI ISO 228/1 | NPT-F USAS B2-1/1968

ITEM N°	META CODE	Description	Material	Q.ty	ITEM N°	META CODE	Description	Material	Q.ty
1	56220CP006PG	Pump Casing BSP	PP	1	14	56120CP00604P	Bracket	PP	1
	56220CP006PN	Pump Casing NPT			15	90910E046	Glove	EPDM	1
2	91610TE550A2	Screw UNI24014 M5x50	A2-70	8	16	55810CP00604N	External Magnet	A105 / NdFeB	1
3	91630N0510A2	Washer UNI6592 D.5x10	A2-70	16	17	91610TE630A2	Screw UNI24017 M6x30	A2-70	4
4	91620N05A2	Nut UNI5588 M5	A2-70	8	18	91630N0612A2	Washer UNI6592 D.6x12	A2-70	8
5	90140A4636	Pump Casing thrustbearing	Al203	1	19	91620N06A2	Nut UNI5588 M6	A2-70	4
6	90140C00475P	Impeller thrustbearing	PTFEC	1					
7	90010CP006A	Shaft	Al203	1					
8	55710CP006P	Impeller	PP	1					
9	55820CP006NP	Internal magnet	PP/NdFeB	1					
10	90310C20305	Bushing	PTFEC	1					
11	92910E1107	O-Ring 4437/BS245	EPDM	1					
12	92210ACM006	Ring	Al203	1					
13	55610CP006P	Rear Casing	PP	1					

- This drawing is for reference only

# EXPLODED VIEW

CODE: E 10058 Rev.:01



ITEM: Pump model: CM MAG-P6 PVDF

# PART LIST

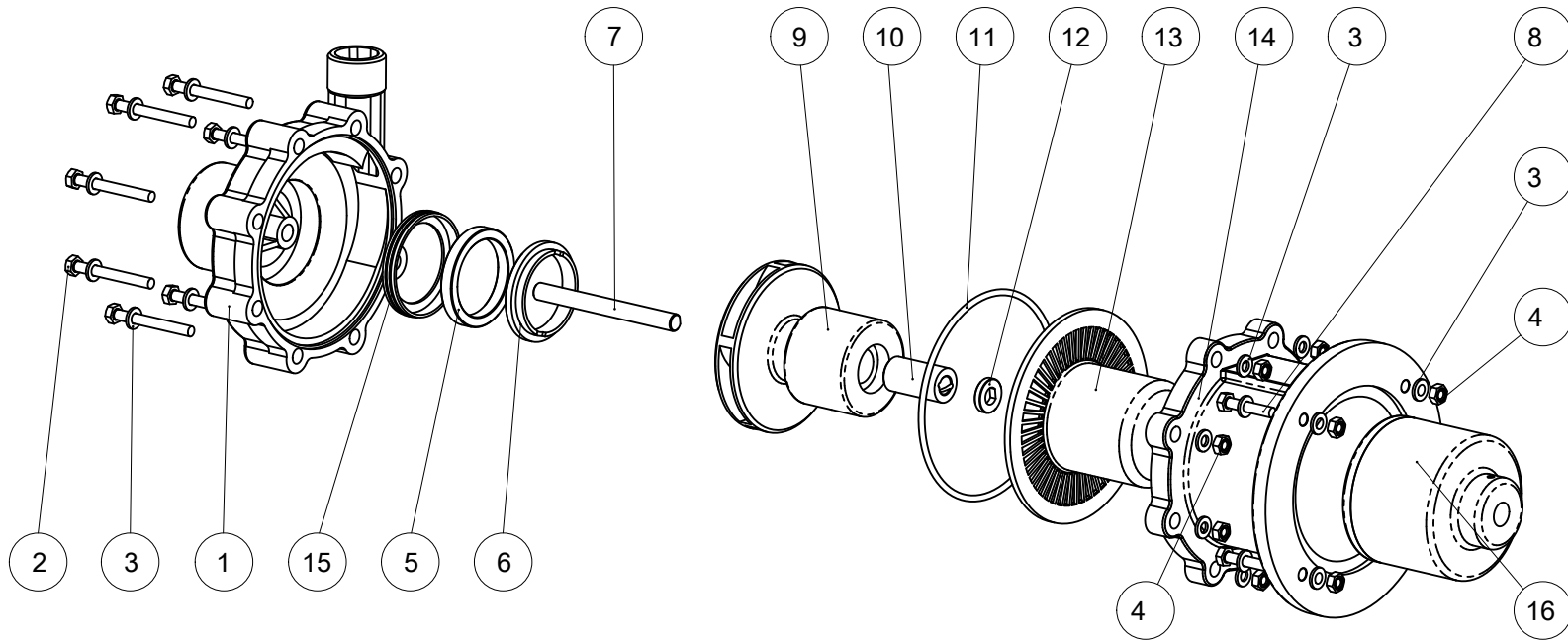
Motor: IEC Gr63 B3/B5  
 Port connection: Threaded  
 BSP-F UNI ISO 228/1 | NPT-F USAS B2-1/1968

ITEM N°	META CODE	Description	Material	Q.ty	ITEM N°	META CODE	Description	Material	Q.ty
1	56220CP006VG	Pump Casing BSP	PVDF	1	14	56120CP00604P	Bracket	PP	1
	56220CP006VN	Pump Casing NPT			15	90910V046	Glove	VITON	1
2	91610TE550A2	Screw UNI24014 M5x50	A2-70	8	16	55810CP00604N	External Magnet	A105 / NdFeB	1
3	91630N0510A2	Washer UNI6592 D.5x10	A2-70	16	17	91610TE630A2	Screw UNI24017 M6x30	A2-70	4
4	91620N05A2	Nut UNI5588 M5	A2-70	8	18	91630N0612A2	Washer UNI6592 D.6x12	A2-70	8
5	90140A4636	Pump Casing thrustbearing	Al203	1	19	91620N06A2	Nut UNI5588 M6	A2-70	4
6	90140C00475P	Impeller thrustbearing	PTFEC	1					
7	90010CP006A	Shaft	Al203	1					
8	55710CP006V	Impeller	PVDF	1					
9	55820CP006NP	Internal magnet	PVDF/NdFeB	1					
10	90310C20305	Bushing	PTFEC	1					
11	92910V1107	O-Ring 4437/BS245	VITON	1					
12	92210ACM006	Ring	Al203	1					
13	55610CP006V	Rear Casing	PVDF	1					

- This drawing is for reference only

# EXPLODED VIEW

CODE: E 10060 Rev.:01



ITEM: Pump model: CM MAG-P10 PP

# PART LIST

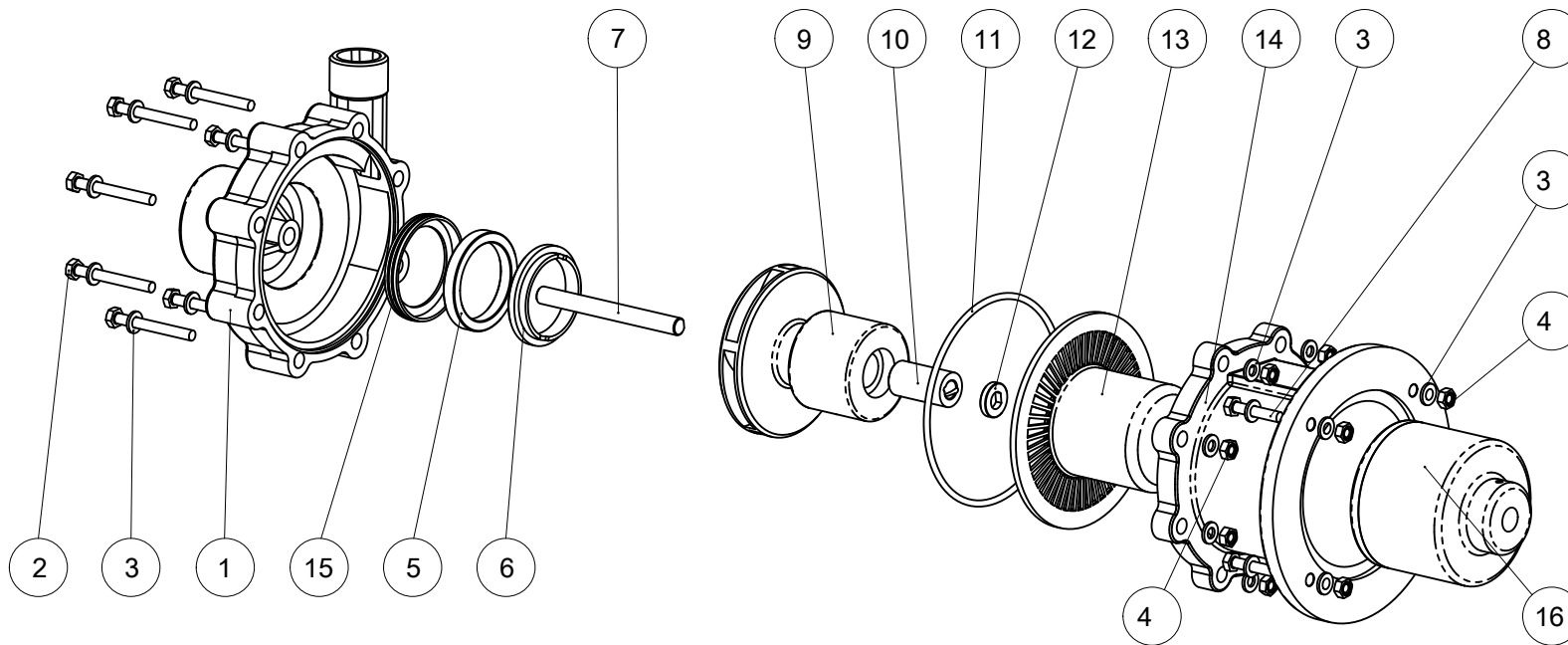
Motor: IEC Gr71 B3/B5  
 Port connection: Threaded  
 BSP-F UNI ISO 228/1 | NPT-F USAS B2-1/1968

ITEM N°	META CODE	Description	Material	Q.ty	ITEM N°	META CODE	Description	Material	Q.ty
1	56220CP010PG	Pump Casing BSP	PP	1	14	56120CP01006P	Bracket	PP	1
	56220CP010PN	Pump Casing NPT			15	90910E058	Glove	EPDM	1
2	91610TE660A2	Screw UNI24014 M6x60	A2-70	8	16	55810CP01006N	External Magnet	A105 / NdFeB	1
3	91630N0612A2	Washer UNI6592 D.6x12	A2-70	24					
4	91620N06A2	Nut UNI5588 M6	A2-70	12					
5	90140A575455	Pump Casing thrustbearing	Al203	1					
6	90140C00058VN	Impeller thrustbearing	PTFEC	1					
7	90010CP010A	Shaft	Al203	1					
8	91610TE630A2	Screw UNI24017 M6x30	A2-70	4					
9	50160CM010P	Rotor (Impeller+Internal magnet)	PP/NdFeB	1					
10	90310C2015385	Bushing	PTFEC	1					
11	92910E1139	O-Ring 4450/BS246	EPDM	1					
12	92210ACM006	Ring	Al203	1					
13	55610CP010P	Rear Casing	PP	1					

- This drawing is for reference only

# EXPLODED VIEW

CODE: E 10059 Rev.:01



ITEM: Pump model: CM MAG-P10 PVDF

# PART LIST

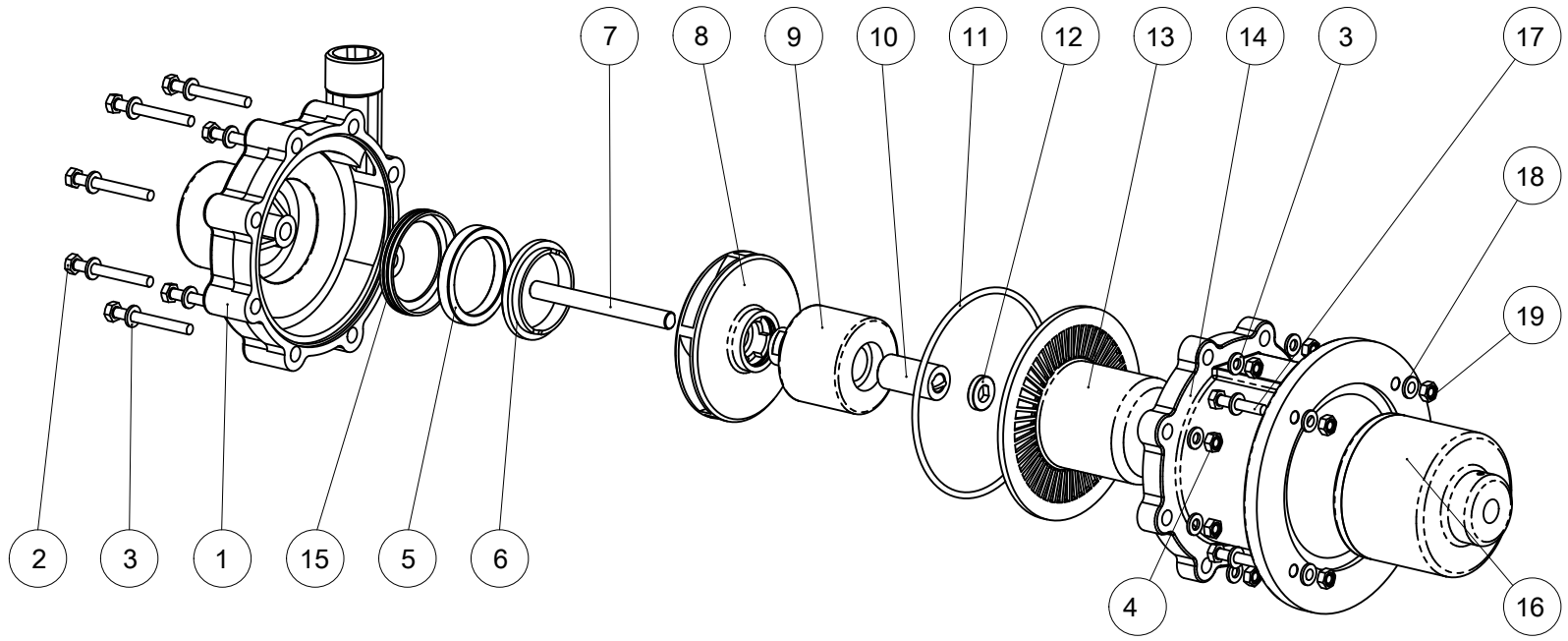
Motor: IEC Gr71 B3/B5  
 Port connection: Threaded  
 BSP-F UNI ISO 228/1 | NPT-F USAS B2-1/1968

ITEM N°	META CODE	Description	Material	Q.ty	ITEM N°	META CODE	Description	Material	Q.ty
1	56220CP010VG	Pump Casing BSP	PVDF	1	14	56120CP01006P	Bracket	PP	1
	56220CP010VN	Pump Casing NPT			15	90910V058	Glove	VITON	1
2	91610TE660A2	Screw UNI24014 M6x60	A2-70	8	16	55810CP01006N	External Magnet	A105 / NdFeB	1
3	91630N0612A2	Washer UNI6592 D.6x12	A2-70	24					
4	91620N06A2	Nut UNI5588 M6	A2-70	12					
5	90140A575455	Pump Casing thrustbearing	Al203	1					
6	90140C00058VN	Impeller thrustbearing	PTFEC	1					
7	90010CP010A	Shaft	Al203	1					
8	91610TE630A2	Screw UNI24017 M6x30	A2-70	4					
9	50160CM010V	Rotor (Impeller+Internal magnet)	PVDF/NdFeB	1					
10	90310C2015385	Bushing	PTFEC	1					
11	92910V1139	O-Ring 4450/BS246	VITON	1					
12	92210ACM006	Ring	Al203	1					
13	55610CP010V	Rear Casing	PVDF	1					

- This drawing is for reference only

# EXPLODED VIEW

CODE: E 10061 Rev.:01



ITEM: Pump model: CM MAG-P15 PP

# PART LIST

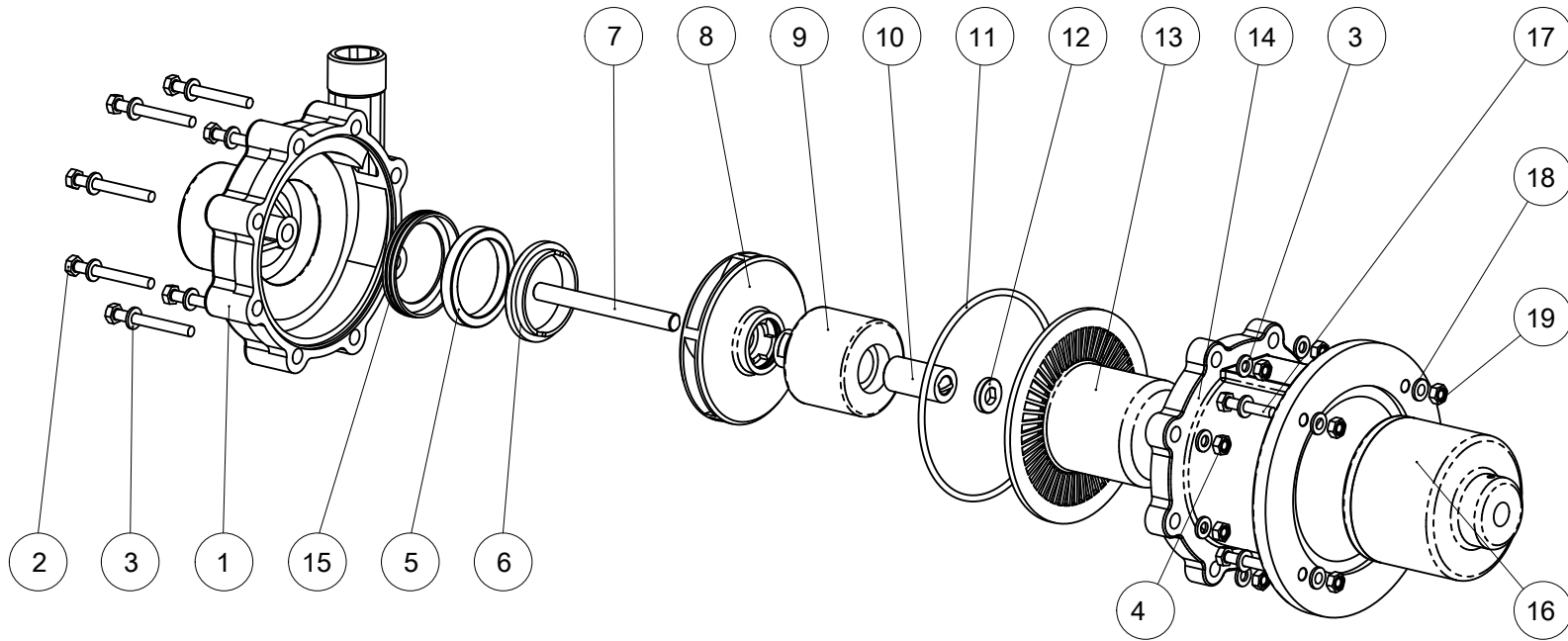
Motor: IEC Gr80 B3/B5  
 Port connection: Threaded  
 BSP-F UNI ISO 228/1 | NPT-F USAS B2-1/1968

ITEM N°	META CODE	Description	Material	Q.ty	ITEM N°	META CODE	Description	Material	Q.ty
1	56220CP015PG	Pump Casing BSP	PP	1	14	56120CP01508P	Bracket	PP	1
	56220CP015PN	Pump Casing NPT			15	90910E064	Glove	EPDM	1
2	91610TE665A2	Screw UNI24014 M6x65	A2-70	8	16	55810CP01508N	External Magnet	A105 / NdFeB	1
3	91630N0612A2	Washer UNI6592 D.6x12	A2-70	16	17	91610TE835A2	Screw UNI24017 M8x35	A2-70	4
4	91620N06A2	Nut UNI5588 M6	A2-70	8	18	91630N0816A2	Washer UNI6592 D.8x16	A2-70	8
5	90140A64458	Pump Casing thrustbearing	Al203	1	19	91620N08A2	Nut UNI5588 M8	A2-70	4
6	90140C00064P	Impeller thrustbearing	PTFEC	1					
7	90010CP015A	Shaft	Al203	1					
8	55710CP015P	Impeller	PP	1					
9	55820CP015NP	Internal magnet	PP/NdFeB	1					
10	90310C2415535	Bushing	PTFEC	1					
11	92910E1518	O-Ring 6600/BS361	EPDM	1					
12	92210ACM015	Ring	Al203	1					
13	55610CP015P	Rear Casing	PP	1					

- This drawing is for reference only

# EXPLODED VIEW

CODE: E 10062 Rev.:01



ITEM: Pump model: CM MAG-P15 PVDF

# PART LIST

Motor: IEC Gr80 B3/B5  
 Port connection: Threaded  
 BSP-F UNI ISO 228/1 | NPT-F USAS B2-1/1968

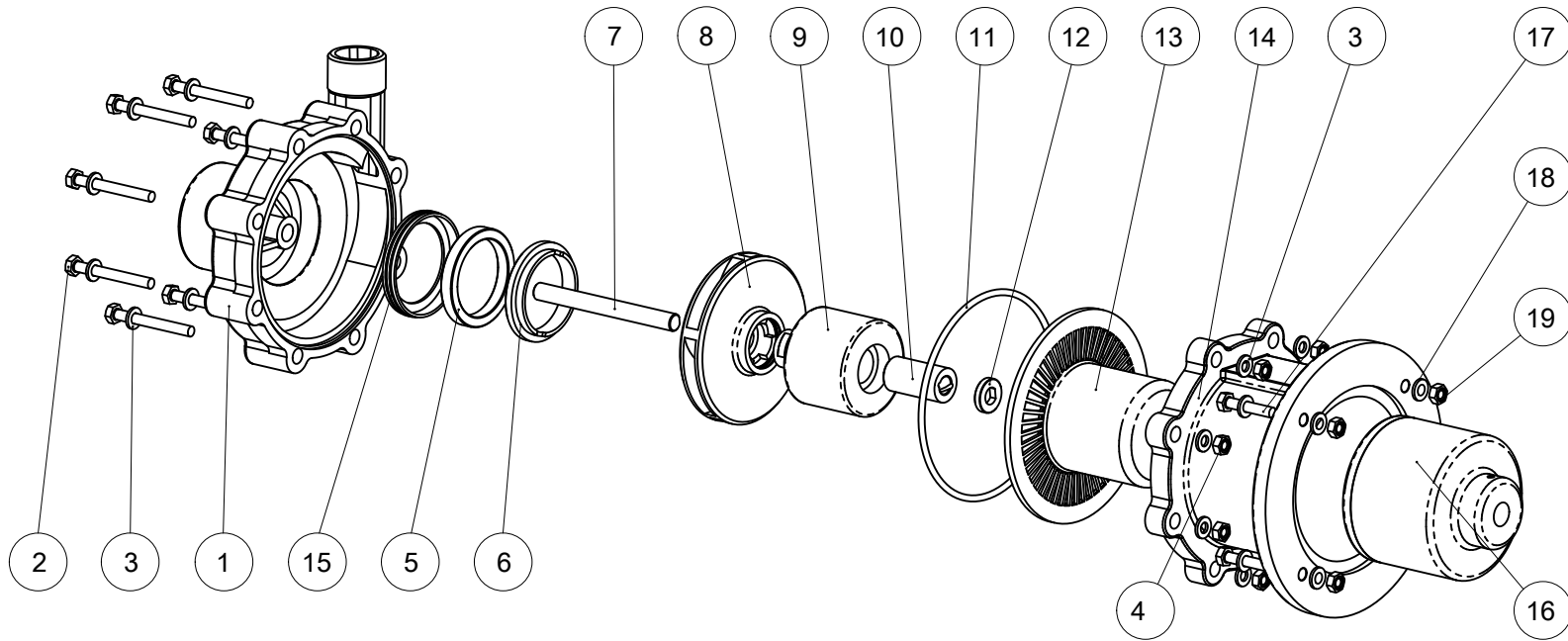
ITEM N°	META CODE	Description	Material	Q.ty	ITEM N°	META CODE	Description	Material	Q.ty
1	56220CP015VG	Pump Casing BSP	PVDF	1	14	56120CP01508P	Bracket	PP	1
	56220CP015VN	Pump Casing NPT			15	90910V064	Glove	VITON	1
2	91610TE665A2	Screw UNI24014 M6x65	A2-70	8	16	55810CP01508N	External Magnet	A105 / NdFeB	1
3	91630N0612A2	Washer UNI6592 D.6x12	A2-70	16	17	91610TE835A2	Screw UNI24017 M8x35	A2-70	4
4	91620N06A2	Nut UNI5588 M6	A2-70	8	18	91630N0816A2	Washer UNI6592 D.8x16	A2-70	8
5	90140A64458	Pump Casing thrustbearing	Al203	1	19	91620N08A2	Nut UNI5588 M8	A2-70	4
6	90140C00064P	Impeller thrustbearing	PTFEC	1					
7	90010CP015A	Shaft	Al203	1					
8	55710CP015V	Impeller	PVDF	1					
9	55820CP015NV	Internal magnet	PVDF/NdFeB	1					
10	90310C2415535	Bushing	PTFEC	1					
11	92910V1518	O-Ring 6600/BS361	VITON	1					
12	92210ACM015	Ring	Al203	1					
13	55610CP015V	Rear Casing	PVDF	1					

- This drawing is for reference only



# EXPLODED VIEW

CODE: E 10292 Rev.:01



ITEM: Pump model: CM MAG-P30 PP

# PART LIST

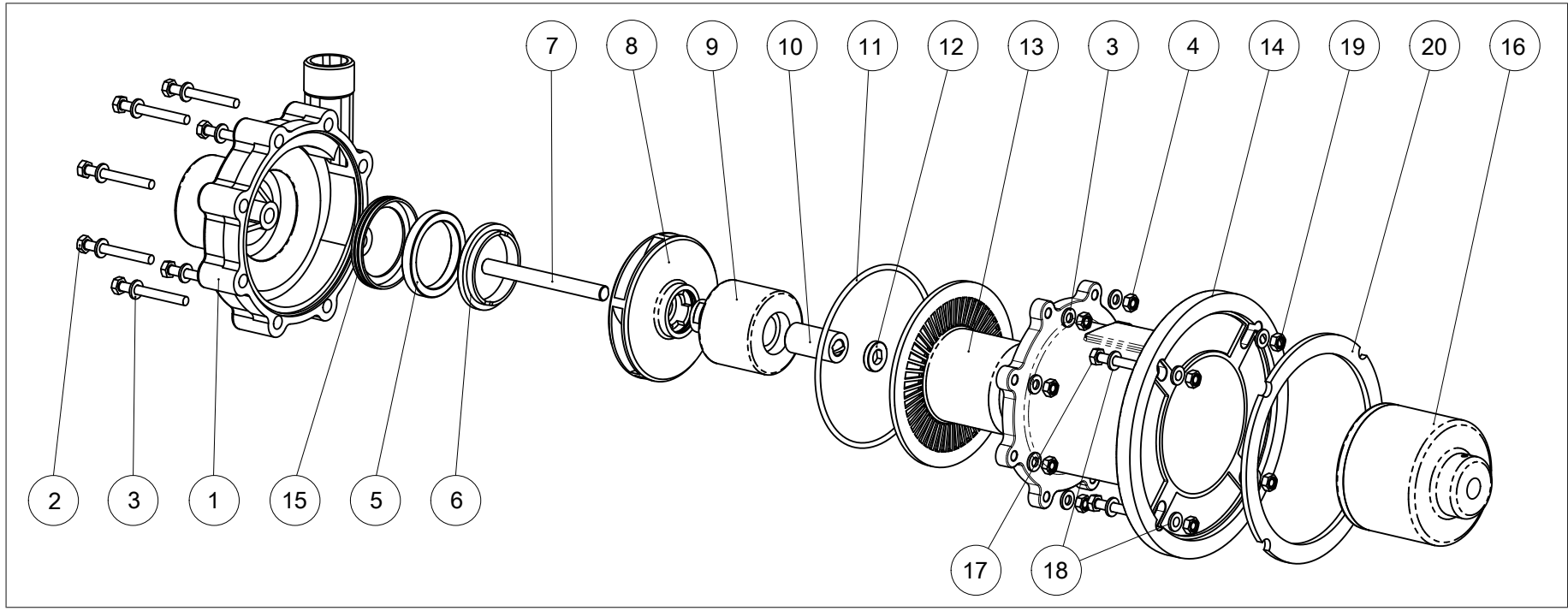
Motor: IEC Gr90 B3/B5  
 Port connection: Threaded  
 BSP-F UNI ISO 228/1 | NPT-F USAS B2-1/1968

ITEM N°	META CODE	Description	Material	Q.ty	ITEM N°	META CODE	Description	Material	Q.ty
1	56220CP030PG	Pump Casing BSP	PP	1	14	96120CP03010	Bracket	PP	1
	56220CP030PN	Pump Casing NPT			15	90910E071	Glove	EPDM	1
2	91610TE885A2	Screw UNI24014 M8x85	A2-70	8	16	55810T109210N	External Magnet	A105 / NdFeB	1
3	91630N0816A2	Washer UNI6592 D.8x16	A2-70	16	17	91610TE1040A2	Screw UNI24017 M10x40	A2-70	4
4	91620N08A2	Nut UNI5588 M8	A2-70	8	18	91630N1021A2	Washer UNI6592 D.10x20	A2-70	8
5	90140A07162	Pump Casing thrustbearing	Al203	1	19	91620N10A2	Nut UNI5588 M10	A2-70	4
6	90140C00070P	Impeller thrustbearing	PTFEC	1					
7	90010CP030A	Shaft	Al203	1					
8	55710CP030P	Impeller	PP	1					
9	55820CP030NP	Internal magnet	PP/NdFeB	1					
10	90310C271563	Bushing	PTFEC	1					
11	92910E15812	O-Ring 66257/BS362	EPDM	1					
12	92210ACM030	Ring	Al203	1					
13	55610CP030P	Rear Casing	PP	1					

- This drawing is for reference only

# EXPLODED VIEW

CODE: E 10385 Rev.:01



ITEM: Pump model: CM MAG-P30 PP

# PART LIST

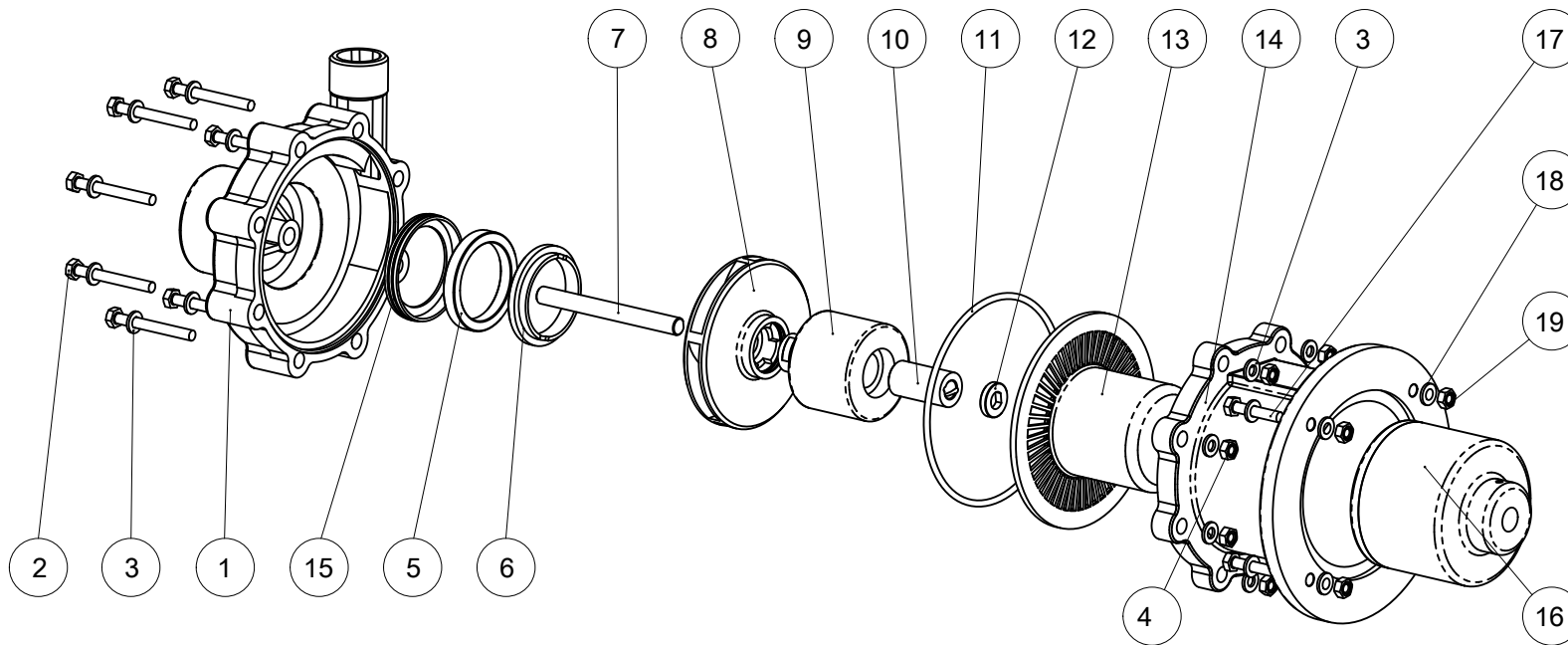
ITEM N°	META CODE	Description	Material	Q.ty	ITEM N°	META CODE	Description	Material	Q.ty
1	56220CP030PG	Pump Casing BSP	PP	1	14	96120CP03040	Bracket	PP	1
	56220CP030PN	Pump Casing NPT			15	90910E071	Glove	EPDM	1
2	91610TE885A2	Screw UNI24014 M8x85	A2-70	8	16	55810T109212N	External Magnet	A105 / NdFeB	1
3	91630N0816A2	Washer UNI6592 D.8x16	A2-70	16	17	91610TE1040A2	Screw UNI24017 M10x40	A2-70	4
4	91620N08A2	Nut UNI5588 M8	A2-70	8	18	91630N1021A2	Washer UNI6592 D.10x20	A2-70	8
5	90140A07162	Pump Casing thrustbearing	Al203	1	19	91620N10A2	Nut UNI5588 M10	A2-70	4
6	90140C00070P	Impeller thrustbearing	PTFEC	1	20	913103607	Adaptor flange	Aluminium	1
7	90010CP030A	Shaft	Al203	1					
8	55710CP030P	Impeller	PP	1					
9	55820CP030NP	Internal magnet	PP/NdFeB	1					
10	90310C271563	Bushing	PTFEC	1					
11	92910E15812	O-Ring 66257/BS362	EPDM	1					
12	92210ACM030	Ring	Al203	1					
13	55610CP030P	Rear Casing	PP	1					

Motor: IEC Gr100/112 B3/B5  
 Port connection: Threaded  
 BSP-F UNI ISO 228/1 | NPT-F USAS B2-1/1968

- This drawing is for reference only

# EXPLODED VIEW

CODE: E 10293 Rev.:01



ITEM: Pump model: CM MAG-P30 PVDF

# PART LIST

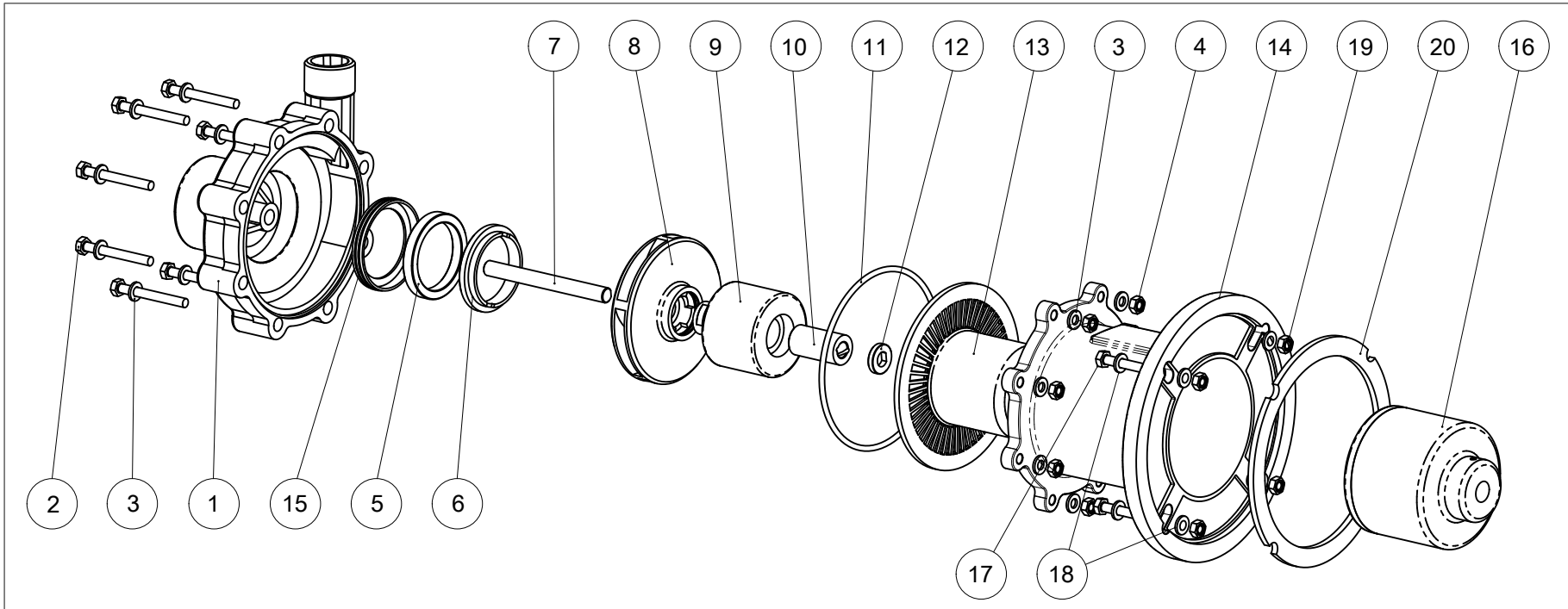
Motor: IEC Gr90 B3/B5  
 Port connection: Threaded  
 BSP-F UNI ISO 228/1 | NPT-F USAS B2-1/1968

ITEM N°	META CODE	Description	Material	Q.ty	ITEM N°	META CODE	Description	Material	Q.ty
1	56220CP030VG	Pump Casing BSP	PVDF	1	14	96120CP03010	Bracket	PP	1
	56220CP030VN	Pump Casing NPT			15	90910V071	Glove	VITON	1
2	91610TE885A2	Screw UNI24014 M8x85	A2-70	8	16	55810T109210N	External Magnet	A105 / NdFeB	1
3	91630N0816A2	Washer UNI6592 D.8x16	A2-70	16	17	91610TE1040A2	Screw UNI24017 M10x40	A2-70	4
4	91620N08A2	Nut UNI5588 M8	A2-70	8	18	91630N1021A2	Washer UNI6592 D.10x20	A2-70	8
5	90140A07162	Pump Casing thrustbearing	Al203	1	19	91620N10A2	Nut UNI5588 M10	A2-70	4
6	90140C00070P	Impeller thrustbearing	PTFEC	1					
7	90010CP030A	Shaft	Al203	1					
8	55710CP030V	Impeller	PVDF	1					
9	55820CP030NV	Internal magnet	PVDF/NdFeB	1					
10	90310C271563	Bushing	PTFEC	1					
11	92910V15812	O-Ring 66257/BS362	VITON	1					
12	92210ACM030	Ring	Al203	1					
13	55610CP030V	Rear Casing	PVDF	1					

- This drawing is for reference only

# EXPLODED VIEW

CODE: E 10386 Rev.:01



ITEM: Pump model: CM MAG-P30 PVDF

# PART LIST

Motor: IEC Gr100/112 B3/B5  
 Port connection: Threaded  
 BSP-F UNI ISO 228/1 | NPT-F USAS B2-1/1968

ITEM N°	META CODE	Description	Material	Q.ty	ITEM N°	META CODE	Description	Material	Q.ty
1	56220CP030VG	Pump Casing BSP	PVDF	1	14	96120CP03040	Bracket	PP	1
	56220CP030VN	Pump Casing NPT			15	90910V071	Glove	VITON	1
2	91610TE885A2	Screw UNI24014 M8x85	A2-70	8	16	55810T109212N	External Magnet	A105 / NdFeB	1
3	91630N0816A2	Washer UNI6592 D.8x16	A2-70	16	17	91610TE1040A2	Screw UNI24017 M10x40	A2-70	4
4	91620N08A2	Nut UNI5588 M8	A2-70	8	18	91630N1021A2	Washer UNI6592 D.10x20	A2-70	8
5	90140A07162	Pump Casing thrustbearing	Al203	1	19	91620N10A2	Nut UNI5588 M10	A2-70	4
6	90140C00070P	Impeller thrustbearing	PTFEC	1	20	913103607	Adaptor flange	Aluminium	1
7	90010CP030A	Shaft	Al203	1					
8	55710CP030V	Impeller	PVDF	1					
9	55820CP030NV	Internal magnet	PVDF/NdFeB	1					
10	90310C271563	Bushing	PTFEC	1					
11	92910V15812	O-Ring 66257/BS362	VITON	1					
12	92210ACM030	Ring	Al203	1					
13	55610CP030V	Rear Casing	PVDF	1					

- This drawing is for reference only