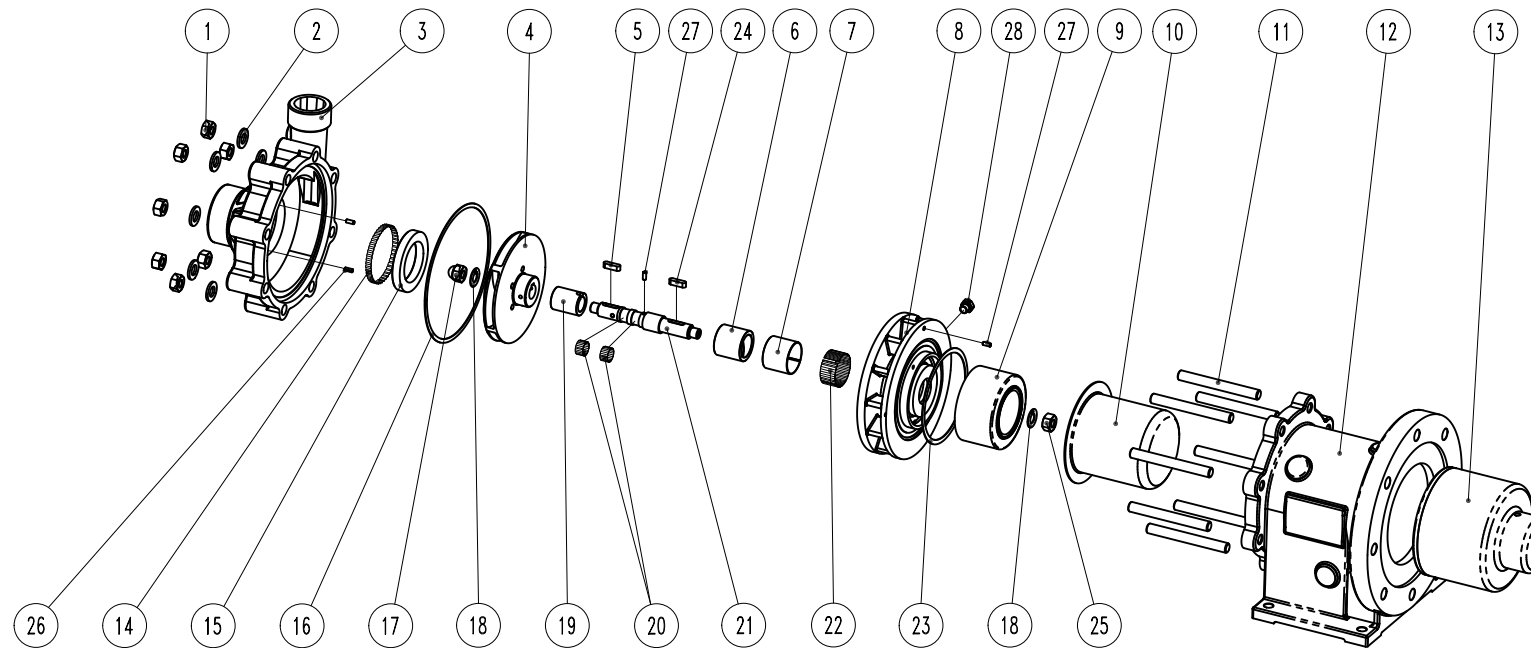


EXPLODED VIEW

CODE: E10281

Rev.:01



ITEM: Pump model: CM MAG-M06

PART LIST

ITEM N°	META CODE	Description	Material	Q.ty	ITEM N°	META CODE	Description	Material	Q.ty
1	91620N06A2	Nut UNI588 M6	A2-70	8	15	90140A52995	Thrustbearing	Carbon Antimony	1
2	91630S0611A2	Washer UNI1751 D.6x11	A2-70	8	16	91510A114510A5	Pump casing gasket	Asbestos free	1
3	96210CM006AG	Pump casing	CF8M	1	17	91620C08A2	Nut UNI5721 M8	A2-70	1
4	55710CM006A	Impeller	CF8M	1	18	91630L0813A4	Washer NORD LOCK D.8x13.5	A4-70	1
5	91640A4412A4	Key UNI6604 4x4x12	A4-70	1	19	902202530S	Sleeve Shaft	SiC	1
6	90310A3330	Bushing	Carbon Antimony	1	20	91710ARSV1210	Shaft tolerance rings	AISI 316	2
7	902103528A	Sleeve Bushing	AISI 316	1	21	55010CM006A	Shaft	AISI 316	1
8	56130CM006A	Shaft support	CF8M	1	22	91710ARHV3714	Bushings tolerance rings	AISI 316	2
9	55820T0001NA	Internal magnet	AISI 316/NdFeB	1	23	91510A805665	Rear casing gasket	Asbestos free	1
10	90810A12508	Rear casing	AISI 316	1	24	91640A3314A4	Key UNI6604 3x3x14	A4-70	1
11	91610P668A2	Stud Bolt M6x68	AISI 420	8	25	91620N08A4	Nut UNI5588 M8	A4-70	1
12	56110CM00606C	Bracket	WCB	1	26	93030D04L08A2	Elastic pin #4x8	A2-70	3
13	55810T000106N	External magnet	ASTM A105/NdFeB	1	27	9316700410A2	Socket screw UNI5927 M4x10	A2-70	1
14	51710ERHV5506	Casing tolerance ring	AISI 304	1	28	9315014MA	Plug 1/4" NPT	AISI 316	1

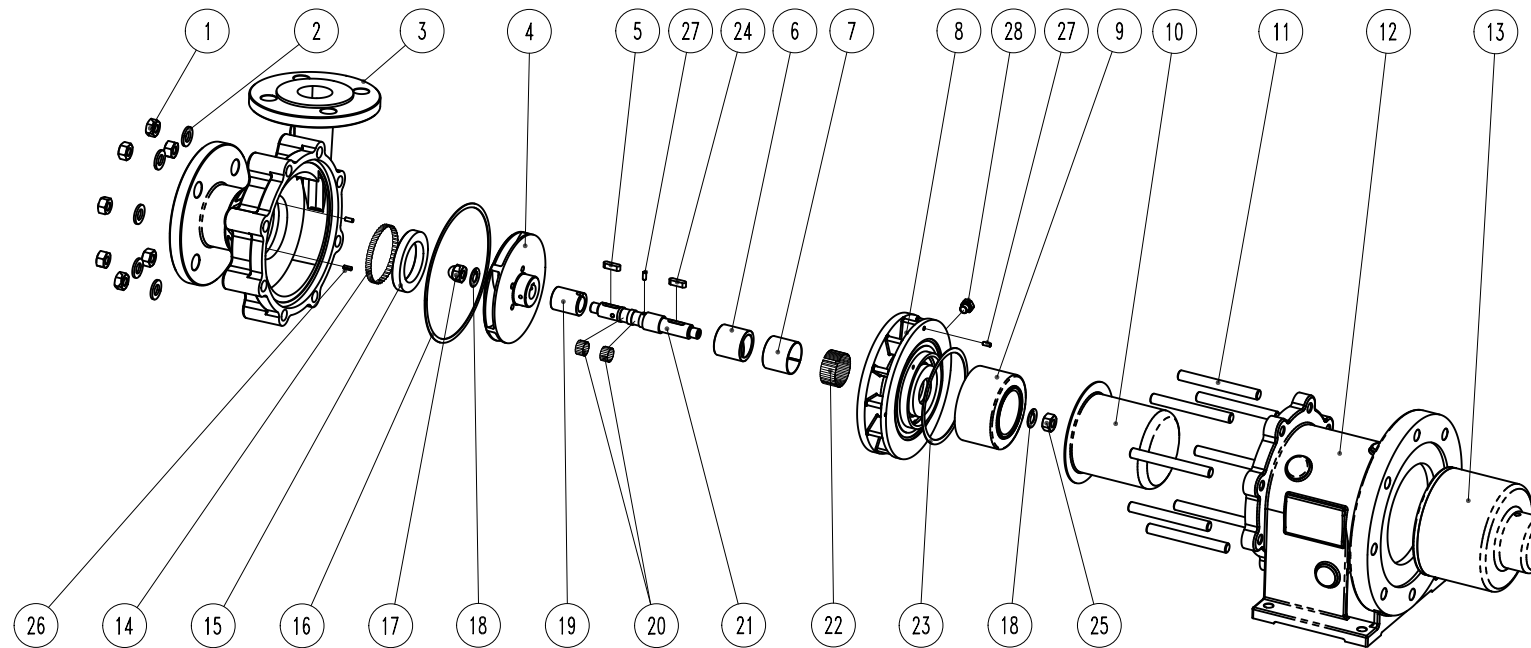
Motor: IEC Gr71 B5
Port connection: Threaded GAS

- This drawing is for reference only

EXPLODED VIEW

CODE: E10282

Rev.:01



ITEM: Pump model: CM MAG-M06

PART LIST

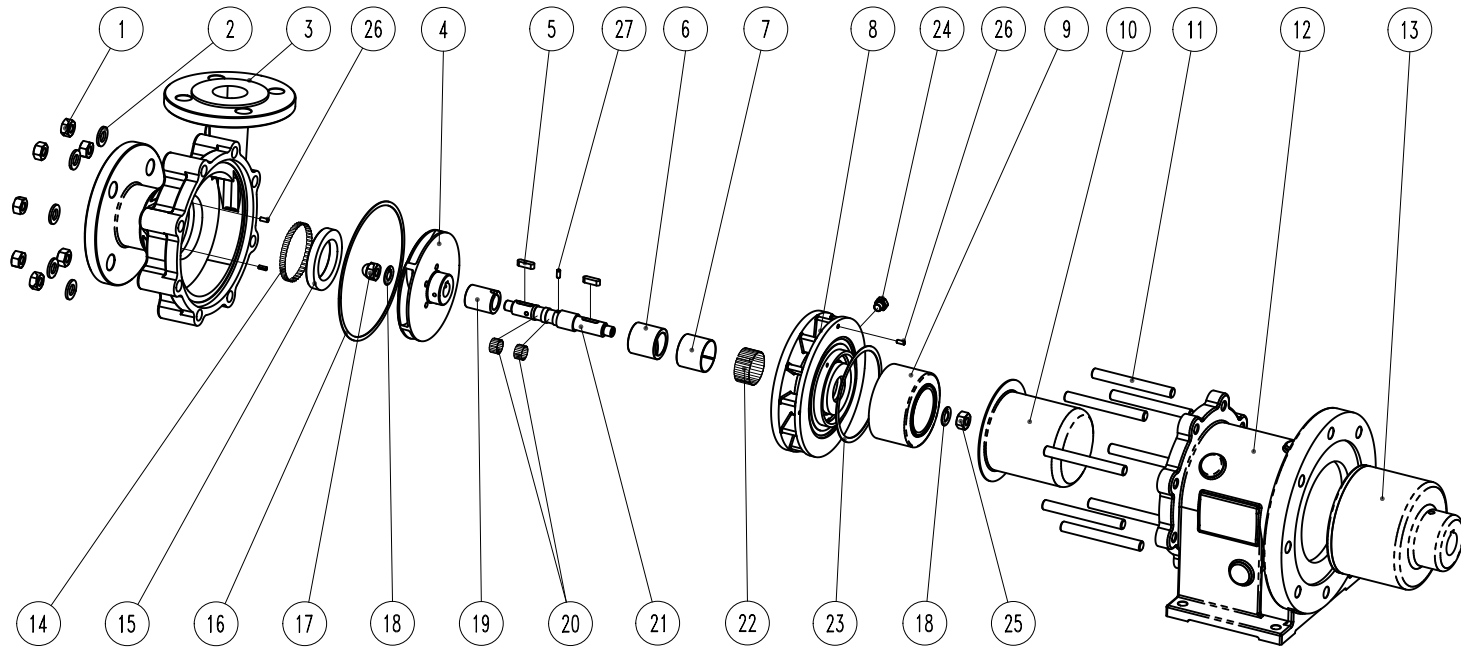
ITEM N°	META CODE	Description	Material	Q.ty	ITEM N°	META CODE	Description	Material	Q.ty
1	91620N06A2	Nut UNI5588 M6	A2-70	8	15	90140A52995	Thrustbearing	Carbon Antimony	1
2	91630S0611A2	Washer UNI1751 D.6x11	A2-70	8	16	91510A11451045	Pump casing gasket	Asbestos free	1
3	96210CM006AU	Pump casing	CF8M	1	17	91620C08A2	Nut UNI5721 M8	A2-70	1
4	55710CM006A	Impeller	CF8M	1	18	91630L0813A4	Washer NORD LOCK D.8x13.5	A4-70	1
5	91640A4412A4	Key UNI6604 4x4x12	A4-70	1	19	902202530S	Sleeve Shaft	SiC	1
6	90310A3330	Bushing	Carbon Antimony	1	20	91710ARSV1210	Shaft tolerance rings	AISI 316	2
7	902103528A	Sleeve Bushing	AISI 316	1	21	55010CM006A	Shaft	AISI 316	1
8	56130CM006A	Shaft support	CF8M	1	22	91710ARHV3714	Bushings tolerance rings	AISI 316	2
9	55820T0001NA	Internal magnet	AISI 316/NdFeB	1	23	91510A805665	Rear casing gasket	Asbestos free	1
10	90810A12508	Rear casing	AISI 316	1	24	91640A3314A4	Key UNI6604 3x3x14	A4-70	1
11	91610P668A2	Stud Bolt M6x68	AISI 420	8	25	91620N08A4	Nut UNI5588 M8	A4-70	1
12	56110CM00606C	Bracket	WCB	1	26	93030D04L08A2	Elastic pin #4x8	A2-70	3
13	55810T000106N	External magnet	ASTM A105/NdFeB	1	27	9316700410A2	Socket screw UNI5927 M4x10	A2-70	1
14	51710ERHV5506	Casing tolerance ring	AISI 304	1	28	9315014MA	Plug 1/4" NPT	AISI 316	1

Motor: IEC Gr71 B5
 Port connection: Flanged
 ANSI (ASA) B16.5 150 lbs / UNI2282-67 PN.16

- This drawing is for reference only

EXPLODED VIEW

CODE: E 10278 Rev.:01



ITEM: Pump model: CM MAG-M1

PART LIST

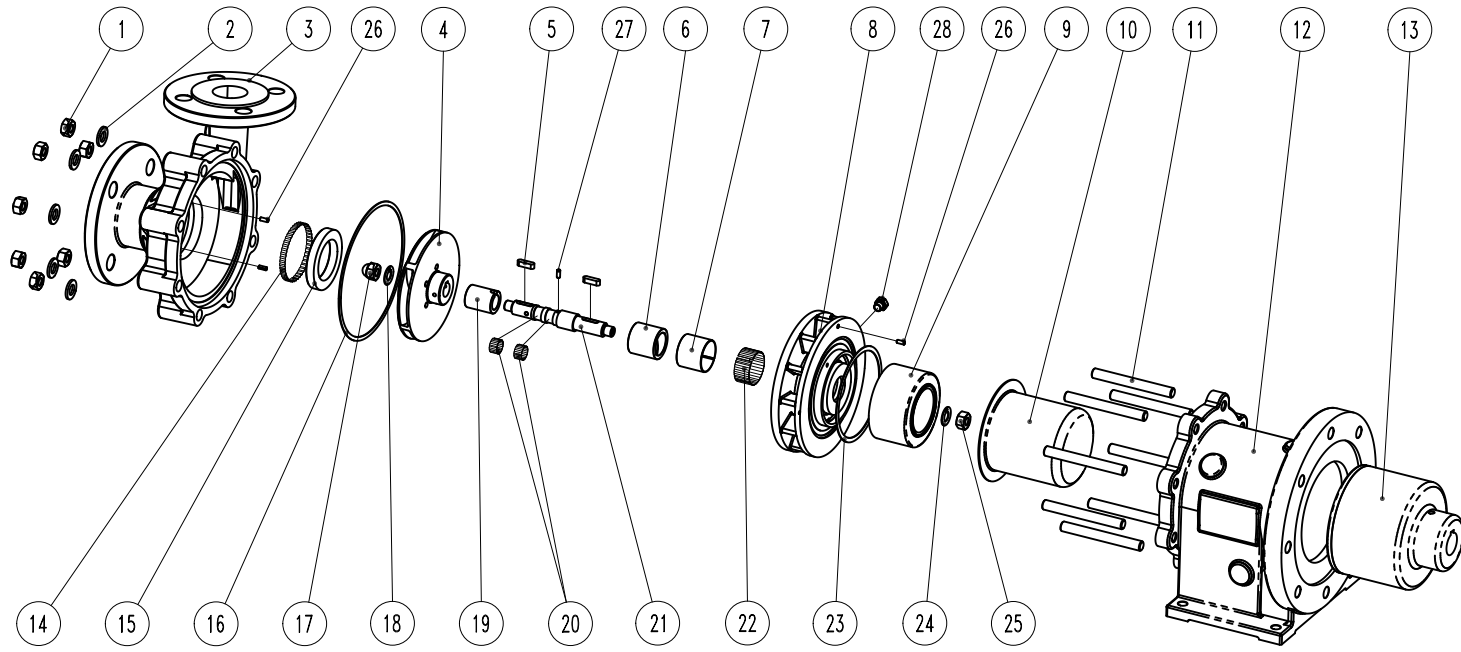
ITEM N°	META CODE	Description	Material	Q.ty	ITEM N°	META CODE	Description	Material	Q.ty
1	91620N08A2	Nut UNI5588 M8	A2-70	8	15	90140A64987	Thrustbearing	Carbon Antimony	1
2	91630S0814A2	Washer UNI1751 D.8x14	A2-70	8	16	91510A124116	Pump casing gasket	Asbestos free	1
3	96210CM001AU	Pump casing	CF8M	1	17	91620C10A2	Nut UNI5721 M10	A2-70	1
4	55710CM001A	Impeller	CF8M	1	18	91630L1016A4	Washer NORD LOCK D.10x16.6	A4-70	2
5	91640A4414A4	Key UNI6604 4x4x14	A4-70	2	19	902202530S	Sleeve Shaft	SiC	1
6	90310A3330	Bushing	Carbon Antimony	1	20	91710ARSV1210	Shaft tolerance rings	AISI 316	2
7	902103528A	Sleeve Bushing	AISI 316	1	21	55010CM001A	Shaft	AISI 316	1
8	56130CM001A	Shaft support	CF8M	1	22	91710ARHV3714	Bushings tolerance rings	AISI 316	2
9	55820T0002NA	Internal magnet	AISI 316/NdFeB	1	23	91510A975825	Rear casing gasket	Asbestos free	1
10	90810A14008	Rear casing	AISI 316	1	24	9315014MA	Plug 1/4" NPT	AISI 316	1
11	91610P877A2	Stud Bolt M8x77	AISI 420	8	25	91620N10A4	Nut UNI5588 M10	A4-70	1
12	56110CM00108C	Bracket	WCB	1	26	93030D04L08A2	Elastic pin #4x8	A2-70	3
13	55810T000208N	External magnet	ASTM A105/NdFeB	1	27	9316700410A2	Socket screw UNI5927 M4x10	A2-70	1
14	51710ERHV6506	Casing tolerance ring	AISI 304	1					

Motor: IEC Gr80 B5
 Port connection: Flanged
 ANSI (ASA) B16.5 150 lbs / UNI2282-67 PN.16

- This drawing is for reference only

EXPLODED VIEW

CODE: E 10279 Rev.:01



ITEM: Pump model: CM MAG-M2

PART LIST

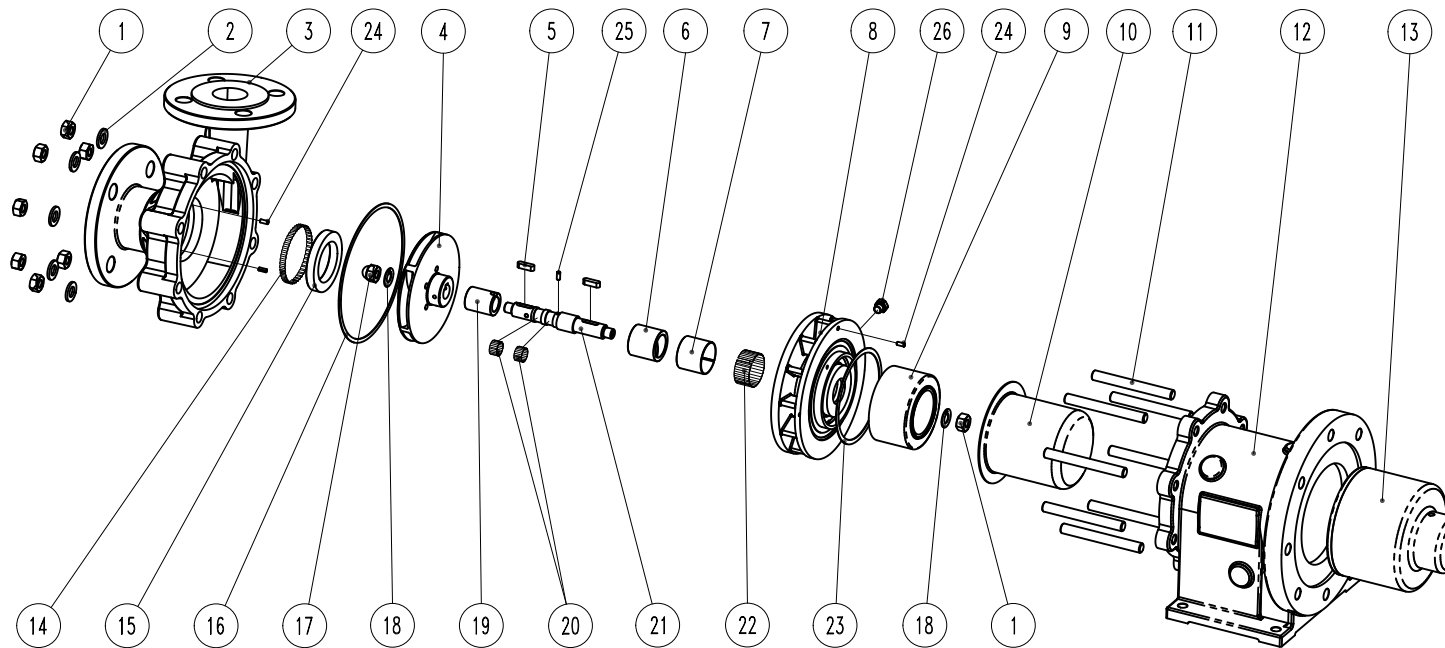
Motor: IEC Gr90 B5
 Port connection: Flanged
 ANSI (ASA) B16.5 150 lbs / UN12282-67 PN.16

ITEM N°	META CODE	Description	Material	Q.ty	ITEM N°	META CODE	Description	Material	Q.ty
1	91620N10A2	Nut UNI5588 M10	A2-70	8	15	90140A65109	Thrustbearing	Carbon Antimony	1
2	91630S1017A2	Washer UNI1751 D.10x17	A2-70	8	16	91510A164152	Pump casing gasket	Asbestos free	1
3	96210CM002AU	Pump casing	CF8M	1	17	91620C10A2	Nut UNI5721 M10	A2-70	1
4	55710CM002A	Impeller	CF8M	1	18	91630L1016A4	Washer NORD LOCK D.10x16.6	A4-70	1
5	91640A5520A4	Key UNI6604 5x5x20	A4-70	2	19	902202835S	Sleeve Shaft	SiC	1
6	90310A3835	Bushing	Carbon Antimony	1	20	91710ARSV1610	Shaft tolerance rings	AISI 316	2
7	902104033A	Sleeve Bushing	AISI 316	1	21	55010CM002A	Shaft	AISI 316	1
8	56130CM002A	Shaft support	CF8M	1	22	91710ARHV4220	Bushings tolerance rings	AISI 316	2
9	55820T0003NA	Internal magnet	AISI 316/NdFeB	1	23	91510A1075895	Rear casing gasket	Asbestos free	1
10	90810A13013	Rear casing	AISI 316	1	24	91630L1319A4	Washer NORD LOCK D.12x19.5	A4-70	1
11	91610P1094A2	Stud Bolt M10x94	AISI 420	8	25	91620N12A4	Nut UNI5588 M12	A4-70	1
12	56110CM00210C	Bracket	WCB	1	26	93030D04L08A2	Elastic pin #4x8	A2-70	3
13	55810T000310N	External magnet	ASTM A105/NdFeB	1	27	9316700410A2	Socket screw UNI5927 M4x10	A2-70	1
14	51710ERHV6506	Casing tolerance ring	AISI 304	1	28	9315014MA	Plug 1/4" NPT	AISI 316	1

- This drawing is for reference only

EXPLODED VIEW

CODE: E 10280 Rev.:01



ITEM: Pump model: CM MAG-M3

PART LIST

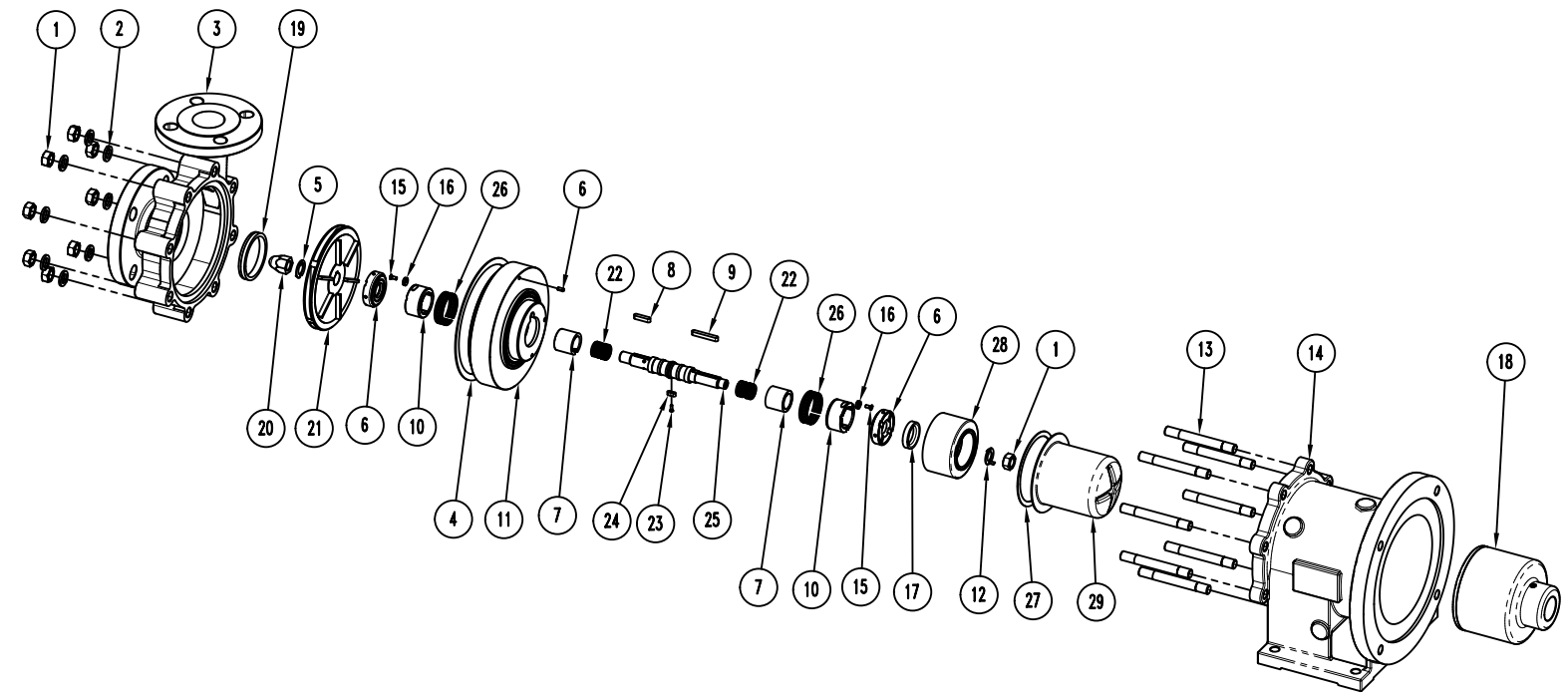
ITEM N°	META CODE	Description	Material	Q.ty	ITEM N°	META CODE	Description	Material	Q.ty
1	91620N12A2	Nut UNI5588 M12	A2-70	9	15	90140A749105	Thrustbearing	Carbon Antimony	1
2	91630S1221A2	Washer UNI1751 D.12x21	A2-70	8	16	91510A17351635	Pump casing gasket	Asbestos free	1
3	96210CM003AU	Pump casing	CF8M	1	17	91620C12A4	Nut UNI5721 M12	A4-70	1
4	55710CM003A	Impeller	CF8M	1	18	91630L1319A4	Washer NORD LOCK D.10x19.5	A4-70	2
5	91640A6622A4	Key UNI6604 6x6x22	A4-70	2	19	902202835S	Sleeve Shaft	SiC	1
6	90310A3835	Bushing	Carbon Antimony	1	20	91710ARSV1610	Shaft tolerance rings	AISI 316	2
7	902104033A	Sleeve Bushing	AISI 316	1	21	55010CM003A	Shaft	AISI 316	1
8	56130CM003A	Shaft support	CF8M	1	22	91710ARHV4220	Bushings tolerance rings	AISI 316	2
9	55820T0005NA	Internal magnet	AISI 316/NdFeB	1	23	91510A12051055	Rear casing gasket	Asbestos free	1
10	90810A16508	Rear casing	AISI 316	1	24	93030D04L08A2	Elastic pin #4x8	A2-70	3
11	91610P12110A2	Stud Bolt M12x110	AISI 420	8	25	9316700410A2	Socket screw UNI5927 M4x10	A2-70	1
12	56110CM0031214C	Bracket	WCB	1	26	9315014MA	Plug 1/4" NPT	AISI 316	1
13	55810T000512N	External magnet	ASTM A105/NdFeB	1					
14	51710ERHV7506	Casing tolerance ring	AISI 304	1					

Motor: IEC Gr100/112 B5
 Port connection: Flanged
 ANSI (ASA) B16.5 150 lbs / UNI2282-67 PN.16

- This drawing is for reference only

EXPLODED VIEW

CODE: E 10387 Rev.:01



ITEM: Pump model: CM MAG-M4

PART LIST

Motor: IEC Gr132 B5
 Port connection: Flanged
 ANSI (ASA) B16.5 150 lbs / UN12282-67 PN.16

ITEM N°	META CODE	Description	Material	Q.ty	ITEM N°	META CODE	Description	Material	Q.ty
1	91620N14A2	Nut UNI588 M14	A2-70	9	16	90190A012035	Bushing lock	AISI 316	2
2	91630S1424A2	Washer UNI1751 D.14x24	A2-70	8	17	56540CM0004A	Internal magnet spacer	AISI 316	1
3	56210CM004AU	Pump casing	CF8M	1	18	55810T000516N	External magnet	A105 / NdFeB	1
4	91510A195180	Pump casing gasket	Asbestos free	1	19	55110CX04BA8510I	Pump casing wear ring	AISI 316	1
5	91630L1725A4	Washer NORD LOCK D.16x25.4	A4-70	1	20	91690016A2	Impeller nut M16	AISI 316	1
6	56010C0001A	Thrust bearing	AISI316/SiC	2	21	55710CM004A	Impeller	CF8M	1
7	902203430S	Sleeve shaft	SiC	2	22	91710ARSV2410	Shaft tolerance ring	AISI 316	4
8	91640A6628A2	Key UNI6604 6x6x28	A4-70	1	23	91610TS310A2S	Screw M3x10 spec.	A2-70	1
9	91640A6645A2	Key UNI6604 6x6x45	A4-70	1	24	51640B5514A2S	Key 5x5x14 spec.	A4-70	1
10	50310A4725	Bushing	Carbon Antimony	2	25	55010CM004A	Shaft	AISI 316	1
11	56130CM004A	Shaft support	AISI 316	1	26	91710ARHV4714	Bushings tolerance rings	AISI 316	2
12	91630L1523A4	Washer NORD LOCK D.14x23	A4-70	1	27	91510A11951045	Rear casing gasket	Asbestos free	1
13	91610P14120A2	Stud bolt M14x120	AISI 420	8	28	55820T0005NA	Internal magnet	AISI316 / NdFeB	1
14	56110CM00416C	Bracket	WCB	1	29	55610A16508	Rear casing	AISI 316	1
15	91610TS410A2	Screw UNI2009 M4x10	A2-70	2	30	93030D04L10A2	Spring pin #4x10	A2-70	1

- This drawing is for reference only