

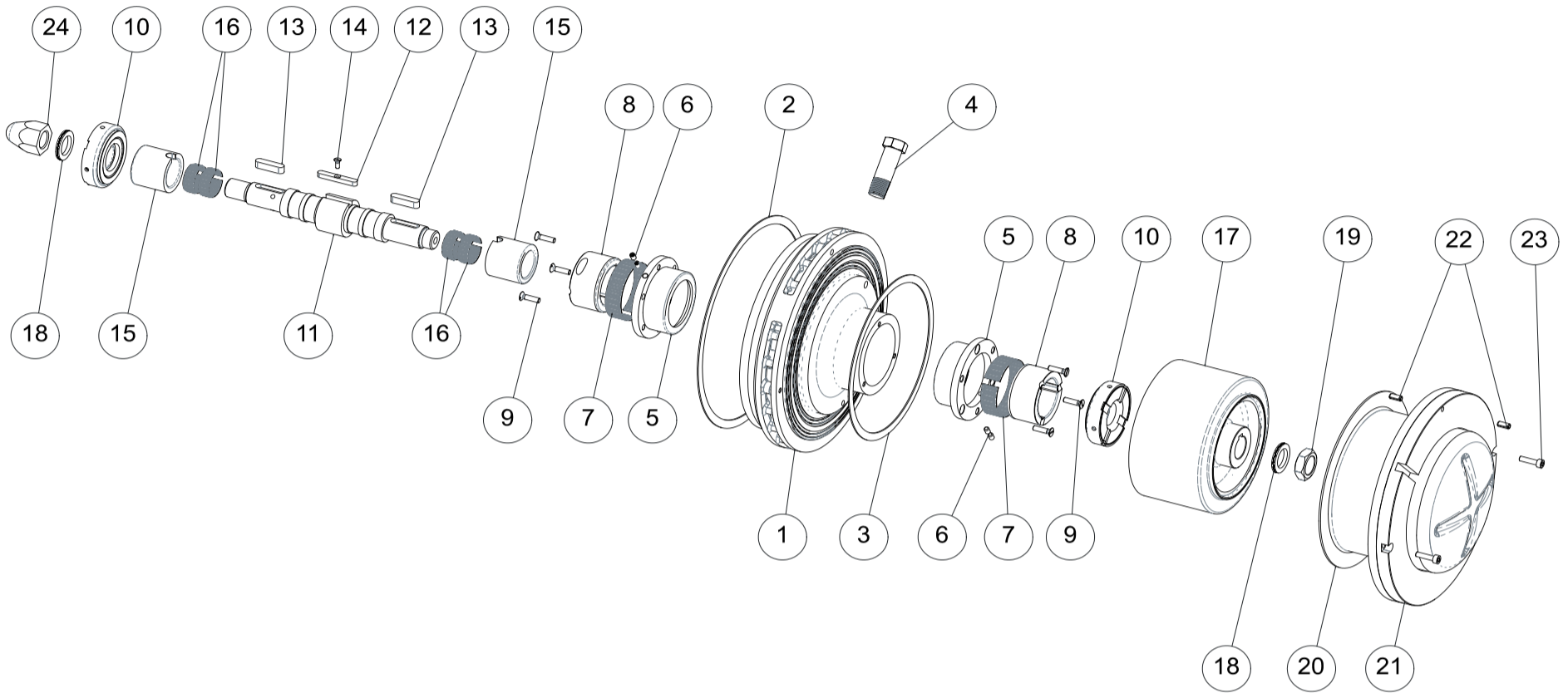


PUMP MODEL: CN MAG-M 1^Range

ITEM: RWP EXPLODED VIEWS

CODE: /

E10613



EXPLODED VIEW

N°	DESCRIPTION	IDENTIFICATION			
			COMPONENT CODE	MATERIAL	QUANTITY
1	Shaft Support	XX-125	56130C003AA	CF8M	1
		XX-160	56130C003BA		
		XX-200	56130C003CA		
2	Pump casing gasket	XX-125	91510A18401420	Asbestos Free	1
		XX-160	91510A18401700		
		XX-200	91510A22402100		
3	Rear casing gasket	1^R	91510A14351305	Asbestos Free	1
4	External flushing plug	¼"NPT	9315014MAS	AISI 316	1
5	Bushing Support	1^R	92550C0001A	AISI 316	2
6	Socket Screw UNI5927	M4x6	916700406A2	A2-70	4
7	Tolerance ring	1^R	91710ARHV4714	AISI 301	2
8	Bushing	1^R	90310S4725	Ssic	2
9	Screw UNI2009	M4x12	91610TSTC412A2	A2-70	6
10	Thrust bearing	1^R	56010C001A	SSiC / AISI 316	2
11	Shaft	1^R	55010C0001D	Duplex 22%Cr	1
12	Special Key	5x4x35	91640A5535A2S	A2-70	1
13	Key UNI6604	6x6x25	91640A6625A2	A2-70	2
14	Screw UNI2009	M3x8	91610TSTC308A4	A4-70	1
15	Sleeve Shaft	1^R	902203430S	Ssic	2
16	Tolerance ring	1^R	91710ARSV2410	AISI 301	4
17	Internal Magnet	TIPO A1	55820C0001NA	AISI 316 / NeFeB	1
		TIPO B1	55820C0002NA		
		TIPO C1	55820C0003NA		
18	Lock Washer	D.16x25,4	91620R16A4	A4-70	2
19	Nut UNI5589	M16	91620R16A4	A4-70	1
20	Rear casing	1^R	55610C003AH	HC 276	1
21	Lock Flange Rear Casing	1^R	51310ACA03C	AISI 316	1
22	Elastic Pin	Ø4X10	93030D04L10A2	A2-70	2
23	Screw UNI5931	M4x16	91610TCEI416A2	A2-70	2
24	Impeller Nut	M16	91690O16A2	AISI 316	1

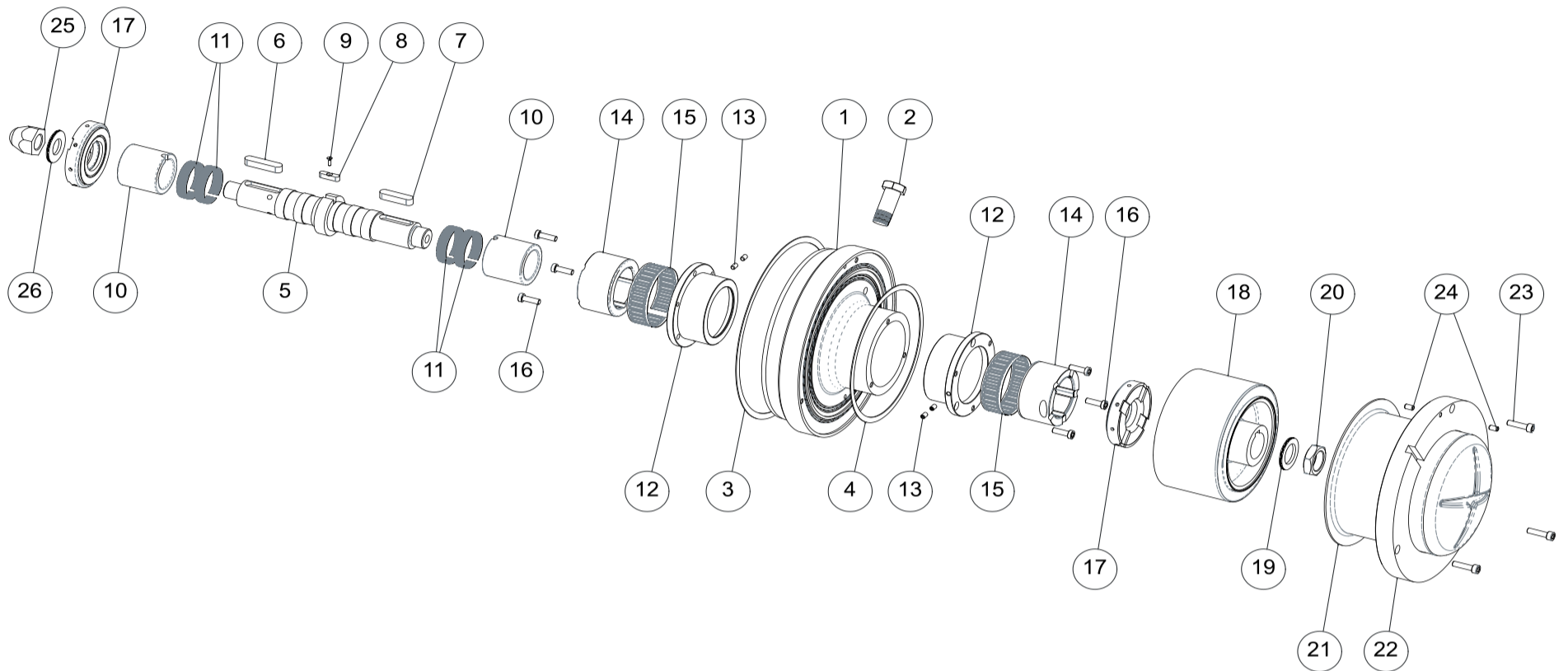


PUMP MODEL: CN MAG-M 2^Range

ITEM: RWP EXPLODED VIEWS

CODE: /

E10614



EXPLODED VIEW

N°	DESCRIPTION	IDENTIFICATION			
		COMPONENT CODE	MATERIAL	QUANTITY	
1	Shaft Support	XX-160	56130C008AA	CF8M	1
		XX-200	56130C006CA		
		XX-250	56130C003DA		
		XX-315	56130C004EA		
2	External flushing plug	3/8" NPT	9315038MAS	AISI 316	1
3	Pump Casing Gasket	XX-160	91510A22401792	Asbestos Free	1
		XX-200	91510A22402100		
		XX-250	91510A27402600		
		XX-315	91510A33503200		
4	Rear casing gasket	2^R	91510A16951565	Asbestos Free	1
5	Shaft	2^R	55010C0002D	Duplex 22%Cr	1
9	Key UNI6604	10x8x45	91640A10845A2	A2-70	1
7	Key UNI6604	10x8x40	91640A10840A2	A2-70	1
8	Special Key	6x6x24	91640A6624A2S	A2-70	1
9	Screw UNI2009	M3x10	91610TSTC310A2	A2-70	1
10	Sleeve Shaft	2^R	902205048S	Ssic	2
11	Tolerance ring	2^R	91710ARSV5012	AISI 301	4
12	Bushing Support	2^R	92550C0002A	AISI 316	2
13	Socket Screw UNI5927	M5x8	916700508A2	A2-70	4
14	Bushing	2^R	90310S7040	Ssic	2
15	Tolerance ring	2^R	91710ARHV7025	AISI 301	2
16	Screw UNI7984	M6x16	91610TCEI616A2R	A2-70	6
17	Thrust bearing	2^R	56010C0002A	SSic / AISI 316	2
18	Internal magnet	TIPO F1	55820C0005NA	AISI 316 / NeFeB	1
		TIPO G1	55820C0006NA		
		TIPO H1	55820C0007NA		
19	Lock Washer	D.24x39	91630L2439A4	A4-70	1
20	Nut UNI5589	M24	91620R24A4F	A4-70	1
21	Rear casing	2^R	95610C006BH	HC 276	1
22	Lock Flange Rear Casing	2^R	51310AC003D	AISI 316	1
23	Screw UNI5931	M6x20	91610TCEI620A2	A2-70	3
24	Elastic Pin	Ø5X10	93030D05L10A2	A2-70	2
25	Impeller nut	M20	91690O20A2	AISI 316	1
26	Lock Washer	D.20x39	91630L2039A4	A4-70	1

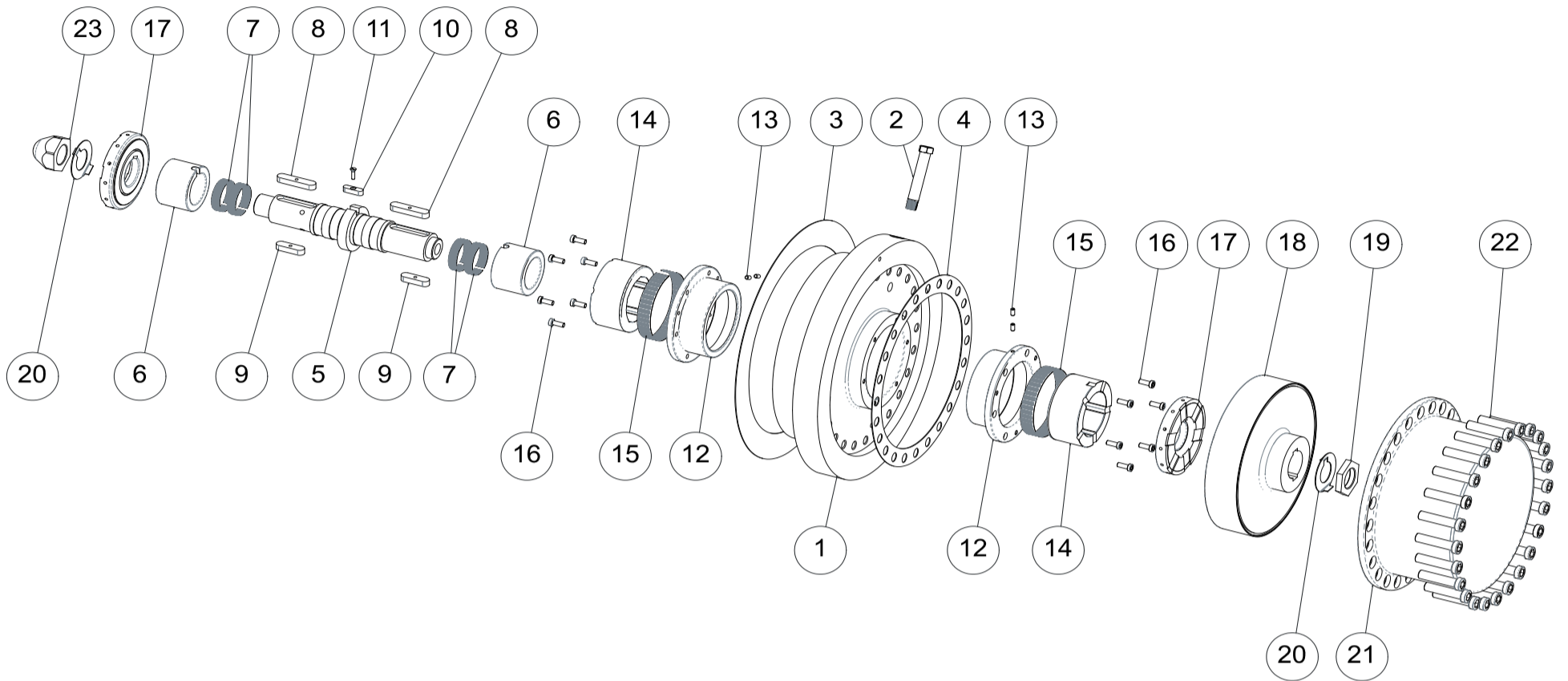


PUMP MODEL: CN MAG-M 3^Range

ITEM: RWP EXPLODED VIEWS

CODE: /

E10615



EXPLODED VIEWS

N°	DESCRIPTION	IDENTIFICATION			
			COMPONENT CODE	MATERIAL	QUANTITY
1	Shaft Support	XX-250	96130C015DA	AISI 316	1
		XX-315	96130C015EA		
		XX-400	91630C015FA		
2	External flushing plug	½"NPT	5315014MAS12	AISI 316	1
3	Pump casing gasket	XX-250	91510A34402720	Asbestos Free	1
		XX-315	91510A33403200		
		XX-400	91510A44504250		
4	Rear casing gasket	3^R	91510A27602243	Asbestos Free	1
5	Shaft	3^R	55010C0003D	Duplex 22%Cr	1
6	Sleeve Shaft	3^R	902206545S	Ssic	2
7	Tolerance Ring	3^R	91710HRSV5012	AISI 301	4
8	Key UNI 6604	12x8x55	91640A12855A2	A2-70	2
9	Key UNI 6604	12x8x40	91640A12840A2	A2-70	2
10	Special Key	8x7x28	91640A8728A2S	AISI 316	1
11	Screw UNI2009	M4x16	91610TSTC416A2	A2-70	1
12	Bushing Suppot	3^R	92550C0003A	AISI 316	2
13	Socket Screw UNI5927	M5x10	916700510A2	A2-70	4
14	Bushing	3^R	90310S9545	Ssic	2
15	Tolerance Ring	3^R	91710ARHV9519	AISI 301	2
16	Screw DIN7984	M6x16	91610TCEI616A2R	A2-70	12
17	Thrustbearing	3^R	56010C0003A	SSic / AISI 316	2
18	Internal magnet	Type L1	55820C0009NA	AISI 316 / NeFeB	1
		Type L2	55820C0011NA		
19	Lock Ring	M30	51620G30A2	AISI 316	1
20	Security Washer	D.30	91660R10530A2	AISI 316	2
21	Rear casing	3^R	95610C015DT	Ti GR 5	1
22	Screw DIN7984	M12x30	91610TCEI1230A2R	A2-70	24
23	Impeller Nut	M30	91690O30A2	AISI 316	1