

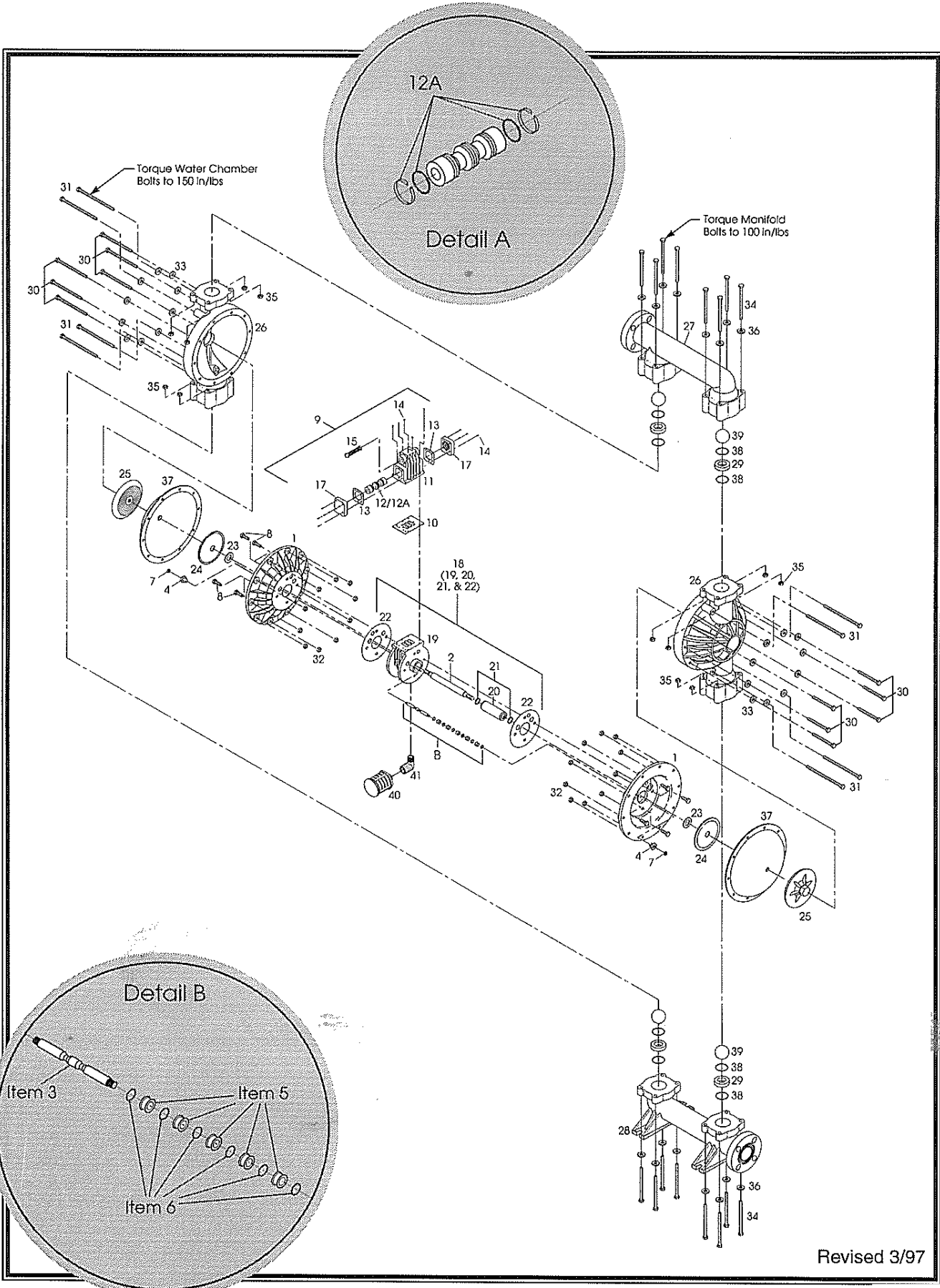
NÁHRADNÍ DÍLY VERSA-MATIC model E2 plast

E2P/E2K 2" Pumps with Rubber Elastomers Assembly Drawing & Parts Lists

Item	Description	Qty	Pump Model Number			
			E2PA	E2KA	E2PS	E2KS
1	Air Chamber	2	P24-111		SP24-111	
2	Shaft	1	P24-103			
3	Pilot Shaft	1	P24-104			
4	Bushing, Threaded	2	P24-105		SP24-105	
5	Pilot Valve Spacer Rings	5	P24-106			
6	Pilot Valve O-Rings	6	P24-107			
7	Stop Nut	2	P24-108			
8	Bolt	8	P34-110		SP34-110	
9	Valve Assembly (Items 10-17)	1	P34-200		SP34-200	
10	Gasket, Air Valve	1	P24-202			
11	Valve & Sleeve Assembly	1	P34-211		SP34-211	
12	Spool, Air Supply	1	P34-204			
12a	Glyd Ring Assembly	2	P34-204F			
13	Gasket, End Cap	2	P24-205			
14	Cap Screw	13	P24-208			
15	Air Valve Screen	1	P24-210			
16						
17	End Cap Assembly	2	P34-300		SP34-300	
18	Center Block Assembly (Items 19-22)	1	P24-400		SP24-400	
29	Center Block	1	P24-401		SP24-401	
20	Bearing Sleeve	1	P24-402			
21	Center Block O-Ring	2	P24-403			
22	Center Block Gasket	2	P24-109			
23	Bumper Washer	2	P24-501			
24	Inner Diaphragm Plate	2	V226B		SV226B	
25	Outer Diaphragm Plate	2	PV226B	KV226B	PV226B	KV226B
26	Water Chamber	2	PV235	KV235	PV235	KV235
27	Discharge Manifold	1	PV236	KV236	PV236	KV236
28	Suction Manifold	1	PV237	KV237	PV237	KV237
29	Valve Seat	4	PV240	KV240	PV240	KV240
30	Bolt, Water Chamber (Short)	12	SV250A			
31	Bolt, Water Chamber (Long)	8	SV250B			
32	Flange Nut	20	SV185B			
33	Washer	20	SV189C			
34	Bolt, Manifold	16	SV251A			
35	Nut, Manifold	16	SV354B			
36	Washer, Manifold	32	SV302GA			
37	Diaphragm (See Chart)	2	V227 (Elastomer Code Suffix Required, See Chart)			
38	Valve Seat O-Ring (See Chart)	4	V258 (Elastomer Code Suffix Required, See Chart)			
39	Valve Ball	4	V241 (Elastomer Code Suffix Required, See Chart)			
40	Muffler	1	VTM-6			
41	Plastic Elbow	1	PV220G			

Diaphragms Material Codes	Valve Ball Material Code	O-Ring Material Code
V227N (Neoprene) V227BN (Buna-N) V227VT (Viton) V227ND (Nordel) V227TPEFG (Hytrel)	V241N (Neoprene) V241BN (Buna-N) V241VT (Viton) V241ND (Nordel) V241TF (Teflon) V241TPEFG (Hytrel) V241TPEXL (XL) V241P (Polyurethane)	V258ND (Nordel) V258TES (Teflon Encap. Silicone) V258BN (Buna-N) V258VT (Viton)

NÁHRADNÍ DÍLY VERSA-MATIC model E2 plast



Revised 3/97