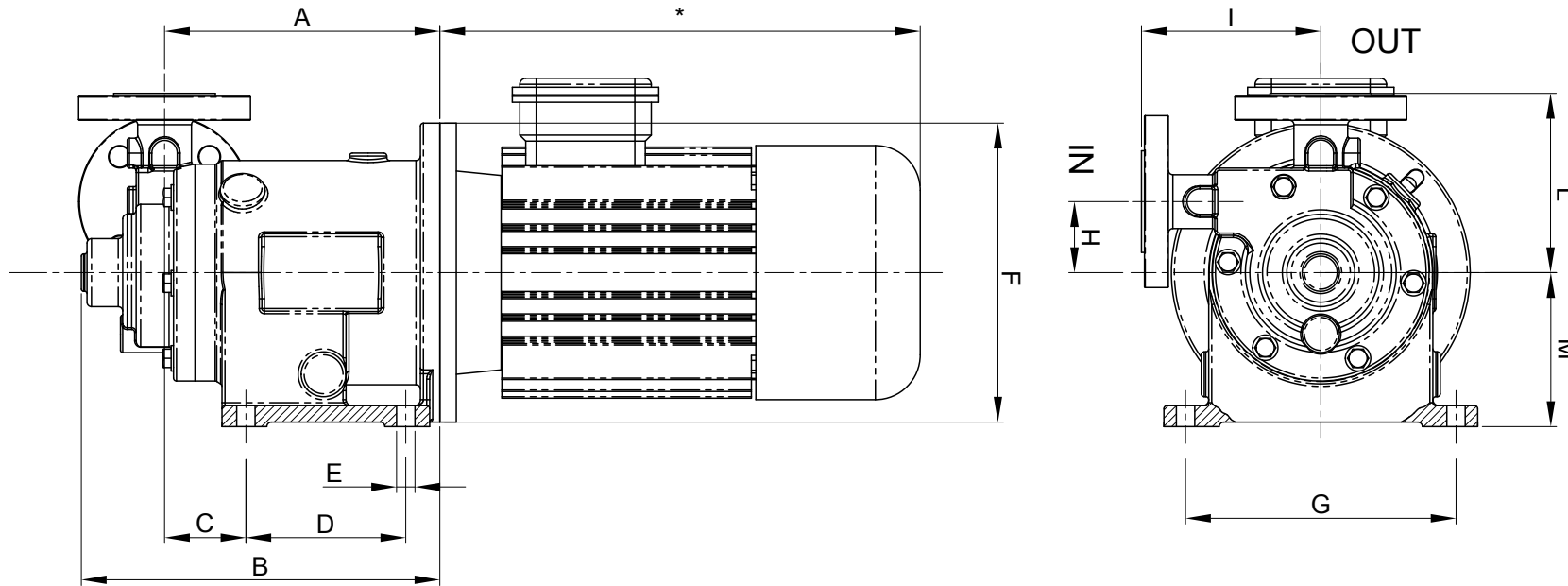


# OUTLINE DRAWING

CODE: D 11434 Rev.:01

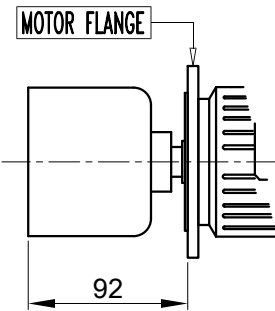


ITEM: Pump model: T MAG-M1

# DIMENSIONS

A	B	C	D	E	F	G	H	I	L	M
140.5	181.5	41.5	80	9	160	140	46	95	99	85

external magnet



P	Q	R	S	T	U
15	60.3	65	95	15.9	18.3

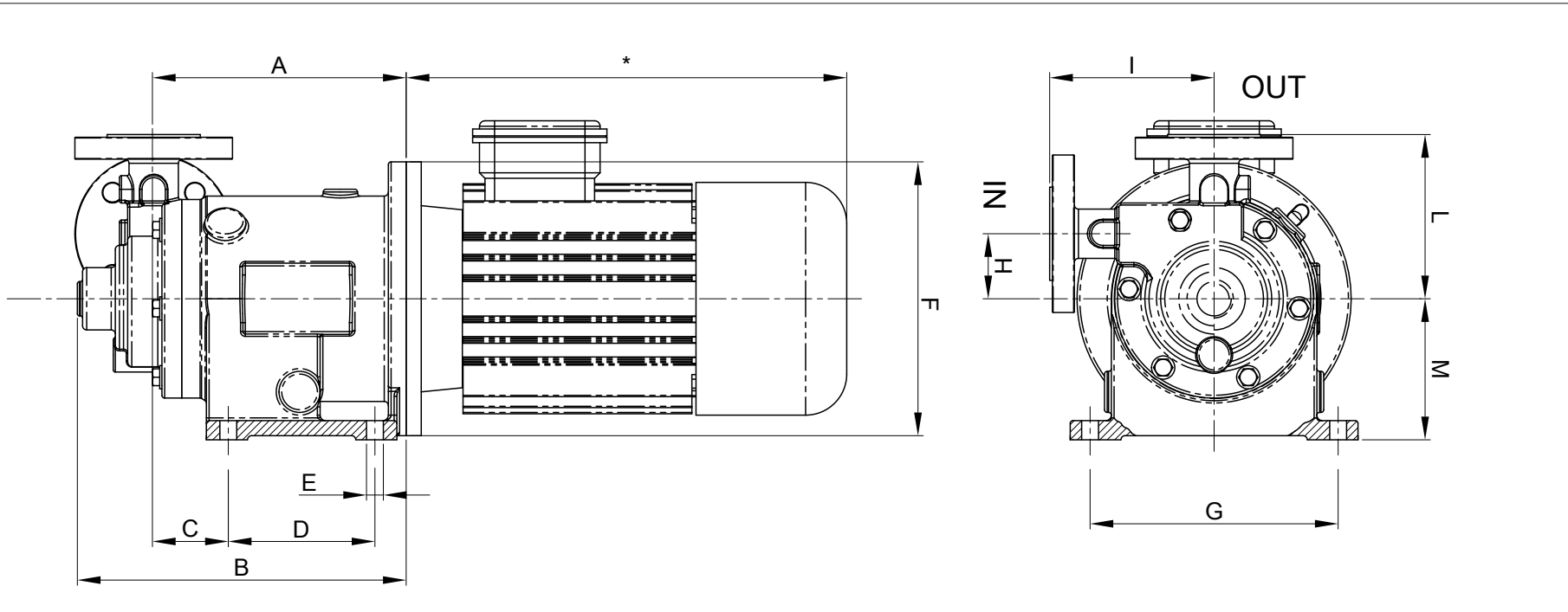
- This drawing is for reference only
- Pump may be supplied without motor
- All dimensions are in millimeters

\* Depend on the manufacturer

Motor: IEC Gr71  
 Port connections: Universal Flanged  
 Standard: ANSI (ASA) B16.5 150 lbs / EN 1092-1 PN,25

# OUTLINE DRAWING

CODE: D 11435 Rev.:01



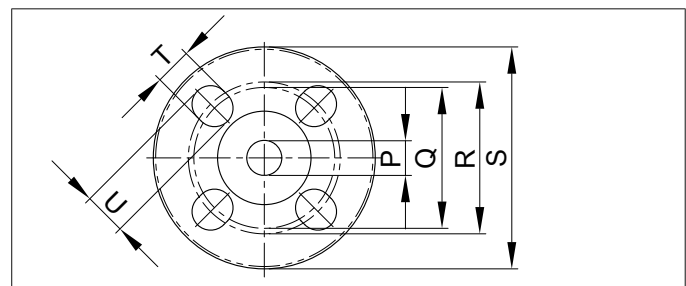
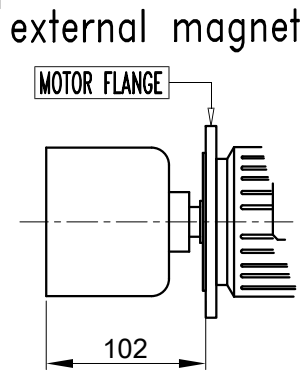
ITEM: Pump model: T MAG-M1

# DIMENSIONS

A	B	C	D	E	F	G	H	I	L	M
150.5	191.5	41.5	90	9	200	150	46	95	99	102

- This drawing is for reference only
- Pump may be supplied without motor
- All dimensions are in millimeters

\* Depend on the manufacturer

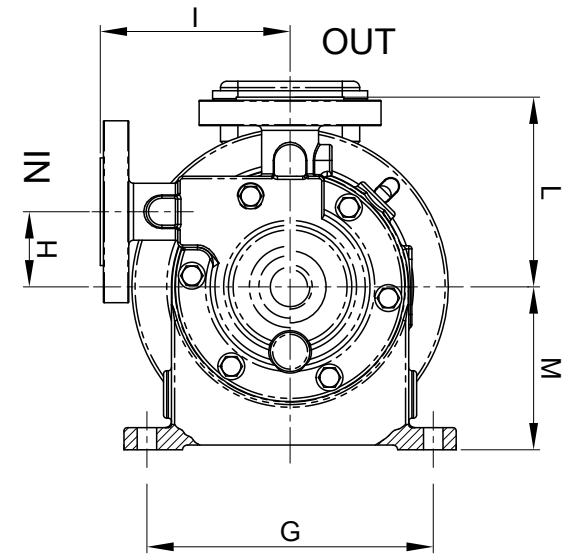
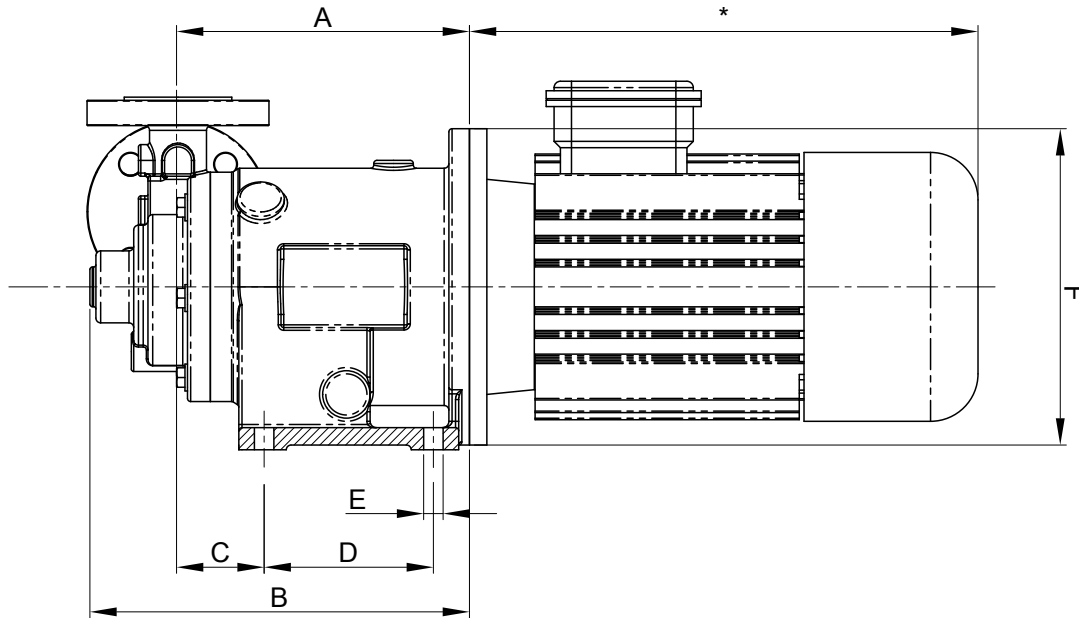


P	Q	R	S	T	U
15	60.3	65	95	15.9	18.3

Motor: IEC Gr80  
 Port connections: Universal Flanged  
 Standard: ANSI (ASA) B16.5 150 lbs / EN 1092-1 PN,25

# OUTLINE DRAWING

CODE: D 11436 Rev.:01



ITEM: Pump model: T MAG-M2

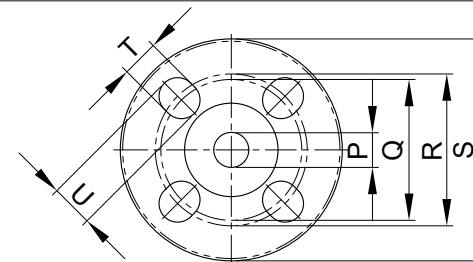
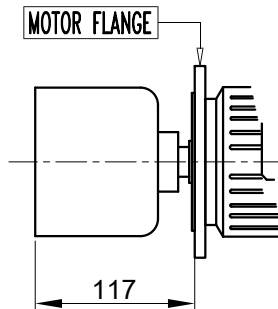
# DIMENSIONS

A	B	C	D	E	F	G	H	I	L	M
172.2	222.3	47.2	104	11	200	165	50	110	115	103

- This drawing is for reference only
- Pump may be supplied without motor
- All dimensions are in millimeters

\* Depend on the manufacturer

external magnet



P	Q	R	S	T	U
20	69.8	75	105	15.9	18.5

Motor: IEC Gr80 / Gr90  
 Port connections: Universal Flanged  
 Standard: ANSI (ASA) B16.5 150 lbs / EN 1092-1 PN,25

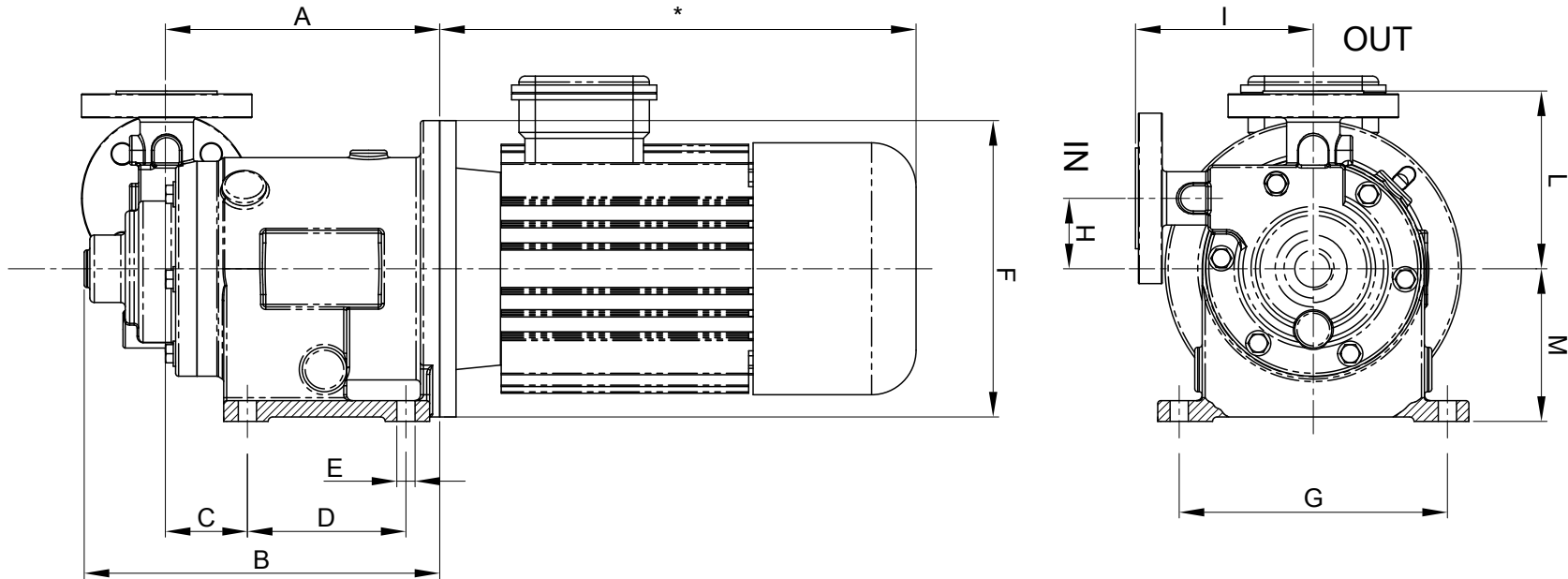
# OUTLINE DRAWING

CODE: D 11437 Rev.:01



ITEM: Pump model: T MAG-M3

Motor: IEC Gr.90  
 Port connections: Universal Flanged  
 Standard: ANSI (ASA) B16.5 150 lbs / EN 1092-1 PN,25

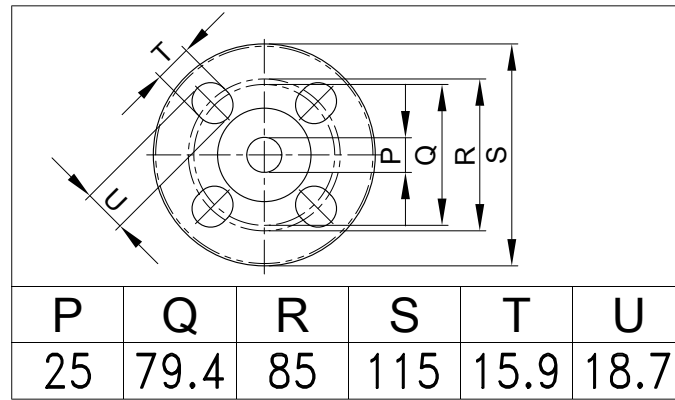
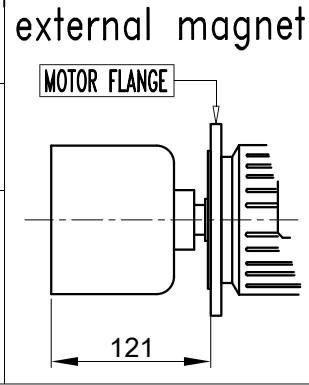


# DIMENSIONS

A	B	C	D	E	F	G	H	I	L	M
184.2	240	53.5	109	11	200	180	47.5	120	120	103

- This drawing is for reference only
- Pump may be supplied without motor
- All dimensions are in millimeters

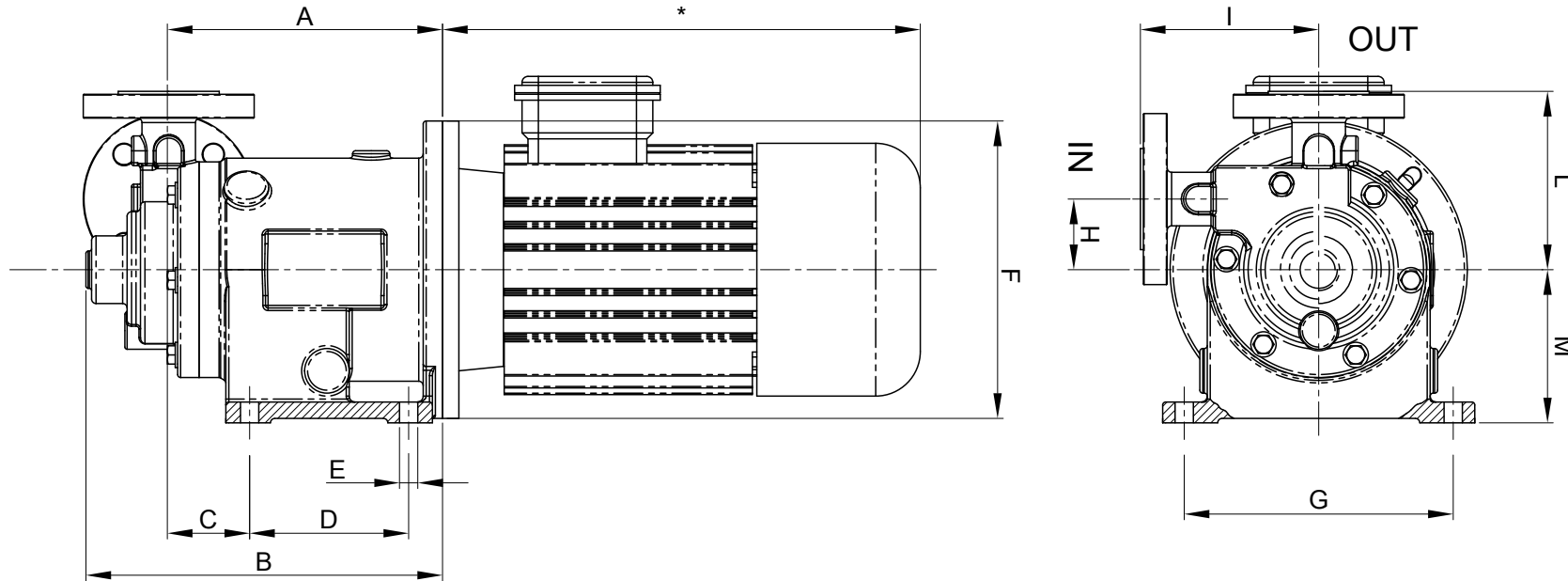
\* Depend on the manufacturer



P	Q	R	S	T	U
25	79.4	85	115	15.9	18.7

# OUTLINE DRAWING

CODE: D 11438 Rev.:01



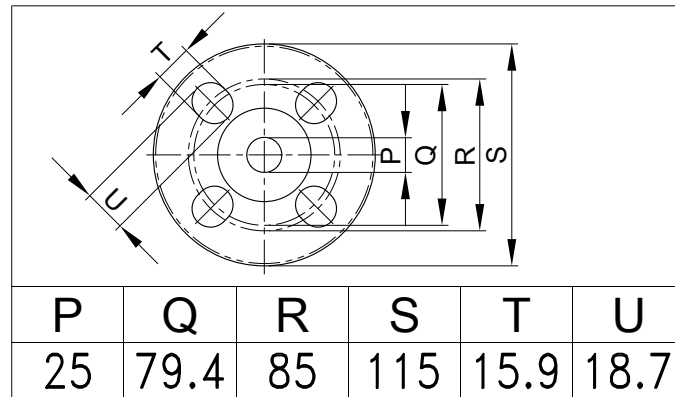
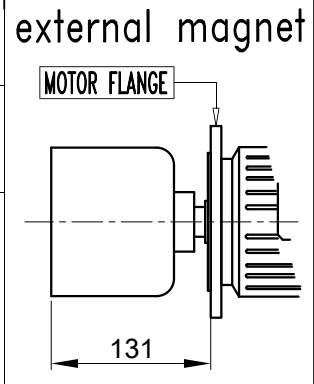
ITEM: Pump model: T MAG-M3

# DIMENSIONS

A	B	C	D	E	F	G	H	I	L	M
192	248	51.2	109	11	250	180	47.5	120	120	130

- This drawing is for reference only
- Pump may be supplied without motor
- All dimensions are in millimeters

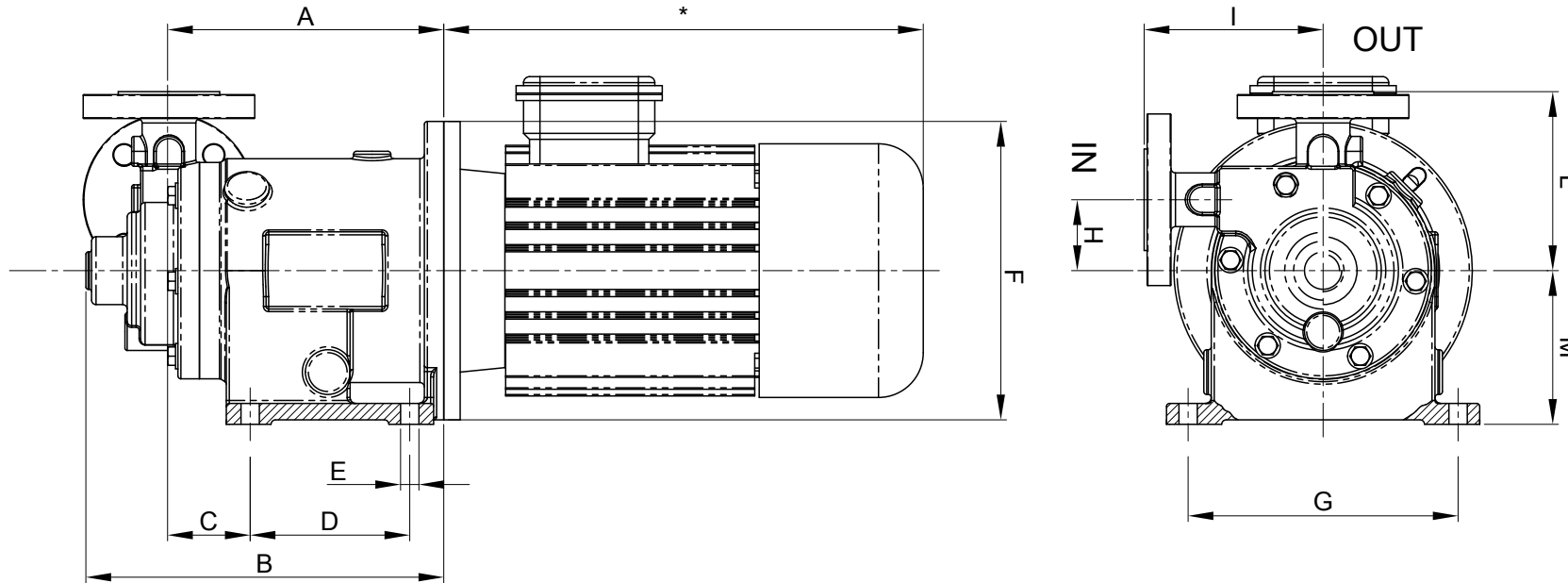
\* Depend on the manufacturer



Motor: IEC Gr.100/112  
 Port connections: Universal Flanged  
 Standard: ANSI (ASA) B16.5 150 lbs / EN 1092-1 PN,25

# OUTLINE DRAWING

CODE: D 11439 Rev.:01

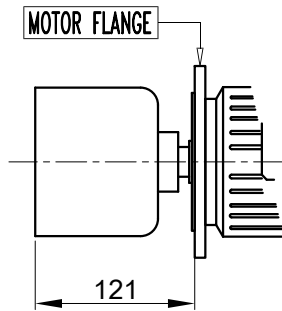


ITEM: Pump model: T MAG-M4

# DIMENSIONS

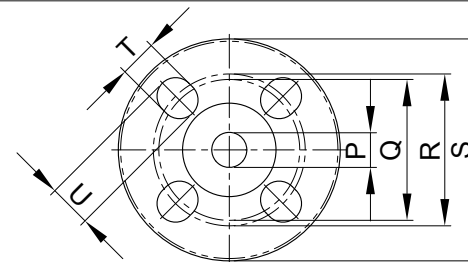
A	B	C	D	E	F	G	H	I	L	M
184.2	240.1	53.5	109	11	200	180	47.5	120	120	103

external magnet



\* Depend on the manufacturer

- This drawing is for reference only
- Pump may be supplied without motor
- All dimensions are in millimeters

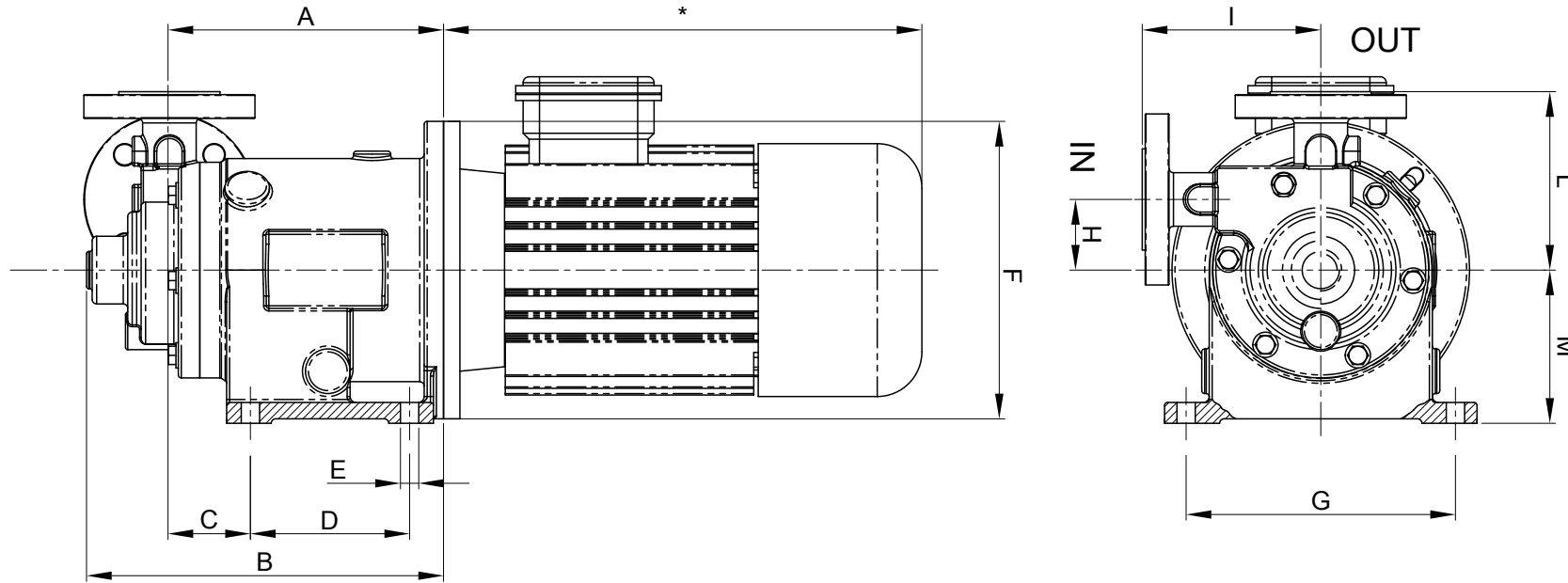


P	Q	R	S	T	U
25	79.4	85	115	15.9	18.7

Motor: IEC Gr.90  
 Port connections: Universal Flanged  
 Standard: ANSI (ASA) B16.5 150 lbs / EN 1092-1 PN,25

# OUTLINE DRAWING

CODE: D 11440 Rev.:01



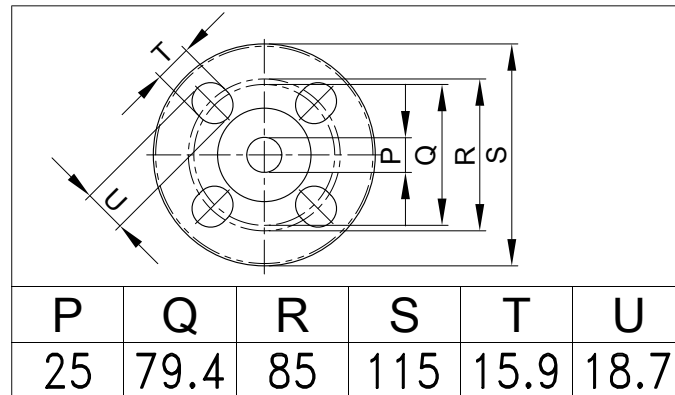
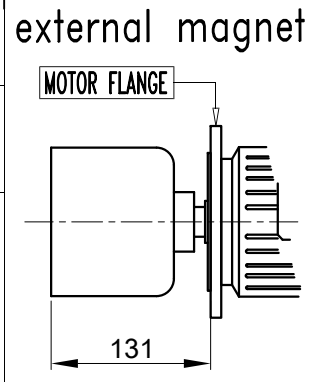
ITEM: Pump model: T MAG-M4

# DIMENSIONS

A	B	C	D	E	F	G	H	I	L	M
192	248	51.2	109	11	250	180	47.5	120	120	130

- This drawing is for reference only
- Pump may be supplied without motor
- All dimensions are in millimeters

\* Depend on the manufacturer



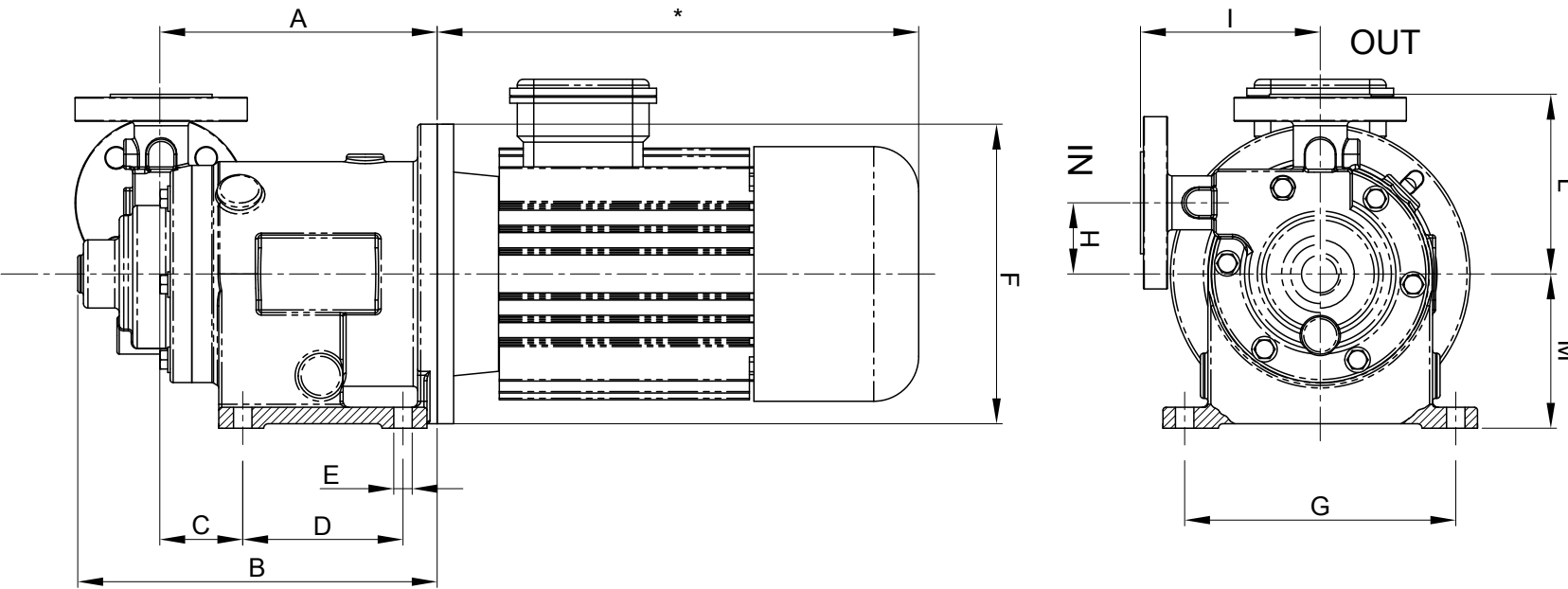
Motor: IEC Gr.100/112  
 Port connections: Universal Flanged  
 Standard: ANSI (ASA) B16.5 150 lbs / EN 1092-1 PN,25

# OUTLINE DRAWING

CODE: D 11441 Rev.:01



ITEM: Pump model: T MAG-M5

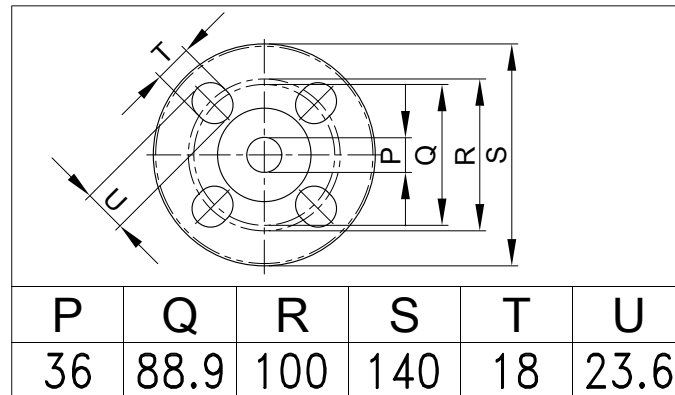
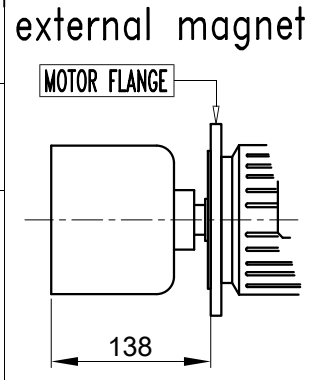


# DIMENSIONS

A	B	C	D	E	F	G	H	I	L	M
207	273.5	65	120	11.5	250	190	62	146	146	135

- This drawing is for reference only
- Pump may be supplied without motor
- All dimensions are in millimeters

\* Depend on the manufacturer



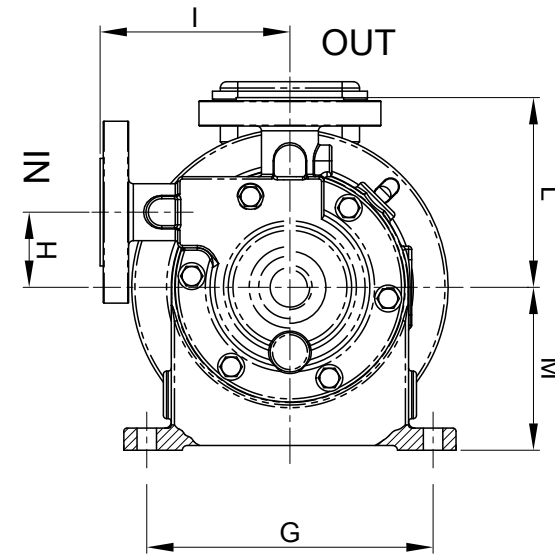
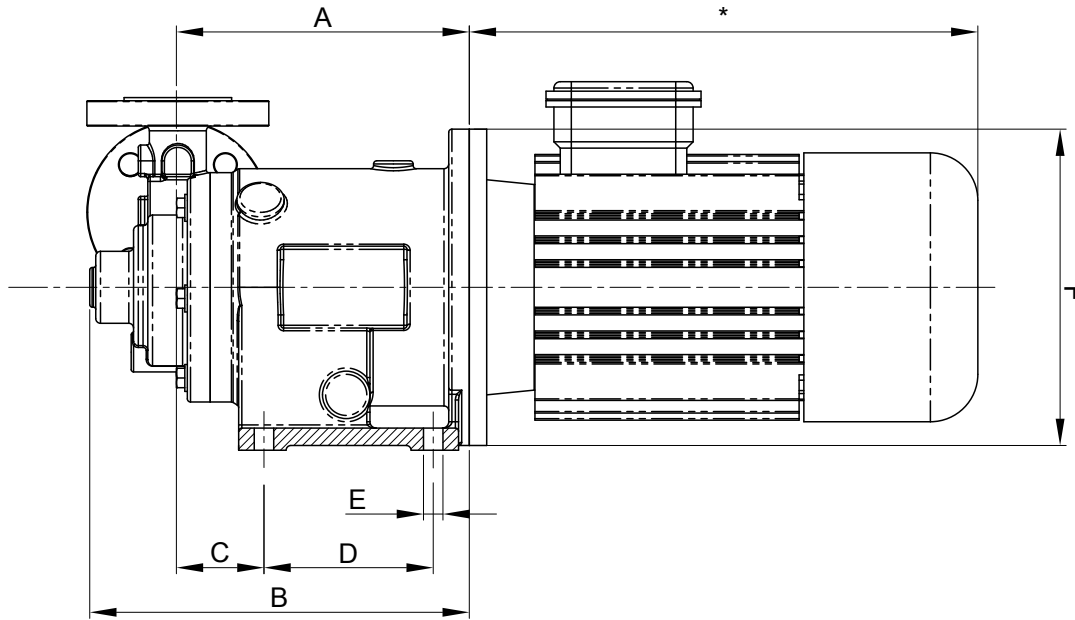
P	Q	R	S	T	U
36	88.9	100	140	18	23.6

Motor: IEC Gr.100/112  
 Port connections: Universal Flanged  
 Standard: ANSI (ASA) B16.5 150 lbs / EN 1092-1 PN,25



# OUTLINE DRAWING

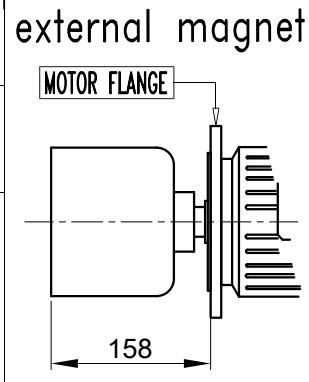
CODE: D 11442 Rev.:01



ITEM: Pump model: T MAG-M5

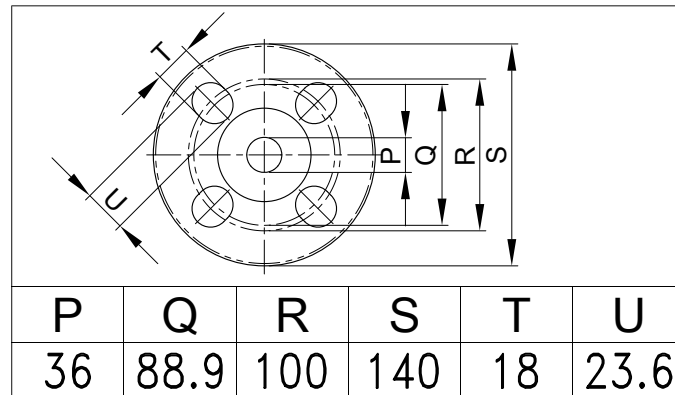
# DIMENSIONS

A	B	C	D	E	F	G	H	I	L	M
227	293.5	70	120	11.5	300	190	62	146	146	155



\* Depend on the manufacturer

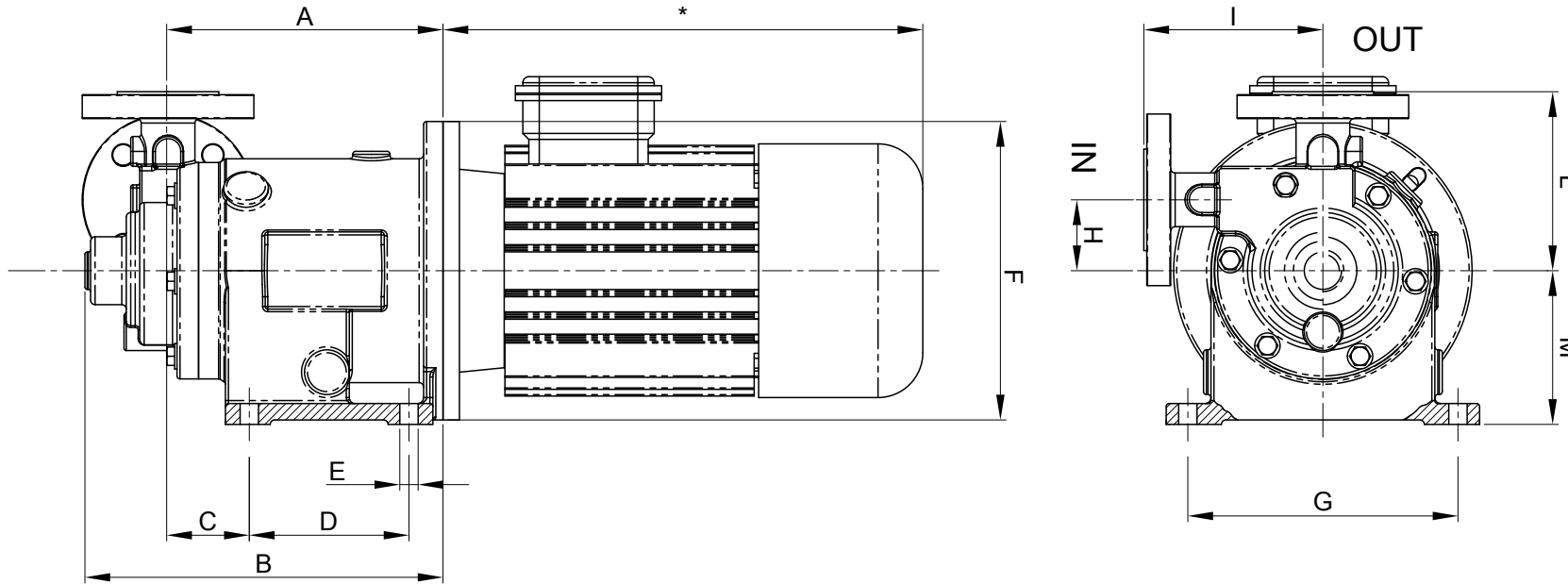
- This drawing is for reference only
- Pump may be supplied without motor
- All dimensions are in millimeters



Motor: IEC Gr.132  
 Port connections: Universal Flanged  
 Standard: ANSI (ASA) B16.5 150 lbs / EN 1092-1 PN,25

# OUTLINE DRAWING

CODE: D 11443 Rev.:01



ITEM: Pump model: T MAG-M6

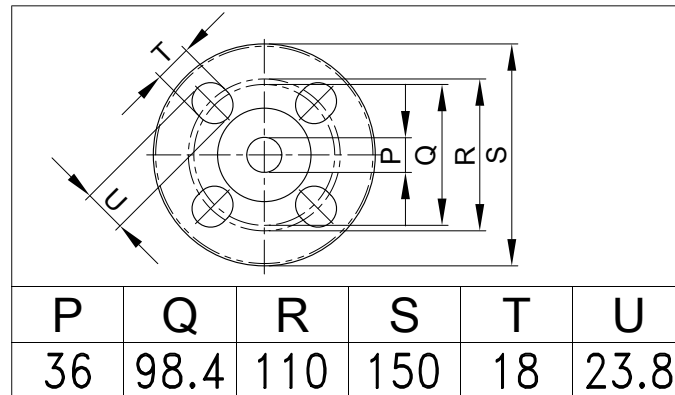
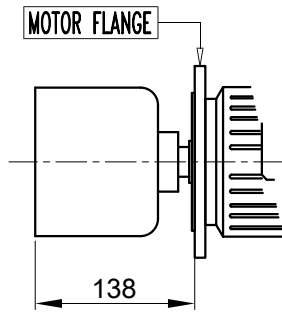
# DIMENSIONS

A	B	C	D	E	F	G	H	I	L	M
207	273.5	65	120	11.5	250	190	62	146	146	135

- This drawing is for reference only
- Pump may be supplied without motor
- All dimensions are in millimeters

\* Depend on the manufacturer

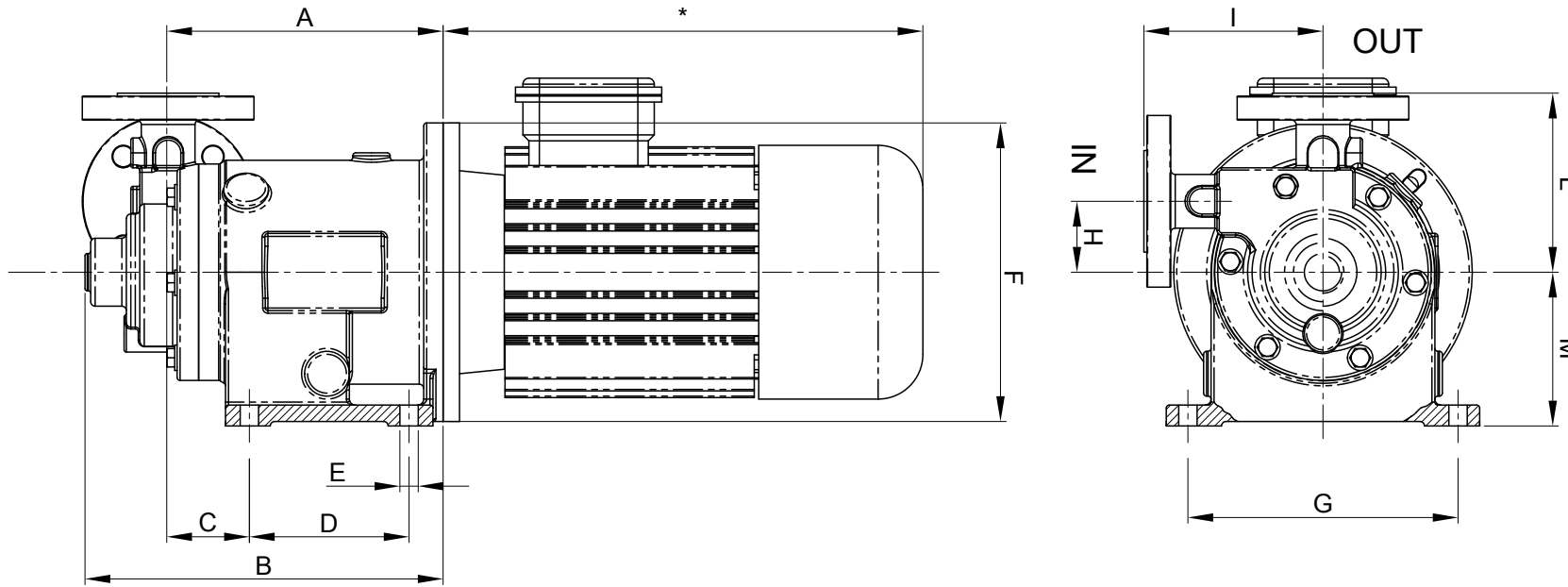
external magnet



Motor: IEC Gr.100/112  
 Port connections: Universal Flanged  
 Standard: ANSI (ASA) B16.5 150 lbs / EN 1092-1 PN,25

# OUTLINE DRAWING

CODE: D 11444 Rev.:01

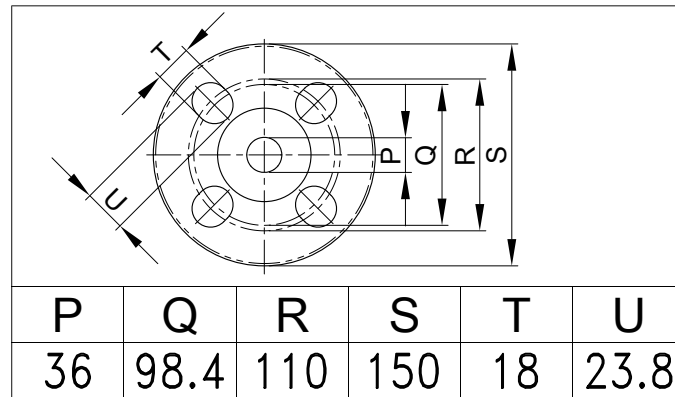
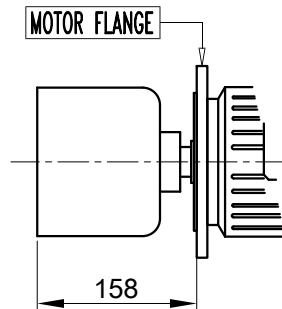


ITEM: Pump model: T MAG-M6

# DIMENSIONS

A	B	C	D	E	F	G	H	I	L	M
227	293.5	70	120	11.5	300	190	62	146	146	155

external magnet



- This drawing is for reference only
- Pump may be supplied without motor
- All dimensions are in millimeters

\* Depend on the manufacturer

Motor: IEC Gr.132  
 Port connections: Universal Flanged  
 Standard: ANSI (ASA) B16.5 150 lbs / EN 1092-1 PN,25