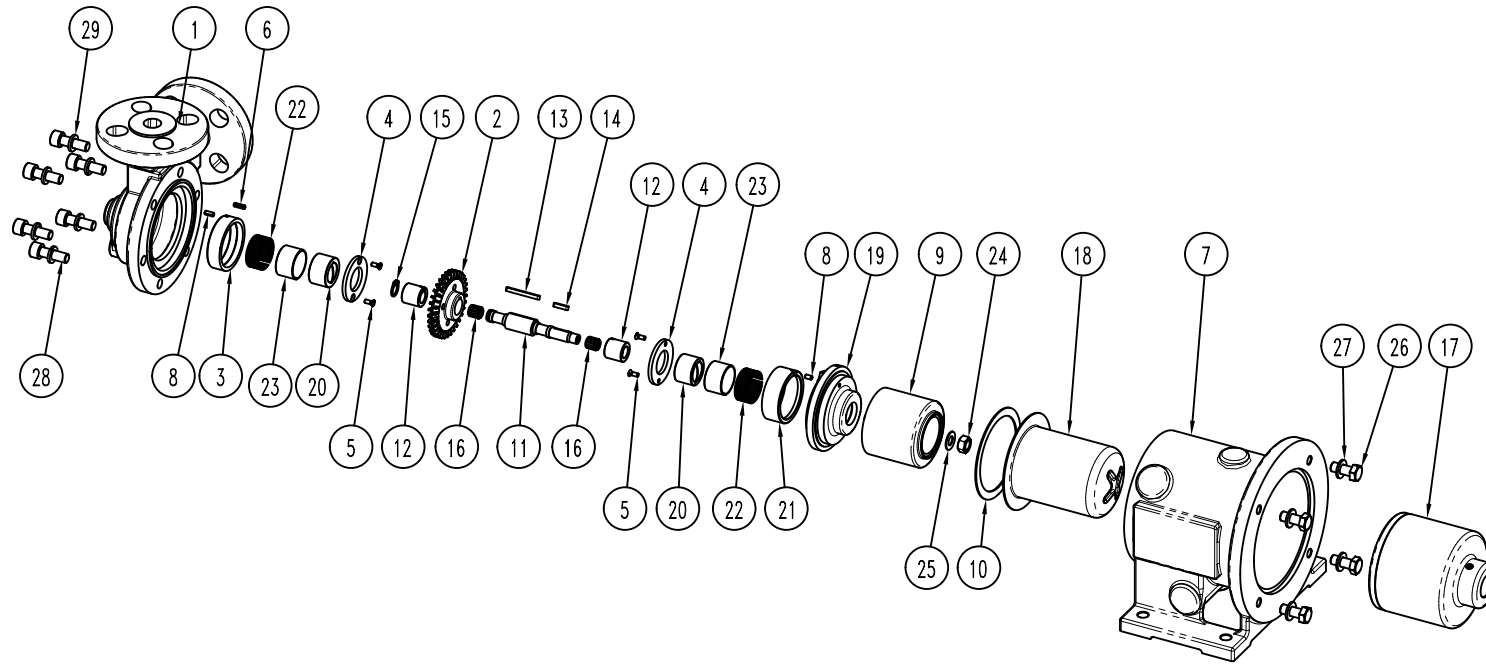


# EXPLODED VIEW

CODE: E10077 Rev.:01



ITEM: Pump model: T MAG-M 1

# PART LIST

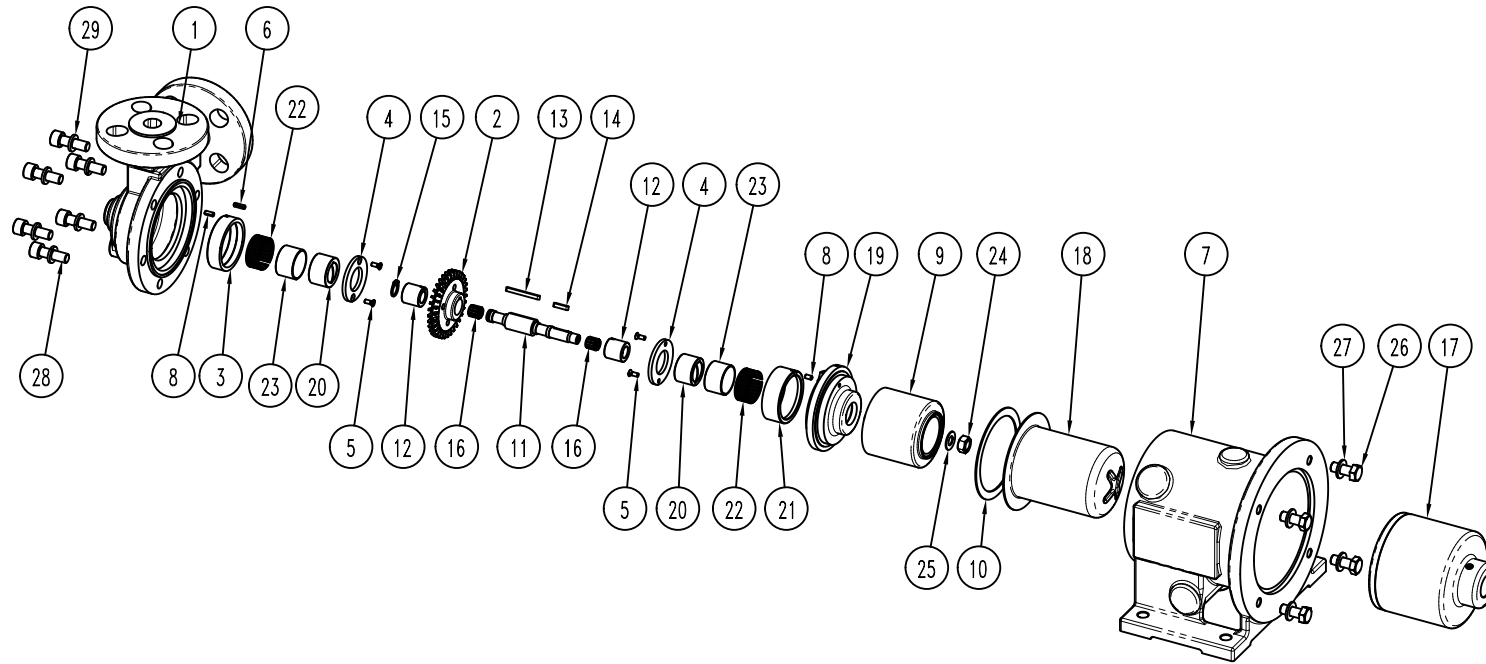
ITEM N°	CODE	Description	Material	Q.ty	ITEM N°	CODE	Description	Material	Q.ty
1	56210T0001AU	Pump Casing Univ. Flanged	CF8M	1	17	55810T000106N	External magnet	A105/NdFeB	1
2	55710T0001A	Impeller	AISI 316	1	18	55610A12508	Rear casing	AISI 316	1
3	93010T0001AA	Front Wear pad	Carbon Antimony	1	19	55120T0001A	Volute ring	AISI 316	1
4	90120T0001A	Lock ring wear pad	AISI 316	2	20	90310A2416	Bushing	Carbon Antimony	2
5	91610TSTC38A4	Screw UNI2009 M3x8	A2-70	4	21	93010T0001PA	Rear Wear pad	Carbon Antimony	1
6	93030D04L08A2	Elastic pin Ø4x8	A2-70	1	22	91710ARHV2812	Bushing Tolerance ring	AISI 316	2
7	56110T000106C	Bracket	WCB	1	23	902102616A	Sleeve bushing	AISI 316	2
8	93030D03L08A2	Elastic pin Ø3x8	A2-70	2	24	91620N08A2	Nut UNI5588 M8	A2-70	1
9	55820T0001NA	Internal magnet	AISI316/NdFeB	1	25	91630L0813A4	Washer NORD LOCK D.8x13.5	A4-70	1
10	91510A805665	Gasket	Asbestos free	1	26	91610TE820A2	Screw UNI24017 M8x20	A2-70	4
11	55010T0001A	Shaft	AISI 316	1	27	91630N0816A2	Washer UNI6592 D.8x16	A2-70	4
12	902201716S	Sleeve shaft	SiC	2	28	91610TCEI825A2	Screw UNI5931 M8x25	A2-70	6
13	91640A3332A4	Key UNI6604 3x3x32	A4-70	1	29	91630S0814A2	Washer UNI1751 D.8x14	A2-70	6
14	91640A3314A4	Key UNI6604 3x3x14	A4-70	1					
15	93040D10A4	Seeger UNI7435 A10	A4-70	1					
16	91710ARSV0810	Shaft Tolerance ring	AISI 316	2					

Motor: IEC 71 B5  
 Port connection: Flanged  
 ANSI (ASA) B16.5 150 lbs / EN 1092-1 PN.25

- This drawing is for reference only

# EXPLODED VIEW

CODE: E10089 Rev.:01



ITEM: Pump model: T MAG-M 1

# PART LIST

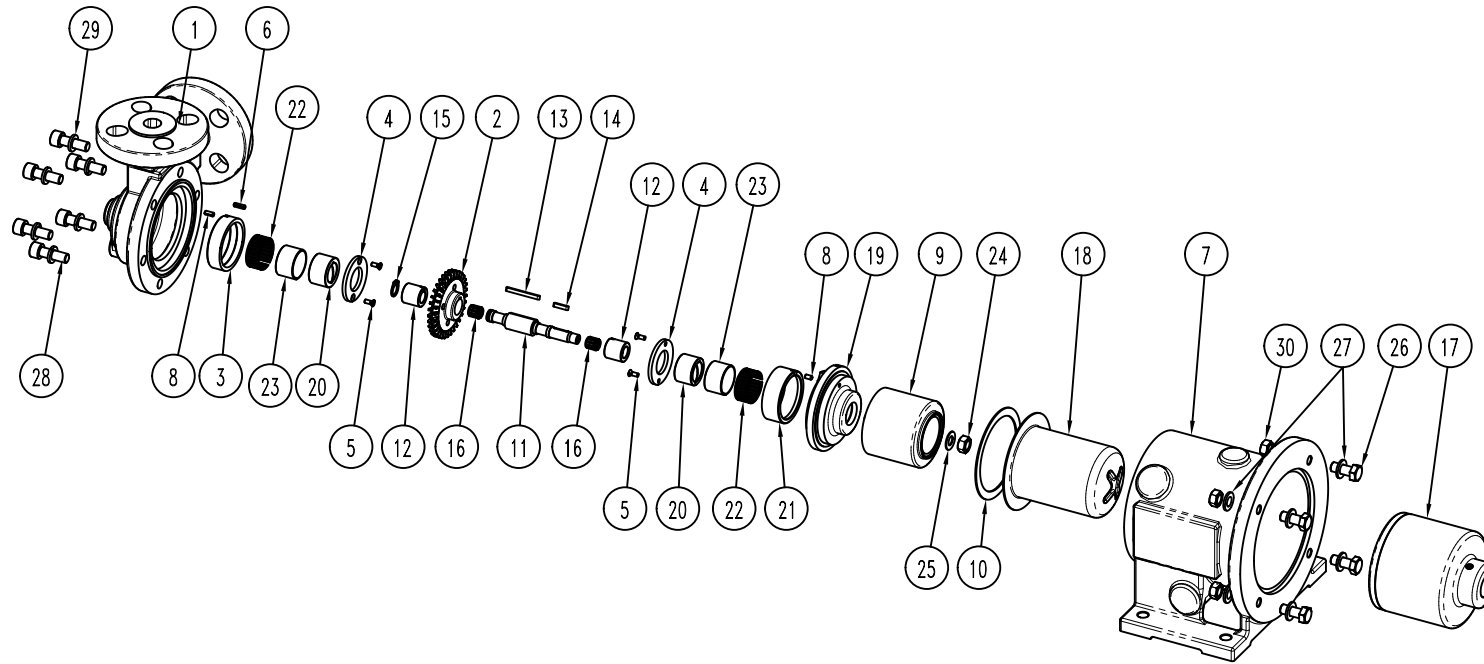
ITEM N°	CODE	Description	Material	Q.ty	ITEM N°	CODE	Description	Material	Q.ty
1	56210T0001AU	Pump Casing Univ. Flanged	CF8M	1	17	55810T000108N	External magnet	A105/NdFeB	1
2	55710T0001A	Impeller	AISI 316	1	18	55610A12508	Rear casing	AISI 316	1
3	93010T0001AA	Front Wear pad	Carbon Antimony	1	19	55120T0001A	Volute ring	AISI 316	1
4	90120T0001A	Lock ring wear pad	AISI 316	2	20	90310A2416	Bushing	Carbon Antimony	2
5	91610TSTC38A4	Screw UNI2009 M3x8	A2-70	4	21	93010T0001PA	Rear Wear pad	Carbon Antimony	1
6	93030D04L08A2	Elastic pin Ø4x8	A2-70	1	22	91710ARHV2812	Bushing Tolerance ring	AISI 316	2
7	56110T000108C	Bracket	WCB	1	23	902102616A	Sleeve bushing	AISI 316	2
8	93030D03L08A2	Elastic pin Ø3x8	A2-70	2	24	91620N08A2	Nut UNI5588 M8	A2-70	1
9	55820T0001NA	Internal magnet	AISI316/NdFeB	1	25	91630L0813A4	Washer NORD LOCK D.8x13.5	A4-70	1
10	91510A805665	Gasket	Asbestos free	1	26	91610TE820A2	Screw UNI24017 M8x20	A2-70	4
11	55010T0001A	Shaft	AISI 316	1	27	91630N0816A2	Washer UNI6592 D.8x16	A2-70	4
12	902201716S	Sleeve shaft	SiC	2	28	91610TCEI825A2	Screw UNI5931 M8x25	A2-70	6
13	91640A3332A4	Key UNI6604 3x3x32	A4-70	1	29	91630S0814A2	Washer UNI1751 D.8x14	A2-70	6
14	91640A3314A4	Key UNI6604 3x3x14	A4-70	1					
15	93040D10A4	Seeger UNI7435 A10	A4-70	1					
16	91710ARSV0810	Shaft Tolerance ring	AISI 316	2					

Motor: IEC 80 B5  
 Port connection: Flanged  
 ANSI (ASA) B16.5 150 lbs / EN 1092-1 PN.25

- This drawing is for reference only

# EXPLODED VIEW

CODE: E10079 Rev.:01



ITEM: Pump model: T MAG-M 2

# PART LIST

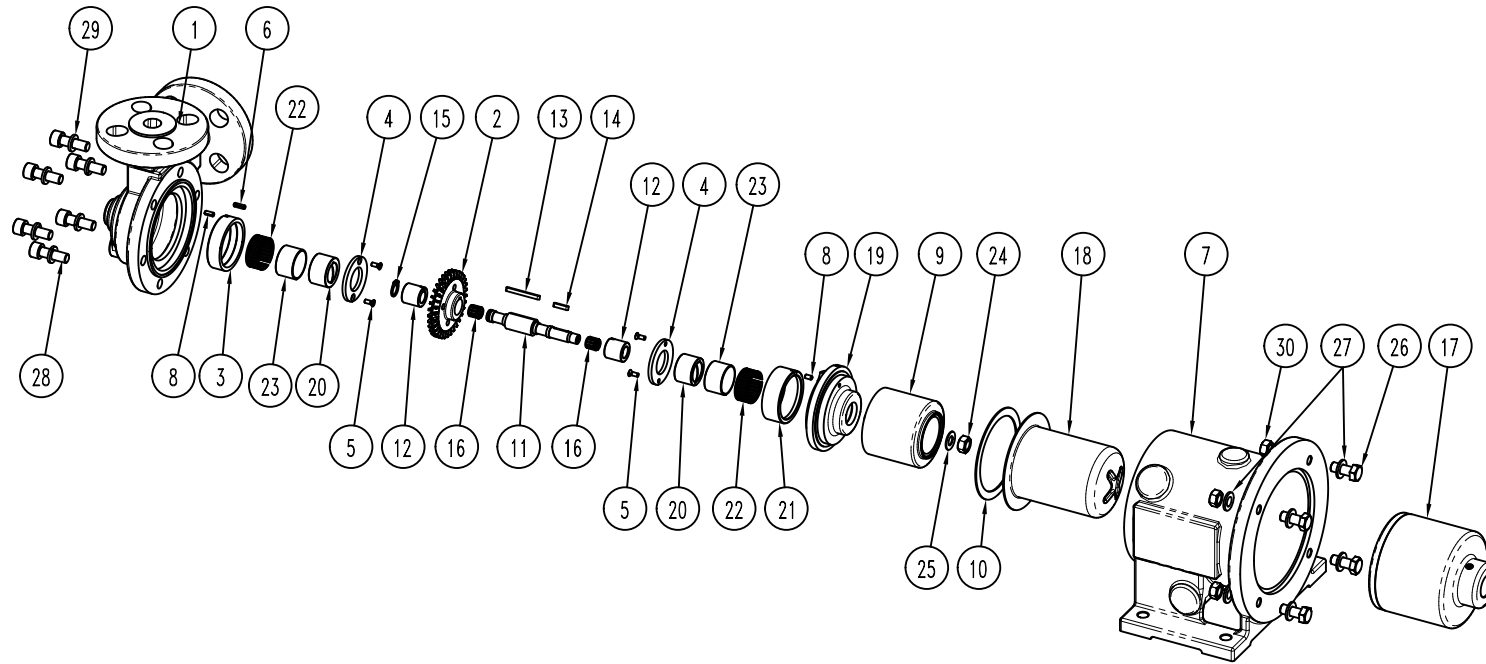
ITEM N°	CODE	Description	Material	Q.ty	ITEM N°	CODE	Description	Material	Q.ty
1	56210T0002AU	Pump Casing Univ. Flanged	CF8M	1	17	55810T000208N	External magnet	A105/NdFeB	1
2	55710T0002A	Impeller	AISI 316	1	18	55610A14008	Rear casing	AISI 316	1
3	93010T0002AA	Front Wear pad	Carbon Antimony	1	19	55120T0002A	Volute ring	AISI 316	1
4	90120T0002A	Lock ring wear pad	AISI 316	2	20	90310A2823	Bushing	Carbon Antimony	2
5	91610TSTC38A4	Screw UNI2009 M3x8	A2-70	4	21	93010T0002PA	Rear Wear pad	Carbon Antimony	1
6	93030D04L08A2	Elastic pin Ø4x8	A2-70	1	22	91710ARHV3214	Bushing Tolerance ring	AISI 316	2
7	56110T000208C	Bracket	WCB	1	23	902103023A	Sleeve bushing	AISI 316	2
8	93030D03L08A2	Elastic pin Ø3x8	A2-70	2	24	91620N10A2	Nut UNI5588 M10	A2-70	1
9	55820T0002NA	Internal magnet	AISI316/NdFeB	1	25	91630L1016A4	Washer NORD LOCK D.10x16.6	A4-70	1
10	91510A955805	Gasket	Asbestos free	1	26	91610TE835A2	Screw UNI24017 M8x35	A2-70	4
11	55010T0002A	Shaft	AISI 316	1	27	91630N0816A2	Washer UNI6592 D.8x16	A2-70	8
12	902202023S	Sleeve shaft	SiC	2	28	91610TCEI830A2	Screw UNI5931 M8x30	A2-70	6
13	51640A5536A4S	Key UNI6604 5x5x36	A4-70	1	29	91630S0814A2	Washer UNI1751 D.8x14	A2-70	6
14	91640A4414A4	Key UNI6604 4x4x14	A4-70	1	30	91620N08A2	Nut UNI5588 M8	A2-70	4
15	93040D12A4	Segar UNI7435 A12	A4-70	1					
16	91710ARSV0710	Shaft Tolerance ring	AISI 316	2					

Motor: IEC 80 B5  
 Port connection: Flanged  
 ANSI (ASA) B16.5 150 lbs / EN 1092-1 PN.25

- This drawing is for reference only

# EXPLODED VIEW

CODE: E10091 Rev.:01



ITEM: Pump model: T MAG-M 2

# PART LIST

ITEM N°	CODE	Description	Material	Q.ty	ITEM N°	CODE	Description	Material	Q.ty
1	56210T0002AU	Pump Casing Univ. Flanged	CF8M	1	17	55810T000210N	External magnet	A105/NdFeB	1
2	55710T0002A	Impeller	AISI 316	1	18	55610A14008	Rear casing	AISI 316	1
3	93010T0002AA	Front Wear pad	Carbon Antimony	1	19	55120T0002A	Volute ring	AISI 316	1
4	90120T0002A	Lock ring wear pad	AISI 316	2	20	90310A2823	Bushing	Carbon Antimony	2
5	91610TSTC38A4	Screw UNI2009 M3x8	A2-70	4	21	93010T0002PA	Rear Wear pad	Carbon Antimony	1
6	93030D04L08A2	Elastic pin Ø4x8	A2-70	1	22	91710ARHV3214	Bushing Tolerance ring	AISI 316	2
7	56110T000208C	Bracket	WCB	1	23	902103023A	Sleeve bushing	AISI 316	2
8	93030D03L08A2	Elastic pin Ø3x8	A2-70	2	24	91620N10A2	Nut UNI5588 M10	A2-70	1
9	55820T0002NA	Internal magnet	AISI316/NdFeB	1	25	91630L1016A4	Washer NORD LOCK D.10x16.6	A4-70	1
10	91510A955805	Gasket	Asbestos free	1	26	91610TE835A2	Screw UNI24017 M8x35	A2-70	4
11	55010T0002A	Shaft	AISI 316	1	27	91630N0816A2	Washer UNI6592 D.8x16	A2-70	8
12	902202023S	Sleeve shaft	SiC	2	28	91610TCEI830A2	Screw UNI5931 M8x30	A2-70	6
13	51640A5536A4S	Key UNI6604 5x5x36	A4-70	1	29	91630S0814A2	Washer UNI1751 D.8x14	A2-70	6
14	91640A4414A4	Key UNI6604 4x4x14	A4-70	1	30	91620N08A2	Nut UNI5588 M8	A2-70	4
15	93040D12A4	Segar UNI7435 A12	A4-70	1					
16	91710ARSV0710	Shaft Tolerance ring	AISI 316	2					

Motor: IEC 90 B5  
 Port connection: Flanged  
 ANSI (ASA) B16.5 150 lbs / EN 1092-1 PN.25

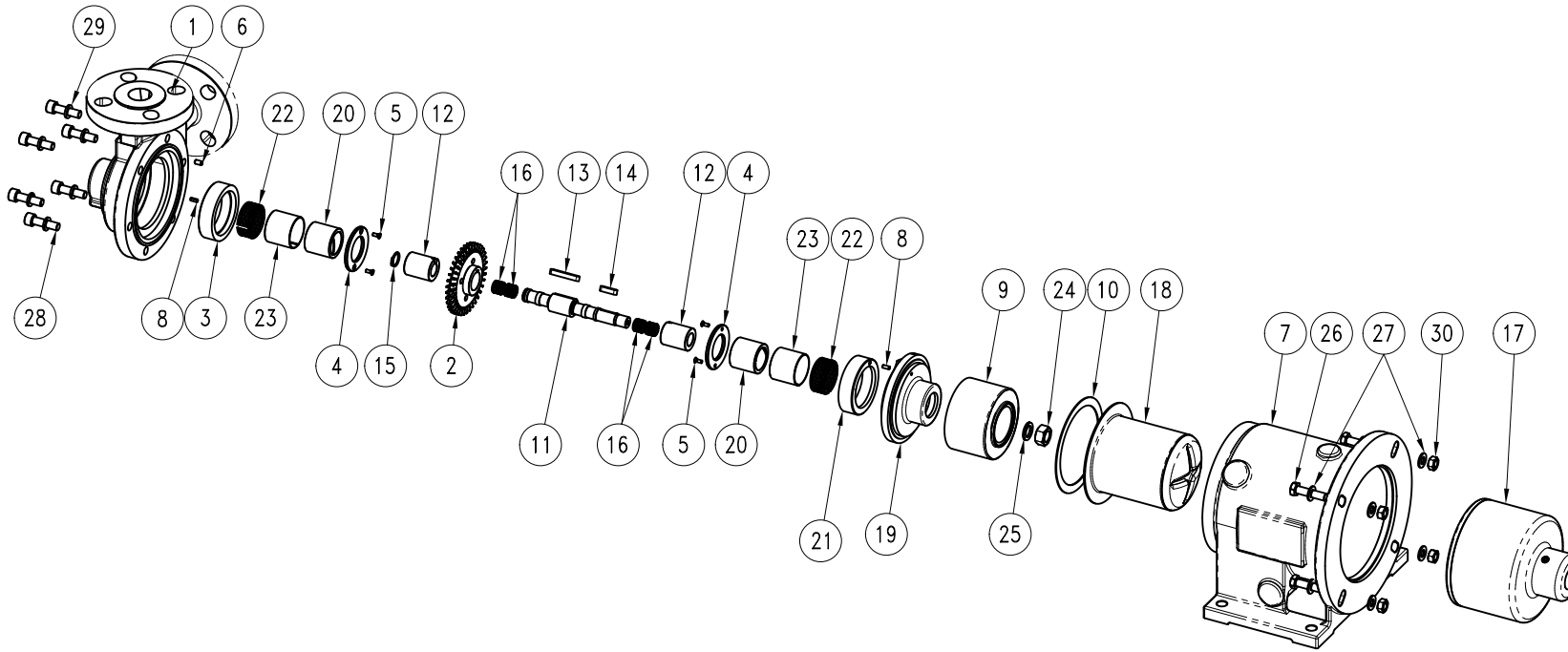
- This drawing is for reference only

# EXPLODED VIEW

CODE: E10081 Rev.:01



ITEM: Pump model: T MAG-M 3



# PART LIST

ITEM N°	CODE	Description	Material	Q.ty	ITEM N°	CODE	Description	Material	Q.ty
1	56210T0003AU	Pump Casing Univ. Flanged	CF8M	1	17	55810T000310N	External magnet	A105/NdFeB	1
2	55710T0003A	Impeller	AISI 316	1	18	55610A13013	Rear casing	AISI 316	1
3	93010T0003AA	Front Wear pad	Carbon Antimony	1	19	55120T0003A	Volute ring	AISI 316	1
4	90120T0003A	Lock ring wear pad	AISI 316	2	20	90310A3330	Bushing	Carbon Antimony	2
5	91610TSTC38A4	Screw UNI2009 M3x8	A2-70	4	21	93010T0003PA	Rear Wear pad	Carbon Antimony	1
6	93030D04L08A2	Elastic pin Ø4x8	A2-70	1	22	91710ARHV3714	Bushing Tolerance ring	AISI 316	2
7	56110T000310C	Bracket	WCB	1	23	902103528A	Sleeve bushing	AISI 316	2
8	93030D03L08A2	Elastic pin Ø3x8	A2-70	2	24	91620N12A2	Nut UNI5588 M12	A2-70	1
9	55820T0003NA	Internal magnet	AISI316/NdFeB	1	25	91630L1319A4	Washer NORD LOCK D.12x19.5	A4-70	1
10	91510A1065885	Gasket	Asbestos free	1	26	91610TE840A2	Screw UNI24017 M8x40	A2-70	4
11	55010T0003A	Shaft	AISI 316	1	27	91630N0816A2	Washer UNI6592 D.8x16	A2-70	8
12	902202530S	Sleeve shaft	SiC	2	28	91610TCEI830A2	Screw UNI5931 M8x30	A2-70	6
13	51640A5535A4	Key UNI6604 5x5x35	A4-70	1	29	91630S0814A2	Washer UNI1751 D.8x14	A2-70	6
14	91640A5520A4	Key UNI6604 5x5x20	A4-70	1	30	91620N08A2	Nut UNI5588 M8	A2-70	4
15	93040D14A4	Segar UNI7435 A14	A4-70	1					
16	91710ARSV1210	Shaft Tolerance ring	AISI 316	2					

Motor: IEC 90 B5  
 Port connection: Flanged  
 ANSI (ASA) B16.5 150 lbs / EN 1092-1 PN.25

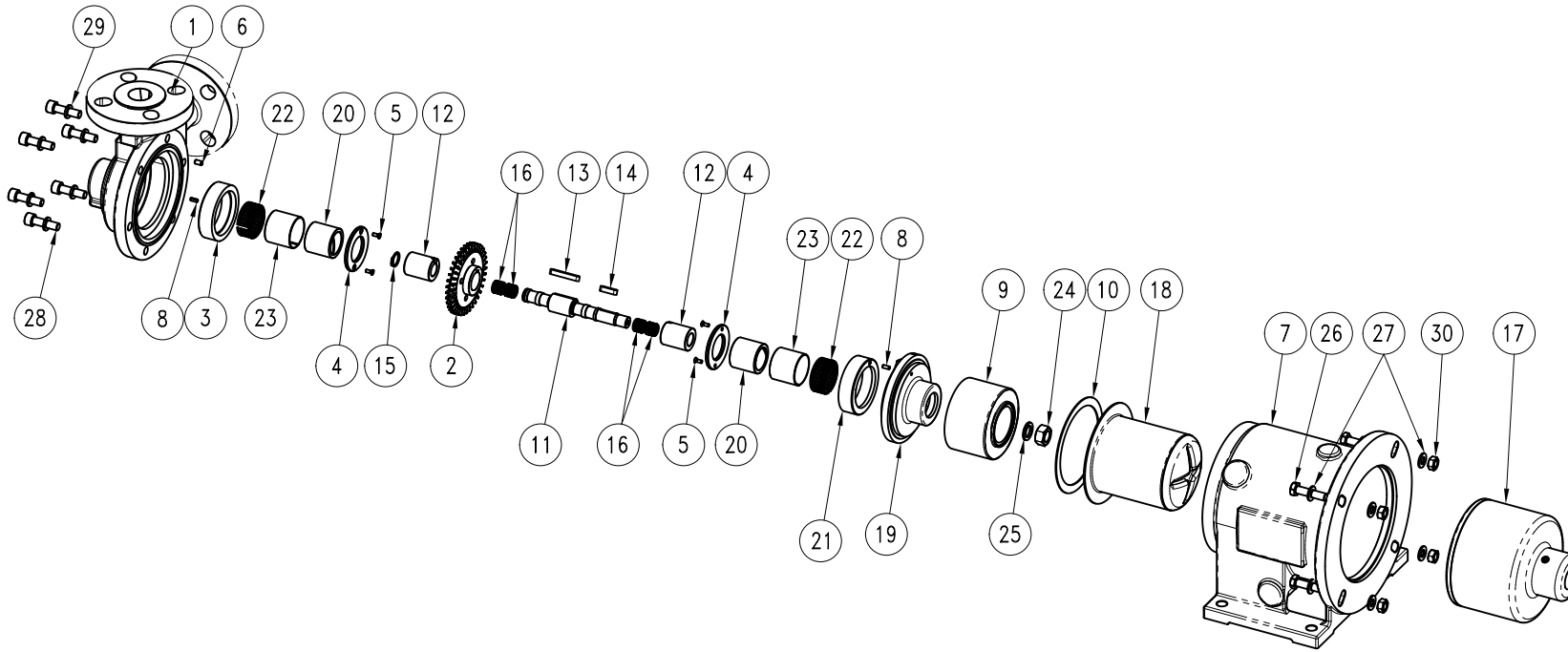
- This drawing is for reference only

# EXPLODED VIEW

CODE: E10093 Rev.:02



ITEM: Pump model: T MAG-M 3



# PART LIST

ITEM N°	CODE	Description	Material	Q.ty	ITEM N°	CODE	Description	Material	Q.ty
1	56210T0003AU	Pump Casing Univ. Flanged	CF8M	1	17	55810T000412N	External magnet	A105/NdFeB	1
2	55710T0003A	Impeller	AISI 316	1	18	55610A13013	Rear casing	AISI 316	1
3	93010T0003AA	Front Wear pad	Carbon Antimony	1	19	55120T0003A	Volute ring	AISI 316	1
4	90120T0003A	Lock ring wear pad	AISI 316	2	20	90310A3330	Bushing	Carbon Antimony	2
5	91610TSTC38A4	Screw UNI2009 M3x8	A2-70	4	21	93010T0003PA	Rear Wear pad	Carbon Antimony	1
6	93030D04L08A2	Elastic pin Ø4x8	A2-70	1	22	91710ARHV3714	Bushing Tolerance ring	AISI 316	2
7	56110T00031214C	Bracket	WCB	1	23	902103528A	Sleeve bushing	AISI 316	2
8	93030D03L08A2	Elastic pin Ø3x8	A2-70	2	24	91620N12A2	Nut UNI5588 M12	A2-70	1
9	55820T0003NA	Internal magnet	AISI316/NdFeB	1	25	91630L1319A4	Washer NORD LOCK D.12x19.5	A4-70	1
10	91510A1065885	Gasket	Asbestos free	1	26	91610TE840A2	Screw UNI24017 M8x40	A2-70	4
11	55010T0003A	Shaft	AISI 316	1	27	91630N0816A2	Washer UNI6592 D.8x16	A2-70	8
12	902202530S	Sleeve shaft	SiC	2	28	91610TCEI830A2	Screw UNI5931 M8x30	A2-70	6
13	51640A5535A4	Key UNI6604 5x5x35	A4-70	1	29	91630S0814A2	Washer UNI1751 D.8x14	A2-70	6
14	91640A5520A4	Key UNI6604 5x5x20	A4-70	1	30	91620N08A2	Nut UNI5588 M8	A2-70	4
15	93040D14A4	Segar UNI7435 A14	A4-70	1					
16	91710ARSV1210	Shaft Tolerance ring	AISI 316	2					

Motor: IEC 100/112 B5  
 Port connection: Flanged  
 ANSI (ASA) B16.5 150 lbs / EN 1092-1 PN.25

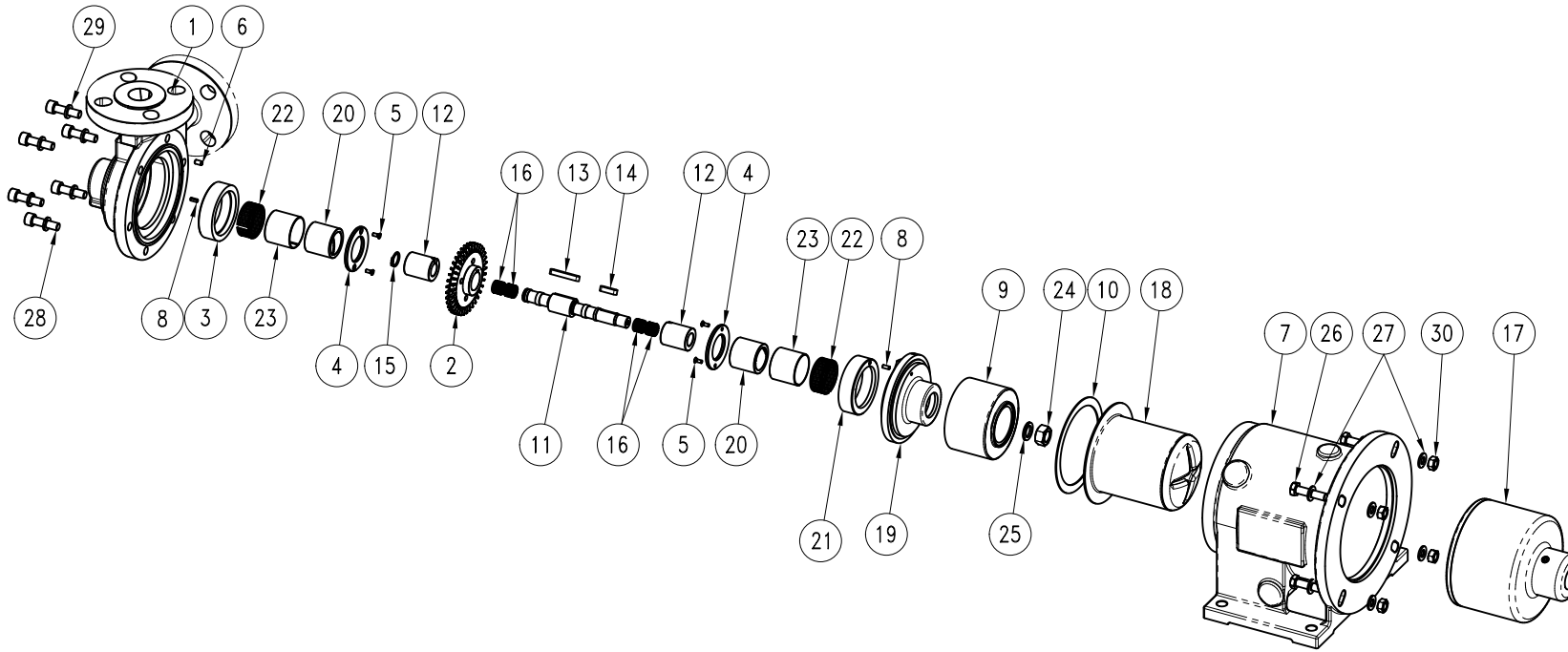
- This drawing is for reference only

# EXPLODED VIEW

CODE: E10083 Rev.:02



ITEM: Pump model: T MAG-M 4



# PART LIST

ITEM N°	CODE	Description	Material	Q.ty	ITEM N°	CODE	Description	Material	Q.ty
1	56210T0004AU	Pump Casing Univ. Flanged	CF8M	1	17	55810T000310N	External magnet	A105/NdFeB	1
2	55710T0004A	Impeller	AISI 316	1	18	55610A13013	Rear casing	AISI 316	1
3	93010T0003AA	Front Wear pad	Carbon Antimony	1	19	55120T0004A	Volute ring	AISI 316	1
4	90120T0003A	Lock ring wear pad	AISI 316	2	20	90310A3330	Bushing	Carbon Antimony	2
5	91610TSTC38A4	Screw UNI2009 M3x8	A2-70	4	21	93010T0003PA	Rear Wear pad	Carbon Antimony	1
6	93030D04L08A2	Elastic pin Ø4x8	A2-70	1	22	91710ARHV3714	Bushing Tolerance ring	AISI 316	2
7	56110T000310C	Bracket	WCB	1	23	902103528A	Sleeve bushing	AISI 316	2
8	93030D03L08A2	Elastic pin Ø3x8	A2-70	2	24	91620N12A2	Nut UNI5588 M12	A2-70	1
9	55820T0003NA	Internal magnet	AISI316/NdFeB	1	25	91630L1319A4	Washer NORD LOCK D.12x19.5	A4-70	1
10	91510A1065885	Gasket	Asbestos free	1	26	91610TE840A2	Screw UNI24017 M8x40	A2-70	4
11	55010T0003A	Shaft	AISI 316	1	27	91630N0816A2	Washer UNI6592 D.8x16	A2-70	8
12	902202530S	Sleeve shaft	SiC	2	28	91610TCEI830A2	Screw UNI5931 M8x30	A2-70	6
13	51640A5535A4	Key UNI6604 5x5x35	A4-70	1	29	91630S0814A2	Washer UNI1751 D.8x14	A2-70	6
14	91640A5520A4	Key UNI6604 5x5x20	A4-70	1	30	91620N08A2	Nut UNI5588 M8	A2-70	4
15	93040D14A4	Segar UNI7435 A14	A4-70	1					
16	91710ARSV1210	Shaft Tolerance ring	AISI 316	2					

Motor: IEC 90 B5  
 Port connection: Flanged  
 ANSI (ASA) B16.5 150 lbs / EN 1092-1 PN.25

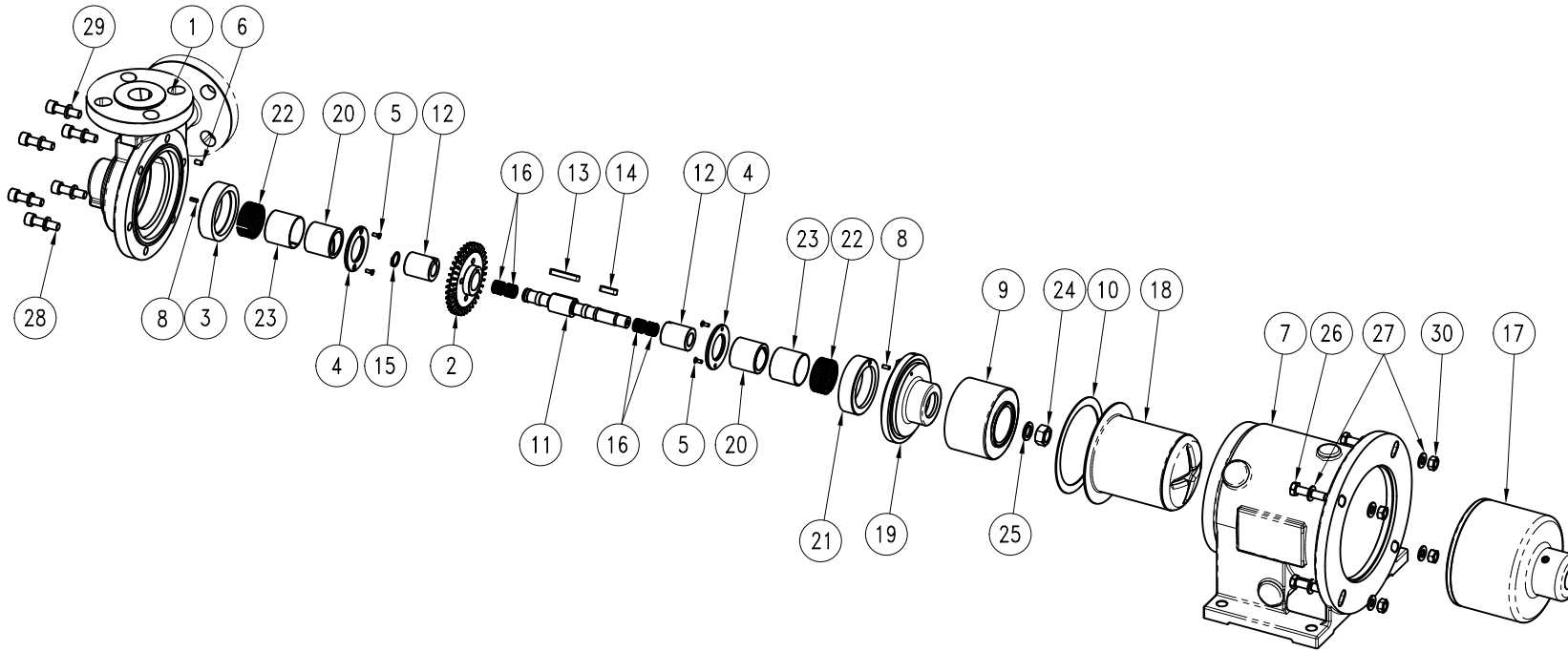
- This drawing is for reference only

# EXPLODED VIEW

CODE: E10095 Rev.:02



ITEM: Pump model: T MAG-M 4



# PART LIST

ITEM N°	CODE	Description	Material	Q.ty	ITEM N°	CODE	Description	Material	Q.ty
1	56210T0004AU	Pump Casing Univ. Flanged	CF8M	1	17	55810T000412N	External magnet	A105/NdFeB	1
2	55710T0004A	Impeller	AISI 316	1	18	55610A13013	Rear casing	AISI 316	1
3	93010T0003AA	Front Wear pad	Carbon Antimony	1	19	55120T0004A	Volute ring	AISI 316	1
4	90120T0003A	Lock ring wear pad	AISI 316	2	20	90310A3330	Bushing	Carbon Antimony	2
5	91610TSTC38A4	Screw UNI2009 M3x8	A2-70	4	21	93010T0003PA	Rear Wear pad	Carbon Antimony	1
6	93030D04L08A2	Elastic pin Ø4x8	A2-70	1	22	91710ARHV3714	Bushing Tolerance ring	AISI 316	2
7	56110T00031214C	Bracket	WCB	1	23	902103528A	Sleeve bushing	AISI 316	2
8	93030D03L08A2	Elastic pin Ø3x8	A2-70	2	24	91620N12A2	Nut UNI5588 M12	A2-70	1
9	55820T0003NA	Internal magnet	AISI316/NdFeB	1	25	91630L1319A4	Washer NORD LOCK D.12x19.5	A4-70	1
10	91510A1065885	Gasket	Asbestos free	1	26	91610TE840A2	Screw UNI24017 M8x40	A2-70	4
11	55010T0003A	Shaft	AISI 316	1	27	91630N0816A2	Washer UNI6592 D.8x16	A2-70	8
12	902202530S	Sleeve shaft	SiC	2	28	91610TCEI830A2	Screw UNI5931 M8x30	A2-70	6
13	51640A5535A4	Key UNI6604 5x5x35	A4-70	1	29	91630S0814A2	Washer UNI1751 D.8x14	A2-70	6
14	91640A5520A4	Key UNI6604 5x5x20	A4-70	1	30	91620N08A2	Nut UNI5588 M8	A2-70	4
15	93040D14A4	Segar UNI7435 A14	A4-70	1					
16	91710ARSV1210	Shaft Tolerance ring	AISI 316	2					

Motor: IEC 100/112 B5  
 Port connection: Flanged  
 ANSI (ASA) B16.5 150 lbs / EN 1092-1 PN.25

- This drawing is for reference only

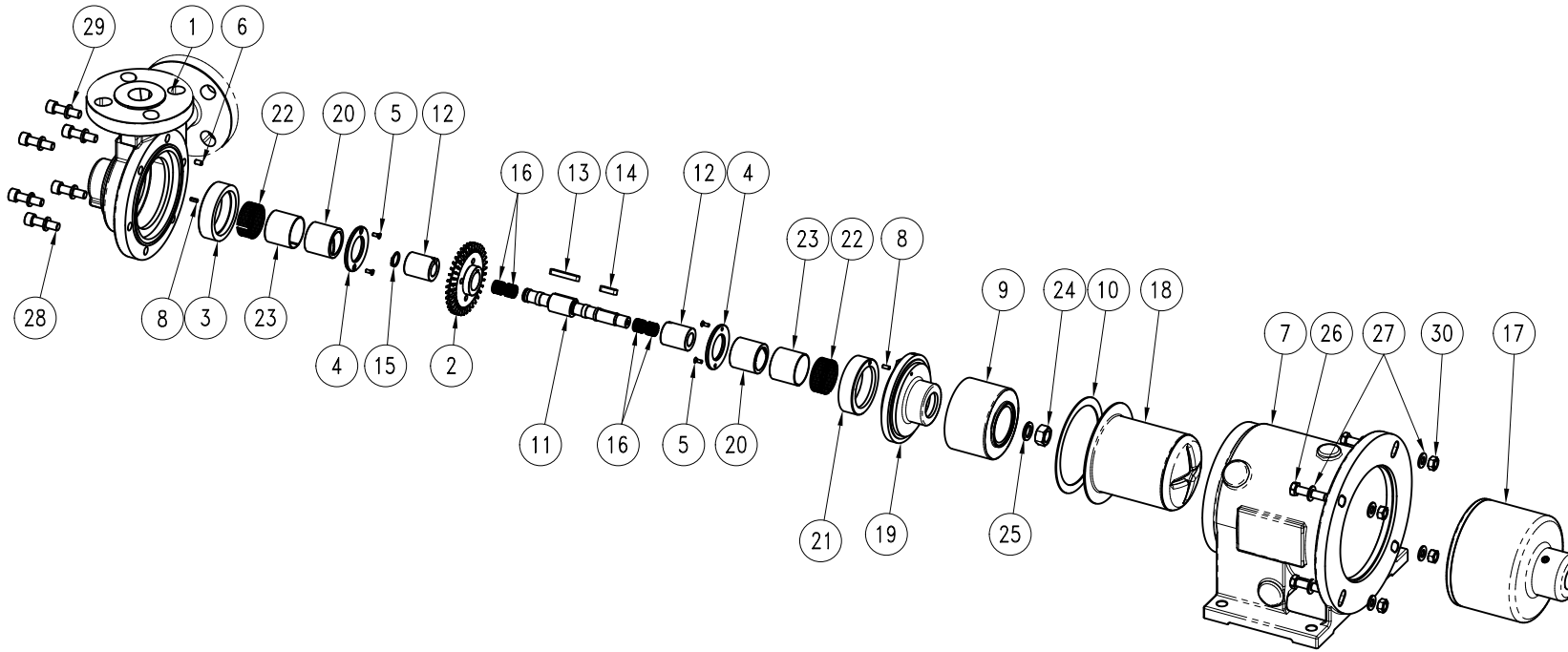


# EXPLODED VIEW

CODE: E10085 Rev.:02



ITEM: Pump model: T MAG-M 5



# PART LIST

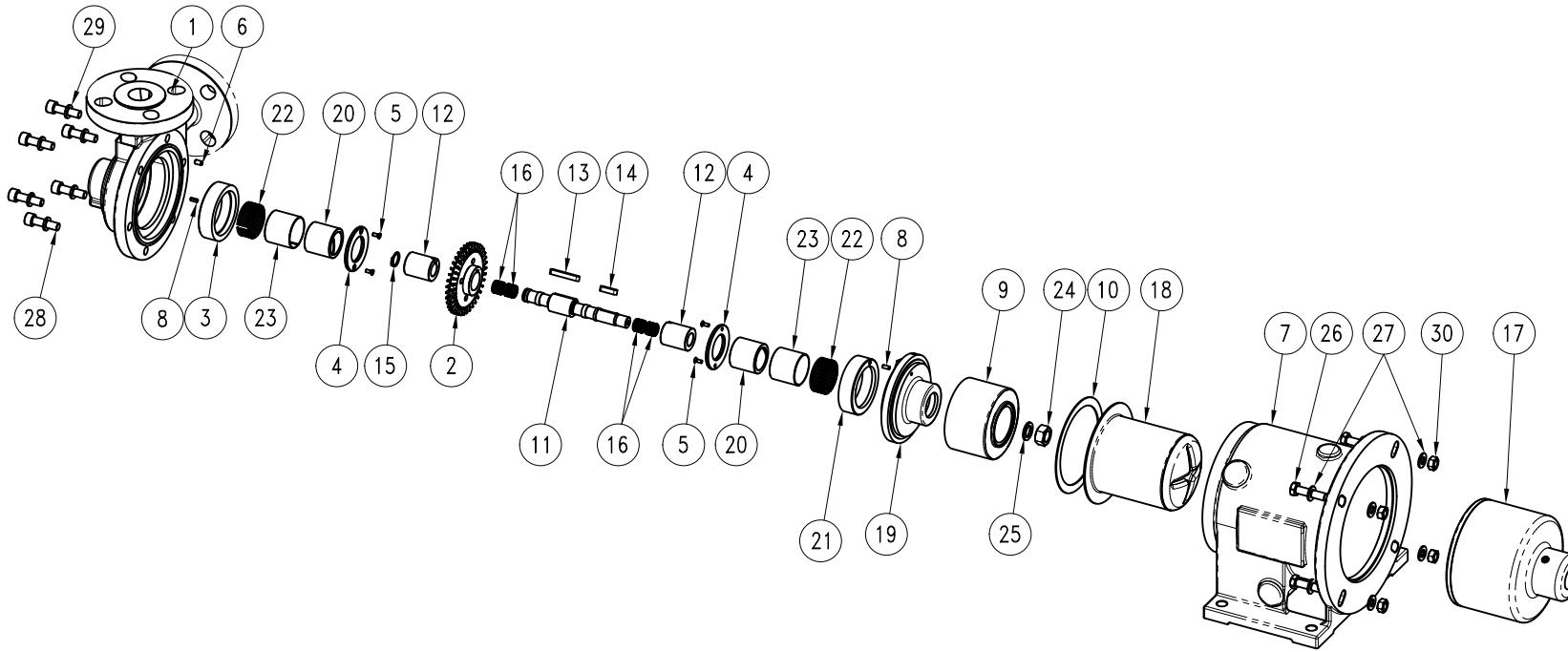
Motor: IEC 100-112 B5  
 Port connection: Flanged  
 ANSI (ASA) B16.5 150 lbs / EN 1092-1 PN.25

ITEM N°	CODE	Description	Material	Q.ty	ITEM N°	CODE	Description	Material	Q.ty
1	56210T0005AU	Pump Casing Univ. Flanged	CF8M	1	17	55810T000512N	External magnet	A105/NdFeB	1
2	55710T0005A	Impeller	AISI 316	1	18	55610A16508	Rear casing	AISI 316	1
3	93010T0005AA	Front Wear pad	Carbon Antimony	1	19	55120T0005A	Volute ring	AISI 316	1
4	90120T0005A	Lock ring wear pad	AISI 316	2	20	90310A3835	Bushing	Carbon Antimony	2
5	91610TSTC38A4	Screw UNI2009 M3x8	A2-70	4	21	93010T0005PA	Rear Wear pad	Carbon Antimony	1
6	93030D04L08A2	Elastic pin Ø4x8	A2-70	1	22	91710ARHV4220	Bushing Tolerance ring	AISI 316	2
7	56110T00051214C	Bracket	WCB	1	23	902104033A	Sleeve bushing	AISI 316	2
8	93030D03L08A2	Elastic pin Ø3x8	A2-70	2	24	91620N12A2	Nut UNI5588 M12	A2-70	1
9	55820T0005NA	Internal magnet	AISI316/NdFeB	1	25	91630L1319A4	Washer NORD LOCK D.12x19.5	A4-70	1
10	91510A11951045	Gasket	Asbestos free	1	26	91610TE1045A2	Screw UNI24017 M10x45	A2-70	4
11	55010T0005A	Shaft	AISI 316	1	27	91630N1020A2	Washer UNI6592 D.10x20	A2-70	8
12	902202835S	Sleeve shaft	SiC	2	28	91610TCE11035A2	Screw UNI5931 M10x35	A2-70	6
13	51640A6640A4S	Key UNI6604 6x6x42.5	A4-70	1	29	91630S1017A2	Washer UNI1751 D.10x17	A2-70	6
14	91640A6632A4	Key UNI6604 6x6x32	A4-70	1	30	91620N10A2	Nut UNI5588 M10	A2-70	4
15	93040D18A4	Seeger UNI7435 A18	A4-70	1					
16	91710ARSV1610	Shaft Tolerance ring	AISI 316	2					

- This drawing is for reference only

# EXPLODED VIEW

CODE: E10097 Rev.:02



ITEM: Pump model: T MAG-M 5

# PART LIST

ITEM N°	CODE	Description	Material	Q.ty	ITEM N°	CODE	Description	Material	Q.ty
1	56210T0005AU	Pump Casing Univ. Flanged	CF8M	1	17	55810T000516N	External magnet	A105/NdFeB	1
2	55710T0005A	Impeller	AISI 316	1	18	55610A16508	Rear casing	AISI 316	1
3	93010T0005AA	Front Wear pad	Carbon Antimony	1	19	55120T0005A	Volute ring	AISI 316	1
4	90120T0005A	Lock ring wear pad	AISI 316	2	20	90310A3835	Bushing	Carbon Antimony	2
5	91610TSTC38A4	Screw UNI2009 M3x8	A2-70	4	21	93010T0005PA	Rear Wear pad	Carbon Antimony	1
6	93030D04L08A2	Elastic pin Ø4x8	A2-70	1	22	91710ARHV4220	Bushing Tolerance ring	AISI 316	2
7	56110T000616C	Bracket	WCB	1	23	902104033A	Sleeve bushing	AISI 316	2
8	93030D03L08A2	Elastic pin Ø3x8	A2-70	2	24	91620N12A2	Nut UNI5588 M12	A2-70	1
9	55820T0005NA	Internal magnet	AISI316/NdFeB	1	25	91630L1319A4	Washer NORD LOCK D.12x19.5	A4-70	1
10	91510A11951045	Gasket	Asbestos free	1	26	91610TE1045A2	Screw UNI24017 M10x45	A2-70	4
11	55010T0005A	Shaft	AISI 316	1	27	91630N1020A2	Washer UNI6592 D.10x20	A2-70	8
12	902202835S	Sleeve shaft	SiC	2	28	91610TCE11035A2	Screw UNI5931 M10x35	A2-70	6
13	51640A6640A4S	Key UNI6604 6x6x42.5	A4-70	1	29	91630S1017A2	Washer UNI1751 D.10x17	A2-70	6
14	91640A6632A4	Key UNI6604 6x6x32	A4-70	1	30	91620N10A2	Nut UNI5588 M10	A2-70	4
15	93040D18A4	Seger UNI7435 A18	A4-70	1					
16	91710ARSV1610	Shaft Tolerance ring	AISI 316	2					

Motor: IEC 132 B5  
 Port connection: Flanged  
 ANSI (ASA) B16.5 150 lbs / EN 1092-1 PN.25

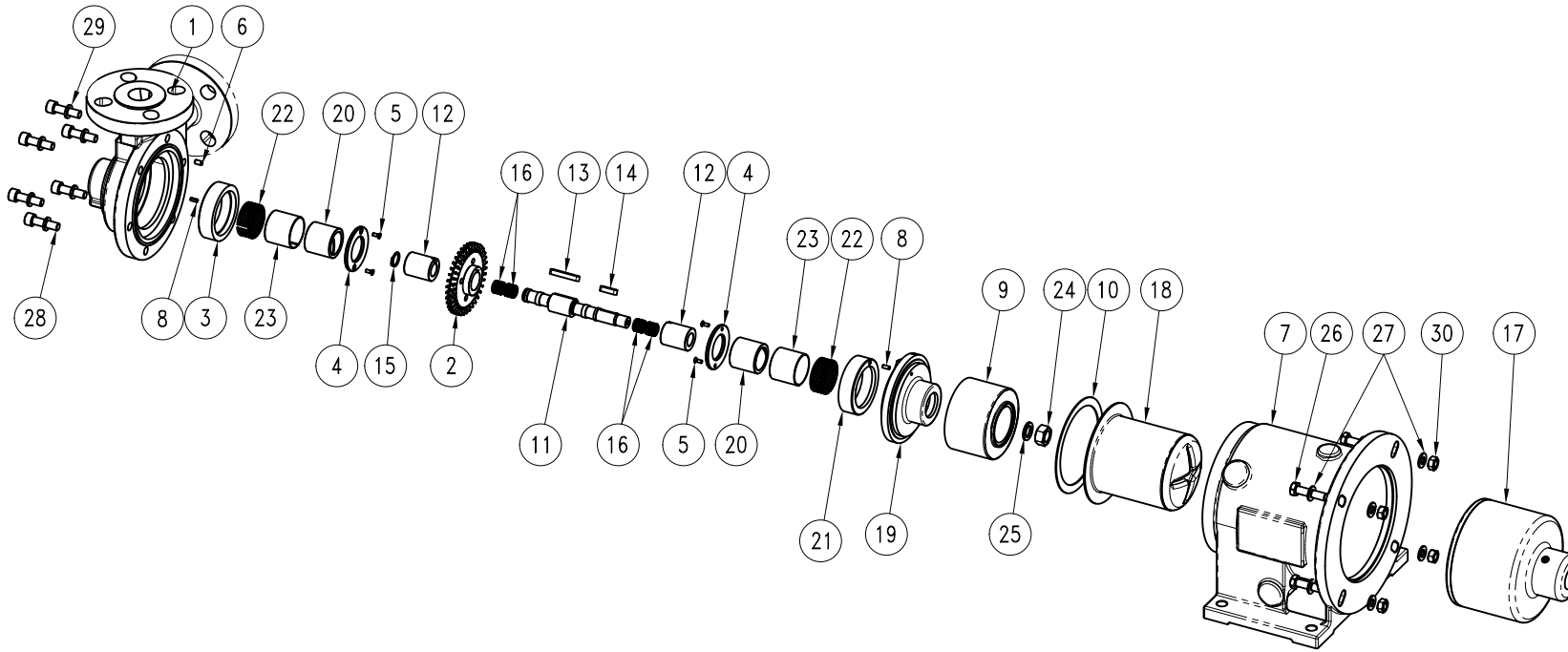
- This drawing is for reference only

# EXPLODED VIEW

CODE: E10087 Rev.:02



ITEM: Pump model: T MAG-M 6



# PART LIST

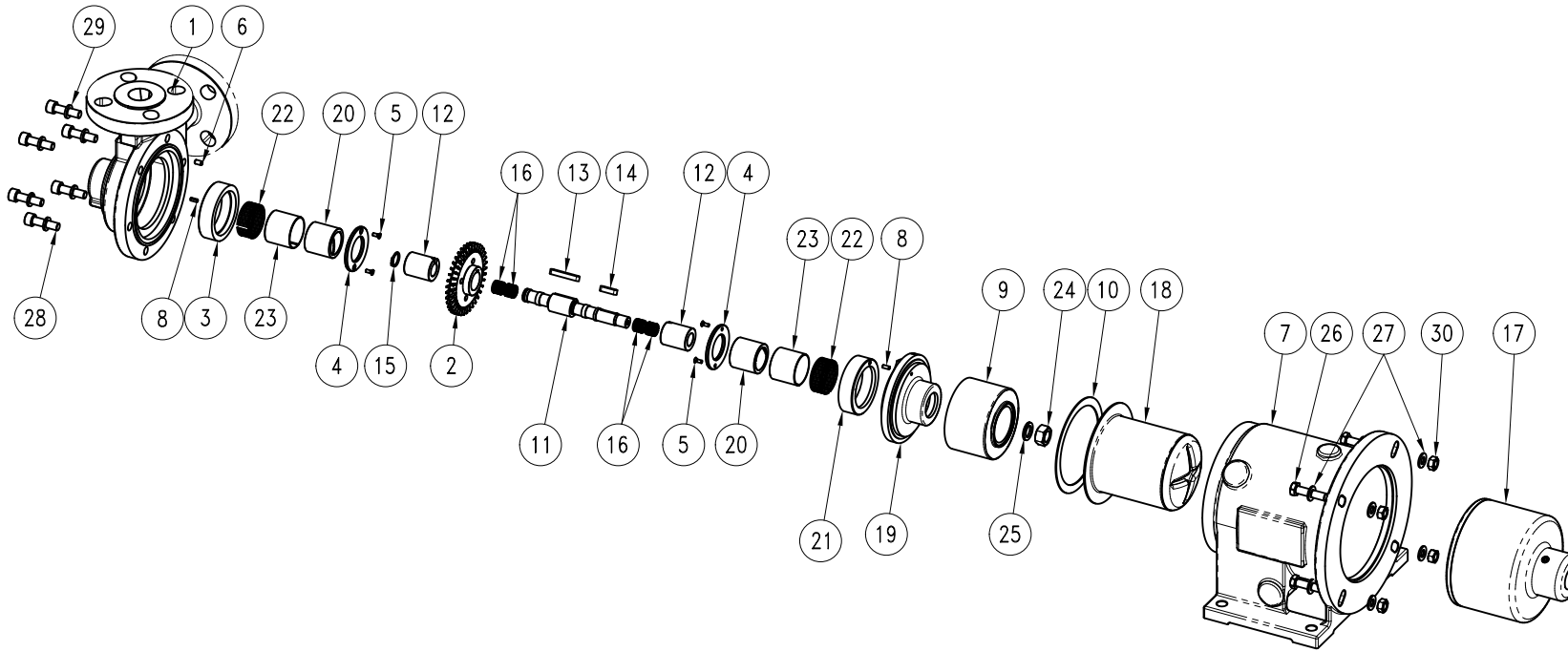
ITEM N°	CODE	Description	Material	Q.ty	ITEM N°	CODE	Description	Material	Q.ty
1	56210T0006AU	Pump Casing Univ. Flanged	CF8M	1	17	55810T000512N	External magnet	A105/NdFeB	1
2	55710T0006A	Impeller	AISI 316	1	18	55610A16508	Rear casing	AISI 316	1
3	93010T0005AA	Front Wear pad	Carbon Antimony	1	19	55120T0006A	Volute ring	AISI 316	1
4	90120T0005A	Lock ring wear pad	AISI 316	2	20	90310A3835	Bushing	Carbon Antimony	2
5	91610TSTC38A4	Screw UNI2009 M3x8	A2-70	4	21	93010T0005PA	Rear Wear pad	Carbon Antimony	1
6	93030D04L08A2	Elastic pin Ø4x8	A2-70	1	22	91710ARHV4220	Bushing Tolerance ring	AISI 316	2
7	56110T00051214C	Bracket	WCB	1	23	902104033A	Sleeve bushing	AISI 316	2
8	93030D03L08A2	Elastic pin Ø3x8	A2-70	2	24	91620N12A2	Nut UNI5588 M12	A2-70	1
9	55820T0005NA	Internal magnet	AISI316/NdFeB	1	25	91630L1319A4	Washer NORD LOCK D.12x19.5	A4-70	1
10	91510A11951045	Gasket	Asbestos free	1	26	91610TE1045A2	Screw UNI24017 M10x45	A2-70	4
11	55010T0006A	Shaft	AISI 316	1	27	91630N1020A2	Washer UNI6592 D.10x20	A2-70	8
12	902202835S	Sleeve shaft	SiC	2	28	91610TCE11035A2	Screw UNI5931 M10x35	A2-70	6
13	51640A6645A4S	Key UNI6604 6x6x45	A4-70	1	29	91630S1017A2	Washer UNI1751 D.10x17	A2-70	6
14	91640A6632A4	Key UNI6604 6x6x32	A4-70	1	30	91620N10A2	Nut UNI5588 M10	A2-70	4
15	93040D18A4	Seger UNI7435 A18	A4-70	1					
16	91710ARSV1610	Shaft Tolerance ring	AISI 316	2					

Motor: IEC 100-112 B5  
 Port connection: Flanged  
 ANSI (ASA) B16.5 150 lbs / EN 1092-1 PN.25

- This drawing is for reference only

# EXPLODED VIEW

CODE: E10099 Rev.:02



ITEM: Pump model: T MAG-M 6

# PART LIST

ITEM N°	CODE	Description	Material	Q.ty	ITEM N°	CODE	Description	Material	Q.ty
1	56210T0006AU	Pump Casing Univ. Flanged	CF8M	1	17	55810T000516N	External magnet	A105/NdFeB	1
2	55710T0006A	Impeller	AISI 316	1	18	55610A16508	Rear casing	AISI 316	1
3	93010T0005AA	Front Wear pad	Carbon Antimony	1	19	55120T0006A	Volute ring	AISI 316	1
4	90120T0005A	Lock ring wear pad	AISI 316	2	20	90310A3835	Bushing	Carbon Antimony	2
5	91610TSTC38A4	Screw UNI2009 M3x8	A2-70	4	21	93010T0005PA	Rear Wear pad	Carbon Antimony	1
6	93030D04L08A2	Elastic pin Ø4x8	A2-70	1	22	91710ARHV4220	Bushing Tolerance ring	AISI 316	2
7	56110T000616C	Bracket	WCB	1	23	902104033A	Sleeve bushing	AISI 316	2
8	93030D03L08A2	Elastic pin Ø3x8	A2-70	2	24	91620N12A2	Nut UNI5588 M12	A2-70	1
9	55820T0005NA	Internal magnet	AISI316/NdFeB	1	25	91630L1319A4	Washer NORD LOCK D.12x19.5	A4-70	1
10	91510A11951045	Gasket	Asbestos free	1	26	91610TE1045A2	Screw UNI24017 M10x45	A2-70	4
11	55010T0006A	Shaft	AISI 316	1	27	91630N1020A2	Washer UNI6592 D.10x20	A2-70	8
12	902202835S	Sleeve shaft	SiC	2	28	91610TCE11035A2	Screw UNI5931 M10x35	A2-70	6
13	51640A6645A4S	Key UNI6604 6x6x45	A4-70	1	29	91630S1017A2	Washer UNI1751 D.10x17	A2-70	6
14	91640A6632A4	Key UNI6604 6x6x32	A4-70	1	30	91620N10A2	Nut UNI5588 M10	A2-70	4
15	93040D18A4	Segar UNI7435 A18	A4-70	1					
16	91710ARSV1610	Shaft Tolerance ring	AISI 316	2					

Motor: IEC 132 B5  
 Port connection: Flanged  
 ANSI (ASA) B16.5 150 lbs / EN 1092-1 PN.25

- This drawing is for reference only